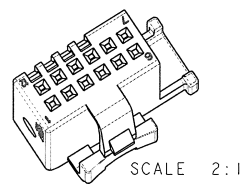
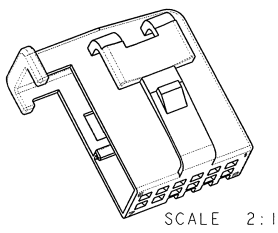
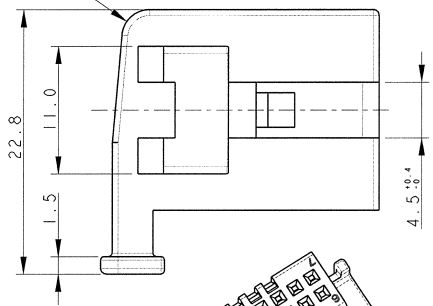
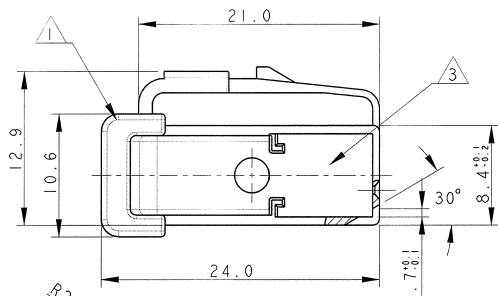
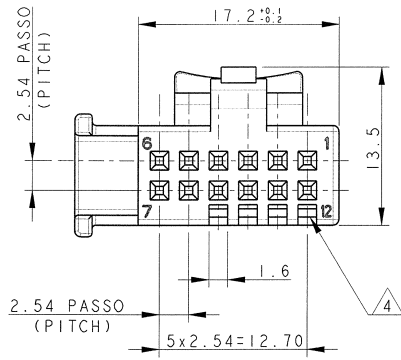


THIS DRAWING IS UNPUBLISHED
 QUESTO DISEGNO NON DEVE ESSERE DIVULGATO O RIPRODOTTO
 RELEASED FOR PUBLICATION
 E' CONSENTITA LA DIVULGAZIONE
 COPYRIGHT 20 BY TYCO ELECTRONICS CORPORATION. ALL RIGHTS RESERVED
 TUTTI I DIRITTI SONO RISERVATI

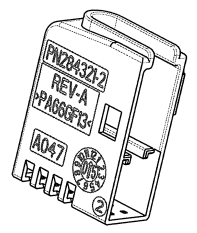
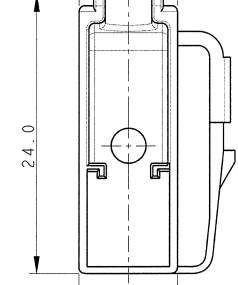
P	LTR	REV	DESCRIPTION	DATE	DATE	APP'D
0			PRELIMINARY ISSUE	15DIC98		G.S. O.C.
1			MODIFIED WIRES EXIT	20MAY99		G.S. O.C.
A			PRIMA EMIS. (FIRST ISSUE ET00-404-99)	13/10/00		G.S. O.C.
A1			RELEASED FOR PRODUCTION ET00-0121-00	08MAY2000		M.S. O.C.
A2			ADDED P/N 284321-2 (WAS 05-51169-1) ECR-016191	20JUL2006		F. Bruni



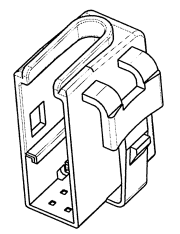
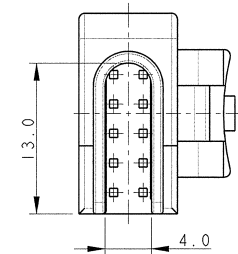
- 1 MATERIALE CORAZZA: PA.66-G.F.CARICATO VETRO COLORE NERO
(FRAME MATERIAL: PA6.6-GF. COLOUR BLACK)
- 2) CORAZZA ADATTA PER DIMA P/N. 98-51275
(FRAME SUITABLE FOR HEADER P/N. 98-51275)
- 3) CAVITA' ADATTA PER MODULO 12 POS. MOS. CRIMP P/N 284322-1
(CAVITY SUITABLE FOR HOUSING 12 POS. MOS CRIMP P/N 284322-1)
- 4) ZONE FLESSIONE MOLLE DI CORTO CIRCUITO VEDI DIS. CONTROPARTE 98-51275
(SHORTING SPRINGS AREAS SEE COUNTERPART DRAWING 98-51275)

P/N 284321-1 COME MOSTRATO (AS SHOWN)

7.8 MIN. PER DEFORMAZIONE (MIN. DUE TO WARPAGE)



SCALE 2:1



SCALE 2:1

P/N 284321-2 COME MOSTRATO (AS SHOWN)
 PER NOTE E DIMENSIONI MANCANTI VEDERE P/N 284321-1 (FOR MISSING NOTES AND DIMENSIONS SEE P/N 284321-1)

DIMENSIONS: DIMENSIONI: mm 		TOLERANCES UNLESS OTHERWISE SPECIFIED: TOLLERANZE SE NON DIVERSAMENTE SPECIFICATO 0 PLC/DEC ±0.3 1 PLC/DEC ±0.3 2 PLC/DEC ±0.3 3 PLC/DEC ± 4 PLC/DEC ± ANGLES/ANGOLI °		DWG/DIS. 15DEC98 G. STELLA CHK/CONT. 15DEC98 Q. SANUTO APVD/APP. 15DEC98 A. BRUNI PRODUCT SPEC SPEC DI PRODOTTO APPLICATION SPEC SPEC DI APPLICAZIONE WEIGHT PESO CUSTOMER DRAWING		Tyco Electronics Tyco Electronics AMP Italy C.so F.lli Cervi 15, Collegno (To)	
MATERIALI MATERIALE 		FINISH FINITURA 		NAME FRAME 12 POS. 2.54 mm PITCH		SIZE CAGE CODE DRAWING NO. NUMERO A3 00779 C=284321	
RESTRICTED TO		SCALE SCALA: 3:1		SHEET FOGLIO 1 OF DI 1		REV A2	