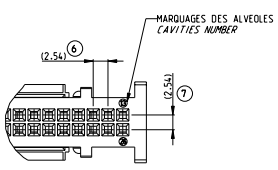
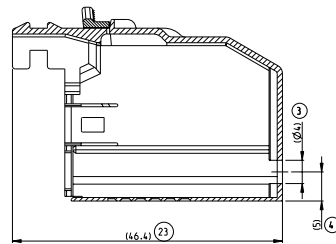
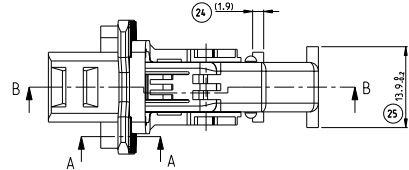
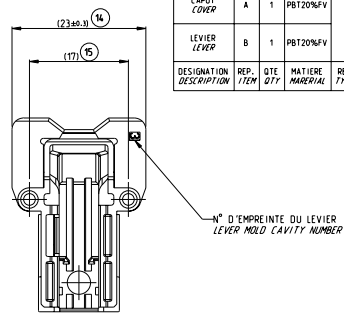
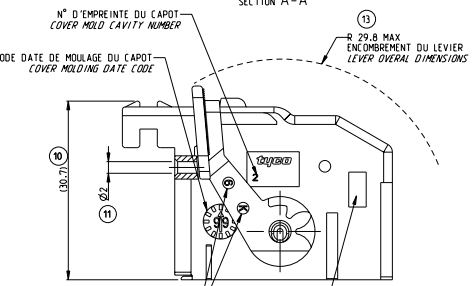
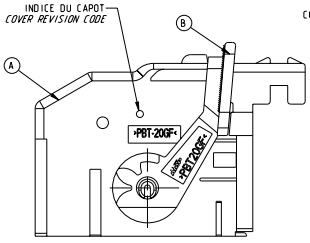


REVISONS		DATE	PREP	APP
B	UPDATE DOT VIEW	04/02/2009	P.B	P.P
C	UPDATE DRAWING	10/02/2009	NS	KR

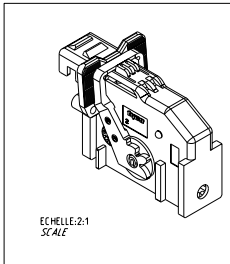
SECTION B-B



SECTION A-A



DESIGNATION DESCRIPTION	REP. ITEM	QTE	MATIERE MATERIAL	REFERENCE TYCO ELECTRONICS TYCO ELECTRONICS PART NUMBER	COULEUR COLOR	DETROMPAGE PERASYSATION
CAPOT COVER	A	1	PBT20%FV	195879-4	VERT GREEN (27) 13.8	
LEVIER LEVER	B	1	PBT20%FV	195879-4	NOIR BLACK (28) 9.9.8	
CAPOT COVER	A	1	PBT20%FV	195879-3	ROUGE RED (29) 9.9.8	
LEVIER LEVER	B	1	PBT20%FV	195879-3	NOIR BLACK (30) 13.8	
CAPOT COVER	A	1	PBT20%FV	195879-2	BLEU BLUE (31) 13.8	
LEVIER LEVER	B	1	PBT20%FV	195879-2	NOIR BLACK (31) 13.8	
CAPOT COVER	A	1	PBT20%FV	195879-1	JAUNE YELLOW (32) 9.9.8	
LEVIER LEVER	B	1	PBT20%FV	195879-1	NOIR BLACK (32) 9.9.8	



NOTE  
 1 - CABLAGE MAXI : 8 FINS DE SECTION 0.6 mm2 (DIA MAXI ISOLANT DE 1.9 mm) POUR FORCE D'INSERTION MODULE/PORTE MODULE - F-20W ET POUR ETRE EN CONFORMITE AVEC LA SPEC. 108-15/58  
 - MAXIMAL CABLING : 8 WIRES SECTION 0.6mm2 (DIA MAXIMAL INSULATOR 1.9mm) FOR THE INSERTION FORCE MODULE/ASSY COVER - F-20W AND TO BE IN ACCORDANCE WITH THE SPEC. 108-15/58

COMPOSANTS ASSOCIES MATING PARTS	
REF. TE TE PART NUMBER	DESIGNATION
195879-1	PORTE CLIP 26 VOIES MDS RECEPTACLE HSG 28 W MDS

195879-1 REPRESENTEE AS SHOWN

TYCO ELECTRONICS CORPORATION 14000 WILSON BLVD WILSON, NJ 07090-3476 TEL: 908.687.5000 FAX: 908.687.5001 WWW.TYCOELECTRONICS.COM	TYCO ELECTRONICS CORPORATION 14000 WILSON BLVD WILSON, NJ 07090-3476 TEL: 908.687.5000 FAX: 908.687.5001 WWW.TYCOELECTRONICS.COM	Tyco Electronics France SAS 93300 Paris-la Defense, France TEL: +33 (0)1 47 88 10 10 FAX: +33 (0)1 47 88 10 11 WWW.TYCOELECTRONICS.COM	ASSEMBLY COVER 26W MDS GENE 2 PORTE MODULE 26 VOIES MDS GENE 2 00779 195879 1/1 2:1 1
---	---	--	---