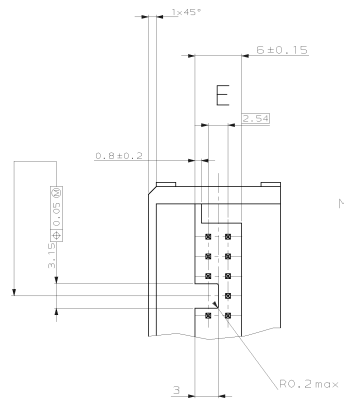
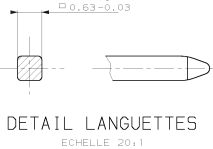
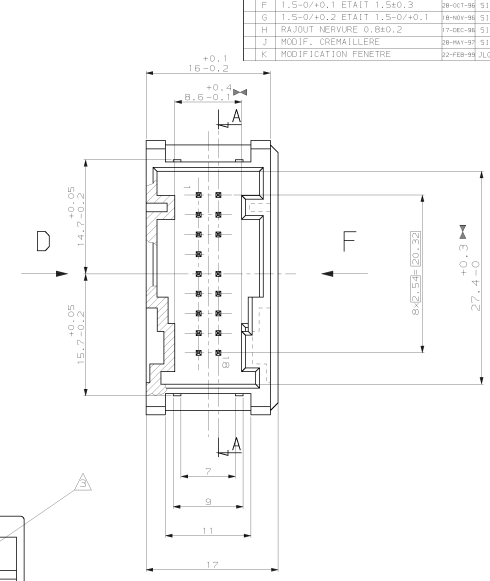
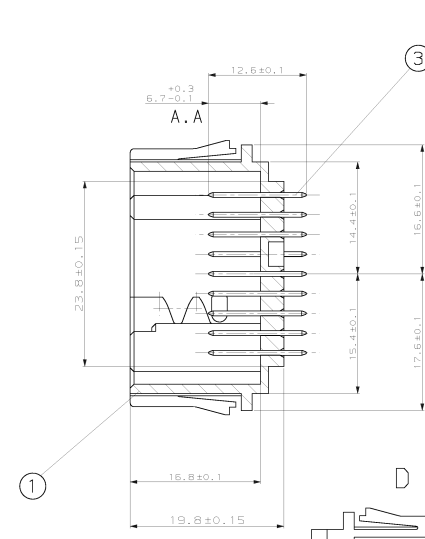
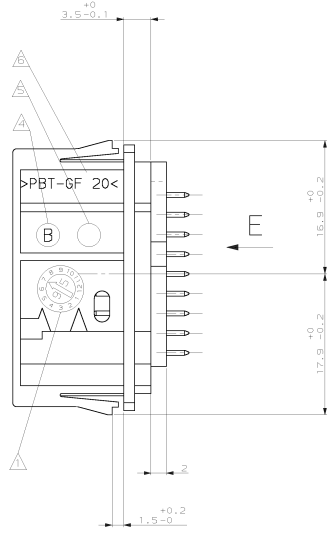
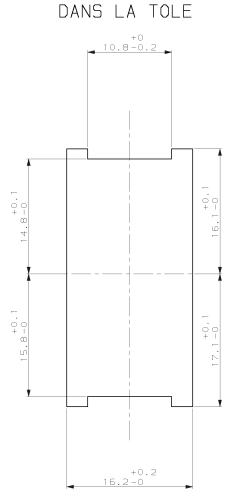
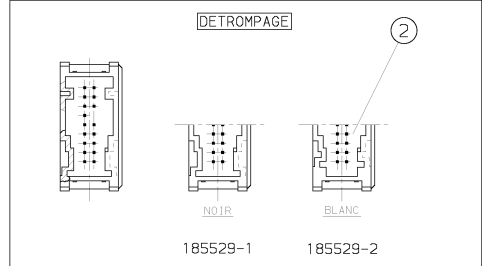


REVISIONS			
REV.	DATE	REVISION	BY
F	7	MODIF. CREMATILLERE	22-FEB-98 JLO
J		MODIF. NERVURE 0.8X0.2	17-OCT-98 S1
H		RAJOUT NERVURE 0.8X0.2	17-OCT-98 S1
G		11.5-0/0.2 ETATIT 1.5-0/0.1	18-MAR-98 S1
F		1.5-0/0.1 ETATIT 1.5-0.3	28-OCT-98 S1
E		CONFO. PIECE MOULEE	28-NOV-98 S1
D		CHANG TOLER B.G	28-NOV-98 S1
C		COTE CAPILLITE	29-NOV-98 S1
B		PERCEAGE Ø3	02-NOV-98 S1
A		COTE 3 ETATIT 2.05	30-JAN-98 S1

DECOUPAGE DANS LA TOLE



- Marquage:
- ▲ Date de Fabrication
 - ▲ Logo AMP
 - ▲ Reference du produit assemble
 - ▲ Indice de revision du moule
 - ▲ N° d'empreinte de moule
 - ▲ Matière: PBT 20GF
 - ▲ Cote capillite
 - 7 COMPATIBLE UNIQUEMENT AVEC CONNECTEURS FRANCAIS REF. - 185307-X - 185315-X



Q.TE.	MATIERE	DESIGNATION	COULEUR	REP.
17	CuSn6	CONTACT M05	-	③
-	1	PBT GF20	EMBASE CODAGE 2	BLANC ②
1	-	PBT GF20	EMBASE CODAGE 1	NOIR ①

185529-1 185529-2

EMBASE 18 VOIES M05

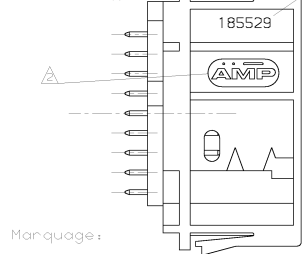
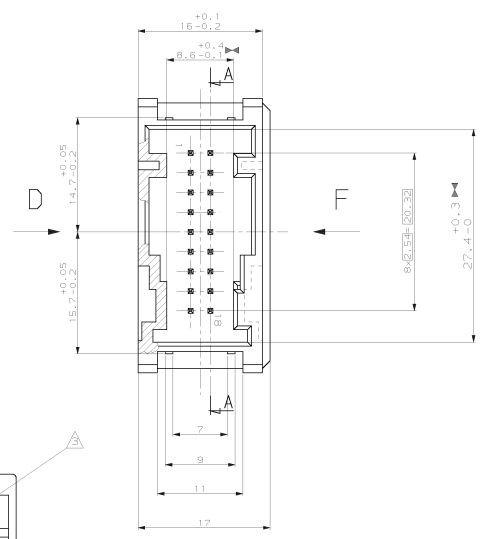
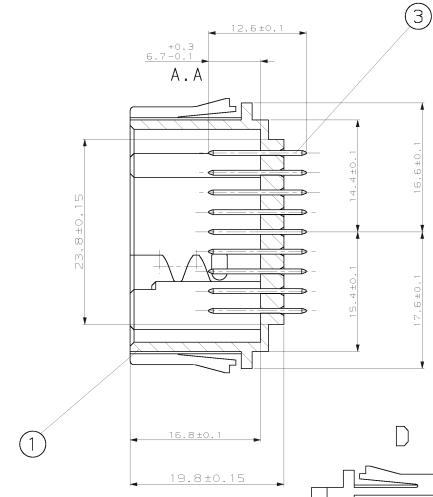
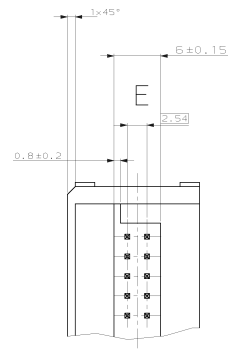
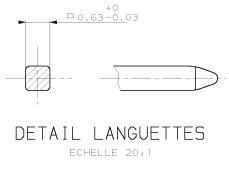
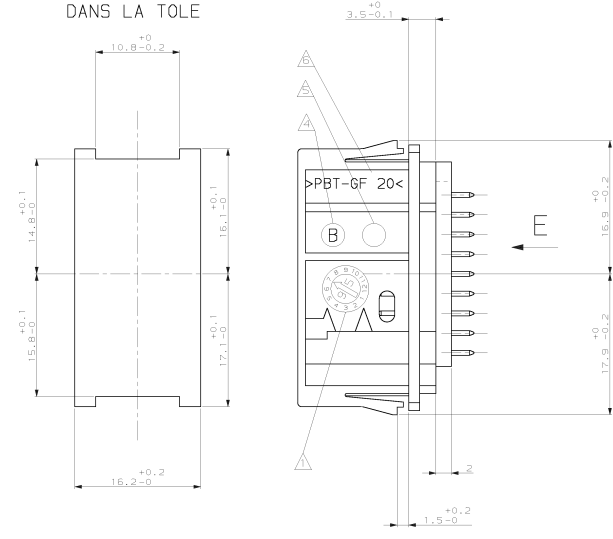
AMP DE FRANCE 95301 PONTOISE

100779 185529

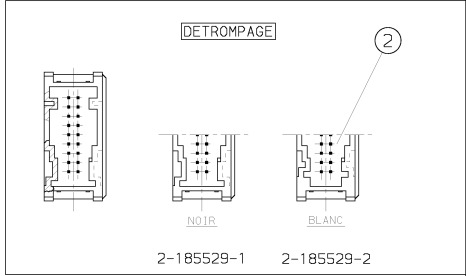
2-185529-1	REVISION	1	1	1
2-185529-2	REVISION	1	1	1

REVOLUTIONS		REVISIONS	
REVOLUTIONS	DATE	REVISIONS	DATE
-	-	-	-

DECOUPAGE
DANS LA TOLE



- Marquage:
- ▲ Date de Fabrication
 - ▲ Logo AMP
 - ▲ Reference du produit assemble
 - ▲ Indice de revision du moule
 - ▲ N° d'empreinte de moule
 - ▲ Matière: PBT 20GF
 - ▶ Cote capabilité
 - 7 COMPATIBLE UNIQUEMENT AVEC
CONNECTEURS FRANCAIS REF.
- 185307-X
- 185315-X



ASSY. PN	18	CuSn6	CONTACT MGS	-	③
	-	1	PBT GF20	EMBASE CODAGE 2	BLANC
	1	-	PBT GF20	EMBASE CODAGE 1	NOIR
QTE.	MATIERE	DESIGNATION	COULEUR	REP.	

THIS DRAWING IS A CONTROLLED DOCUMENT.		DE BLANC EST UN DOCUMENT CONTROLÉ.		AMP DE FRANCE	
REVISIONS		REVISIONS		95301 PONTAISE	
DATE		DATE		TYPE	
185529-1		185529-2		EMBASE 18 VOIES MGS	
1		1		A 00778 185529	
DATE		DATE		REVISIONS	
185529-1		185529-2		1	