

4

3

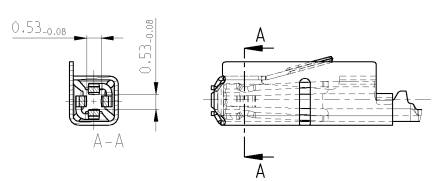
2

1

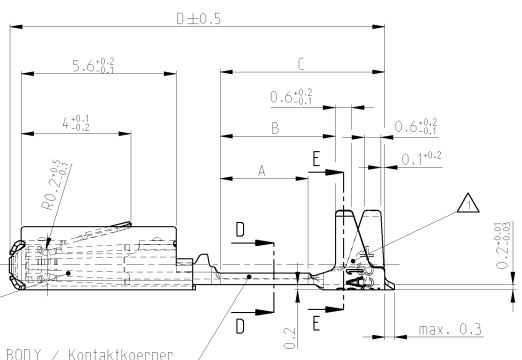
THIS DRAWING IS UNPUBLISHED. RELEASED FOR PUBLICATION  
 (C) COPYRIGHT BY TYCO ELECTRONICS CORPORATION. ALL RIGHTS RESERVED.

REVOLUTIONS		DATE	BY	APP'D
TR	DESCRIPTION			
A	NEW CAD DRAWING CREATED	24OCT2005	Abp	Kam

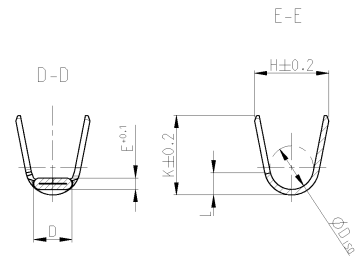
GOLD VERSION  
 Vergoldete Ausfuehrung



SPRING / Ueberfeder  
 MATERIAL: X10CrNi 18 8  
 SURFACE / Oberflaeche: PLAIN/blank

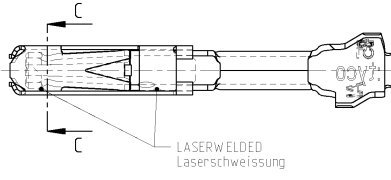
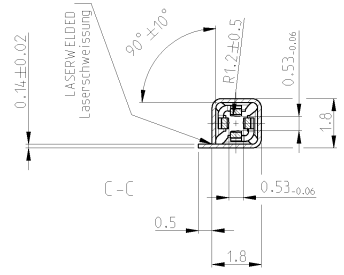


BODY / Kontaktkoerper  
 MATERIAL: CuNiSi  
 SURFACE / Oberflaeche: SEE CHART / siehe Tabelle



NOTES  
 Bemerkungen

- △ BRANDNAME, MANUFACTURING LOCATION CODE, DATE CODE  
 DIE IDENTIFICATION, REVISION ACCORDING  
 AMP SPEC: 115-18016-7  
 Herstellerlogo, Laendercode, Datumcode  
 Werkzeug-Kennzeichnung, Revision nach  
 AMP Spez. 115-18016-7
- 2 SUITABLE FOR PIN CONTACT SEE DRAWING 929453  
 Passend zu Stiftkontakt siehe Zeichnung 929453
- 3 DETAILS OF DESIGN ARE LEFT TO MANUFACTURER  
 Einzelheiten der Ausfuehrung bleiben dem Hersteller ueberlassen
- 4 FOR FLR-CONDUCTOR ACCORDING TO DIN 72551-6 ONLY  
 Nur fuer FLR-Leitung nach DIN 72551 Teil 6



PART NUMBER	REV	LOOSE PIECE PART NUMBER	INS. RANGE mm	SURFACE Oberflaeche	LENGTH Laenge	WELDING AREA Schweißanschluss	INS. CRIMP Iso. Crimp	WEIGHT Gewicht g
1719180-5	A	1719181-5	1.2 - 1.9	Au	B = 4.2 C = 6 D = 13.66	A = 3.2 D = 1.4 E = 0.4	H = 2.7 K = 2.9 L = 0.7 ØD <sub>ISO</sub> = 1.6	0.12
1719180-1	A	1719181-1	1.2 - 1.9	Sn	B = 4.2 C = 6 D = 13.66	A = 3.2 D = 1.4 E = 0.4	H = 2.7 K = 2.9 L = 0.7 ØD <sub>ISO</sub> = 1.6	0.12

DIMENSIONS: mm		DRAWN: Abraham, G. 240/L105		DATE: 25OCT05		BY: Kämpmann, H.		CHECKED: -	
MATERIAL: -		FINISH: -		PRODUCT SPEC: 108-18030		APPLICATION SPEC: -		WEIGHT: -	
CUSTOMER DRAWING		SCALE: 10:1		SHEET: 1 OF 1		REV: A		RESTRICTED TO: -	



2:1

AMP 1471-6 REV 2004000  
 PRO/ENGINEER DRAWING