

4

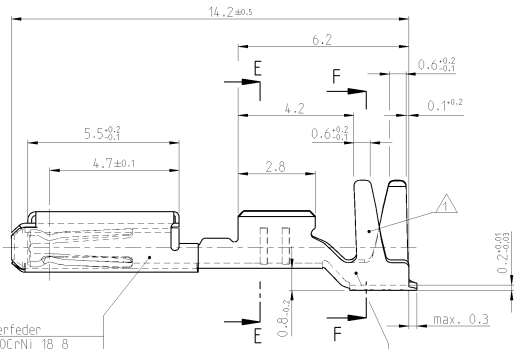
3

2

1

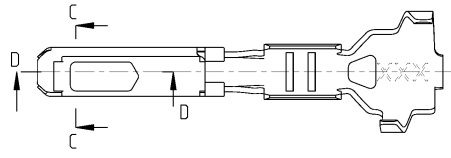
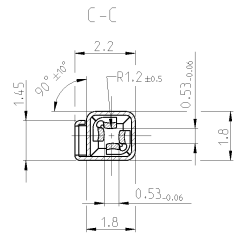
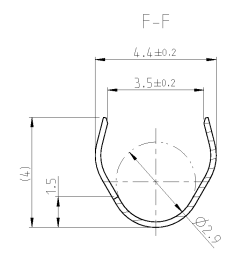
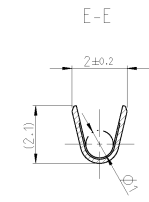
THIS DRAWING IS UNPUBLISHED. RELEASED FOR PUBLICATION 2009
 (C) COPYRIGHT 2009 TE Connectivity ALL RIGHTS RESERVED

REVOLUTIONS		DATE	SWN	APFD
A	NEW DRAWING CREATED	01JUN2004	ABP	H.A.L.
A1	NEW TE LOGO (ECR-11-014427)	18JUL2011	ABP	Brun



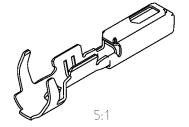
SPRING/Ueberfeder
 Material: X10CrNi18.8
 EN 10088-2
 SURFACE/Oberflaeche: blank

BODY/Kontaktkoerner
 Material: CuNiSi
 Oberflaeche: siehe Tabelle
 SURFACE: SEE CHART

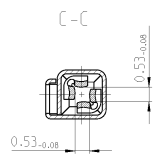


NOTES
 Bemerkungen

- 1 DATE-CODE (WEEK/YEAR (E.G. WEEK NUMBER 38/ YEAR 2004)) AND TE REVISION (E.G. REV. B)
 Datumscode (Woche / Jahr, z.B. KW38/ Jahr 2004) und TE-Revision (z.B.Rev.B)
- 2 SUITABLE FOR PIN CONTACT SEE DRAWING: TE: 929453
 Passend zu Stiftkontakt siehe Zeichnung: TE: 929453
- 3 DETAILS OF DESIGN ARE LEFT TO MANUFACTURER
 Einzelheiten der Ausfuehrung bleiben dem Hersteller ueberlassen
- 4 SUITABLE SINGLE WIRE SEAL 967067-1 COLOR GREEN
 Zugehoerige Einzeldichtung 967067-1 Farbe gruen



GOLD VERSION
 Vergoldete Ausfuehrung



INSUL-DIA IsolationsØ	WIRE SIZE RANGE	WIRE RANGE	WIRE RANGE	WIRE RANGE	WIRE RANGE
2.2 mm	0.5-0.75 mm ²	Au	1703033-5	1703032-5	A
2.2 mm	0.5-0.75 mm ²	Sn	1703033-1	1703032-1	A

THIS DRAWING IS A CONTROLLED DOCUMENT.		SWN 01JUN2004		TE Connectivity	
DIMENSIONS: mm		CIN Abraham G		Micro Quadlok System	
TOLERANCES: UNLESS SPECIFIED		CEN Rammann		SOCKET CONTACT	
±0.2		CEN Blumhagen		Tabellenzeichnung Buchsenkontakt	
±0.1		CEN M		SIZE CASE CODE DRAWING NO	
±0.05		CEN		114-18025	
±0.02		CEN		WEIGHT 0.13 g	
±0.01		CEN		SCALE 10:1	
±0.005		CEN		SHEET 1 OF 1	
±0.002		CEN		REV A1	
±0.001		CEN		RESTRICTED TO	
±0.0005		CEN		CUSTOMER DRAWING	