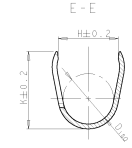
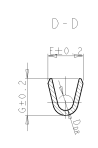
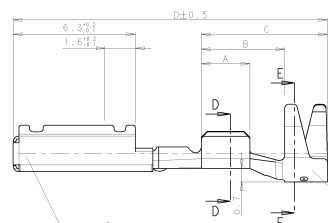
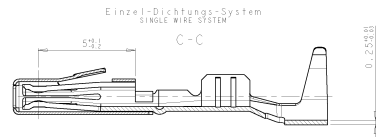
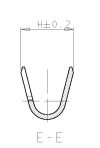
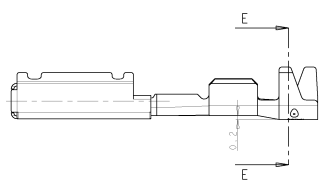


8	7	6	5	4	3	2	1
REVISIONS	REVISIONS	REVISIONS	REVISIONS	REVISIONS	REVISIONS	REVISIONS	REVISIONS
DATE	DATE	DATE	DATE	DATE	DATE	DATE	DATE
BY	BY	BY	BY	BY	BY	BY	BY

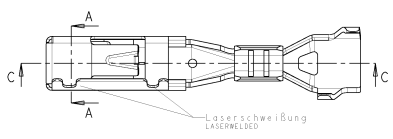
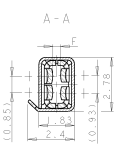
REV	DATE	REVISIONS	BY	CHK	APP
1	10.03.03	Änderung			
2	10.03.03	Änderung			

Normale Anwendung
USUAL APPLICATION



Überfeder/SPRING
Material: X12CrNi17.7
DIN 17224
Oberfläche: blank
SURFACE: UNCOATED

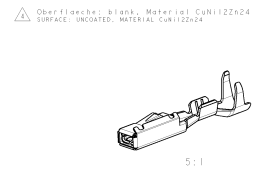
Kontaktkörper/BODY
Material: CuNiSi F57
Oberfläche: Sn; 0.8-2um Sn
SURFACE: Au; 1.8um Au über Ni selektiv im Kontaktbereich
1.8um Au OVER Ni SELECTIVE IN CONTACT AREA



AMP BESTELL-NR. ORDER NO.	REV.	Einzelansführung LOOSE PIECE AMP-Serial-Nr. AMP-ORDER-NO.	REV.	VERSION	DOB WIRE-SIZE-RANGE (mm²)	Oberfläche SURFACE	ART (N)	GRAMM GEWICHT	F (mm)	Länge LENGHT	Drahtcrimp WIRE CRIMP	Isol.-Crimp INSUL. CRIMP	DOB (mm²)	Isoliert INSUL.	FOR CAVITY-DIA. 3.6mm	FOR CAVITY-DIA. 4mm
1241605-2		1241606-2	C	0.75-1.5	Au	0.2	0.4-0.04	A = 3.5 B = 5.1 C = 7.3 D = 16.2	E = 2.7 G = 2.9 D _W = 1	H = 3.6 K = 3.9 D _{SO} = 2.9	1.0 1.5	1.9-2.4	-	-	AMP: 963142-1	schwarz/BLACK
1241605-1	C	1241606-1	C	0.75-1.5	Sn	0.2	0.4-0.04	A = 3.5 B = 5.1 C = 7.3 D = 16.2	E = 2.7 G = 2.9 D _W = 1	H = 3.6 K = 3.9 D _{SO} = 2.9	1.0 1.5	1.9-2.4	-	-	AMP: 963142-1	schwarz/BLACK
1241603-2		1241604-2	C	0.35-0.5	Au	0.2	0.4-0.04	A = 2.5 B = 4.3 C = 6.5 D = 16.2	E = 1.9 G = 1.9 D _W = 0.8	H = 3.1 K = 4 D _{SO} = 2.6	0.35 0.5	1.1-1.3	-	-	AMP: 963142-1	schwarz/BLACK
1241603-1	C	1241604-1	C	0.35-0.5	Sn	0.2	0.4-0.04	A = 2.5 B = 4.3 C = 6.5 D = 16.2	E = 1.9 G = 1.9 D _W = 0.8	H = 3.1 K = 4 D _{SO} = 2.6	0.35 0.5	1.1-1.3	-	-	AMP: 963142-1	schwarz/BLACK
1355553-3	A	1355554-3	A	0.75-1.5	Au	0.2	0.4-0.04	A = 3.5 B = 5.1 C = 7.3 D = 16.5	E = 2.7 G = 2.9 D _W = 1.4	H = 3.7 K = 3.9 D _{SO} = 2.1	1.0 1.5	1.9-2.4	-	-	AMP: 963142-1	schwarz/BLACK
1355553-1	A	1355554-1	A	0.75-1.5	Sn	0.2	0.4-0.04	A = 3.5 B = 5.1 C = 7.3 D = 16.5	E = 2.7 G = 2.9 D _W = 1.4	H = 3.7 K = 3.9 D _{SO} = 2.1	1.0 1.5	1.9-2.4	-	-	AMP: 963142-1	schwarz/BLACK
1355556-3	A	1355557-3	A	0.35-0.5	Au	0.2	0.4-0.04	A = 2.5 B = 4.3 C = 5.6 D = 15.8	E = 1.9 G = 1.9 D _W = 0.8	H = 2.7 K = 2.7 D _{SO} = 1.4	0.35 0.5	1.1-1.3	-	-	AMP: 963142-2	grau/GREY
1355556-1	A	1355557-1	A	0.35-0.5	Sn	0.2	0.4-0.04	A = 2.5 B = 4.3 C = 5.6 D = 15.8	E = 1.9 G = 1.9 D _W = 0.8	H = 2.7 K = 2.7 D _{SO} = 1.4	0.35 0.5	1.1-1.3	-	-	AMP: 963142-2	grau/GREY

Bemerkungen
NOTES

- Kontakt nur fuer Testzwecke (erhohte Steckzyklenzahl), nicht fuer Serienanwendung
CONTACT ONLY FOR SPECIAL TEST-APPLICATIONS (HIGH RATING-CYCLES), NOT FOR SERIES-APPLICATION
- Neu fuer FLR-Leitung nach DIN 19255, Teil 1
FOR FLR-CONDUCTOR ACCORDING TO DIN 19255-1 ONLY
- Einzelheiten der Ausfuehrung bleiben dem Hersteller ueberlassen
DETAILS OF DESIGN ARE LEFT TO MANUFACTURER



AMP BESTELL-NR. ORDER NO.	REV.	Einzelansführung LOOSE PIECE AMP-Serial-Nr. AMP-ORDER-NO.	REV.	VERSION	DOB WIRE-SIZE-RANGE (mm²)	Oberfläche SURFACE	ART (N)	GRAMM GEWICHT	F (mm)	Länge LENGHT	Drahtcrimp WIRE CRIMP	Isol.-Crimp INSUL. CRIMP	DOB (mm²)	Isoliert INSUL.	FOR CAVITY-DIA. 3.6mm	FOR CAVITY-DIA. 4mm
1355556-1	A	1355557-1	A	0.35-0.5	Sn	0.2	0.4-0.04	0.4-0.04	2.5	15.8			1.4			