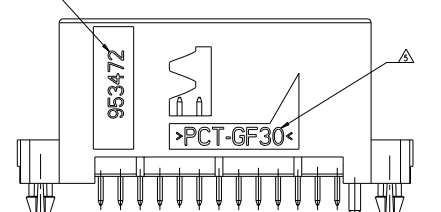
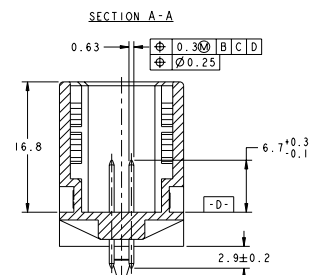
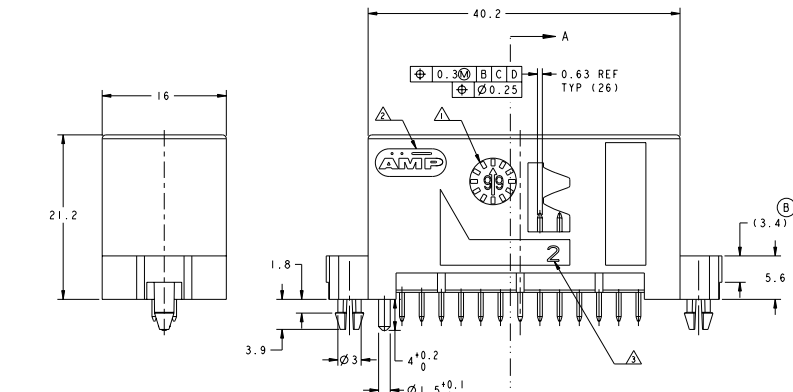


	POST-TINNED SELECTIVE (POST-ETAME SELECTIF)	1-953472-2	BLUE (BLEU)	
	POST-TINNED NO SELECTIVE (POST-ETAME NON SELECTIF)	953472-2		
	POST-TIN SELECTIVE (POST-ETAME SELECTIF)	1-953472-1	YELLOW (JAUNE)	
	POST-TIN NO SELECTIVE (POST-ETAME NON SELECTIF)	953472-1		
CODING (SCALE 2:1) (DETROMPAGE)	PIN FINISH (FINITION CONTACTS)	PN ASSY	COLOR (COULEUR)	RECOMMENDED PCB LAYOUT (SCALE 2:1) (RECOMMANDATION IMPLANTATION C1)

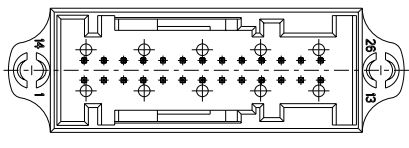
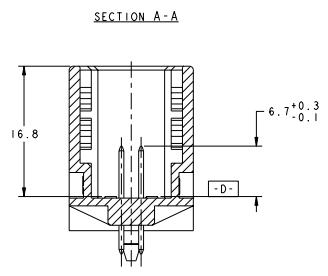
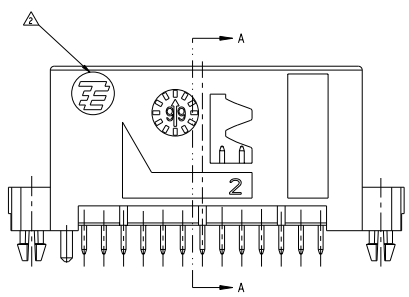
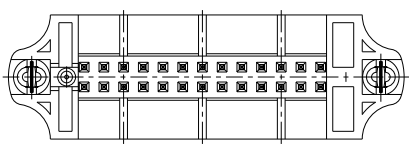


- NOTES:
- △ HOLDING DATE CODE
  - △ TYCOELECTRONICS STAMP
  - △ MOLD CAVITY MARKING
  - △ TYCO ELECTRONICS PART NUMBER
  - △ MATERIAL REFERENCE
- DATE CODE MOULAGE  
LOGO TYCOELECTRONICS  
N° EMPREINTE MOULE  
REFERENCE TYCO ELECTRONICS  
REFERENCE MATIERE

PCT 30% GLASS FIBER (PCT 30% FIBRE DE VERRE)	COPPER ALLOY (ALLIAGE CUIVRE)	TIN OVER NICKEL (ETAIN SUR SOUS COUCHE NICKEL)																		
HOUSING MATERIAL (MATIERE EMBASE)	PIN MATERIAL (MATIERE CONTACT)	PIN FINISH (FINITION CONTACT)																		
HEADER COMPLIANT WITH PSA INTERFACE SPECIFICATION C-PSACR95724 (EMBASE CONFORME AU PLAN D'INTERFACE C-PSACR95724)																				
<table border="1"> <thead> <tr> <th>NO</th> <th>DESCRIPTION</th> <th>REV</th> <th>DATE</th> <th>BY</th> <th>CHK</th> </tr> </thead> <tbody> <tr> <td>1</td> <td>PSA INTERFACE SPECIFICATION C-PSACR95724</td> <td>1</td> <td>19-08-83</td> <td>J.L.</td> <td>J.L.</td> </tr> <tr> <td>2</td> <td>PSA INTERFACE SPECIFICATION C-PSACR95724</td> <td>2</td> <td>19-08-83</td> <td>J.L.</td> <td>J.L.</td> </tr> </tbody> </table>			NO	DESCRIPTION	REV	DATE	BY	CHK	1	PSA INTERFACE SPECIFICATION C-PSACR95724	1	19-08-83	J.L.	J.L.	2	PSA INTERFACE SPECIFICATION C-PSACR95724	2	19-08-83	J.L.	J.L.
NO	DESCRIPTION	REV	DATE	BY	CHK															
1	PSA INTERFACE SPECIFICATION C-PSACR95724	1	19-08-83	J.L.	J.L.															
2	PSA INTERFACE SPECIFICATION C-PSACR95724	2	19-08-83	J.L.	J.L.															
<table border="1"> <thead> <tr> <th>NO</th> <th>DESCRIPTION</th> <th>REV</th> <th>DATE</th> <th>BY</th> <th>CHK</th> </tr> </thead> <tbody> <tr> <td>1</td> <td>PSA INTERFACE SPECIFICATION C-PSACR95724</td> <td>1</td> <td>19-08-83</td> <td>J.L.</td> <td>J.L.</td> </tr> <tr> <td>2</td> <td>PSA INTERFACE SPECIFICATION C-PSACR95724</td> <td>2</td> <td>19-08-83</td> <td>J.L.</td> <td>J.L.</td> </tr> </tbody> </table>			NO	DESCRIPTION	REV	DATE	BY	CHK	1	PSA INTERFACE SPECIFICATION C-PSACR95724	1	19-08-83	J.L.	J.L.	2	PSA INTERFACE SPECIFICATION C-PSACR95724	2	19-08-83	J.L.	J.L.
NO	DESCRIPTION	REV	DATE	BY	CHK															
1	PSA INTERFACE SPECIFICATION C-PSACR95724	1	19-08-83	J.L.	J.L.															
2	PSA INTERFACE SPECIFICATION C-PSACR95724	2	19-08-83	J.L.	J.L.															
<table border="1"> <thead> <tr> <th>NO</th> <th>DESCRIPTION</th> <th>REV</th> <th>DATE</th> <th>BY</th> <th>CHK</th> </tr> </thead> <tbody> <tr> <td>1</td> <td>PSA INTERFACE SPECIFICATION C-PSACR95724</td> <td>1</td> <td>19-08-83</td> <td>J.L.</td> <td>J.L.</td> </tr> <tr> <td>2</td> <td>PSA INTERFACE SPECIFICATION C-PSACR95724</td> <td>2</td> <td>19-08-83</td> <td>J.L.</td> <td>J.L.</td> </tr> </tbody> </table>			NO	DESCRIPTION	REV	DATE	BY	CHK	1	PSA INTERFACE SPECIFICATION C-PSACR95724	1	19-08-83	J.L.	J.L.	2	PSA INTERFACE SPECIFICATION C-PSACR95724	2	19-08-83	J.L.	J.L.
NO	DESCRIPTION	REV	DATE	BY	CHK															
1	PSA INTERFACE SPECIFICATION C-PSACR95724	1	19-08-83	J.L.	J.L.															
2	PSA INTERFACE SPECIFICATION C-PSACR95724	2	19-08-83	J.L.	J.L.															

REV	DATE	REVISIONS	BY	CHK	APP
F	7	SEE SHEET 1			

OTHER DESIGN ACCEPTED AVAILABLE FOR ALL VERSIONS  
 (AUTRES DESIGN ACCEPTES VALABLES POUR TOUTES LES VERSIONS)



FOR ALL OTHER DIMENSIONS AND SHAPES SEE SHEET 1/2  
 (POUR LES AUTRES DIMENSIONS ET FORMES VOIR FEUILLE 1/2)

SHEET: 1/2 L'ALANCE: 1/2		TFC ELECTRONICS FRANCE SAS 93300 Pantecourt, France	
PART: 108-15215 QTY: 1		HEADLINE: 108-15215 DESCRIPTION: 26 POSN. MOS. STRAIGHT WITH BOARD-LOCK	
WEIGHT: 1.5 g		CUSTOMER: A 00779 ©-953472	
CUSTOMER DRAWING		SHEET: 1/2 OF 2	