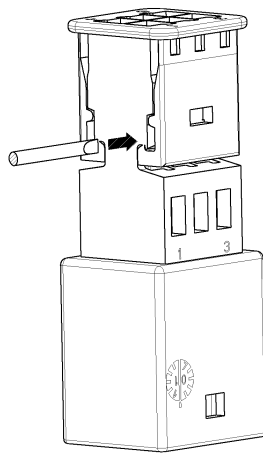


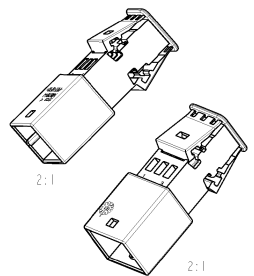
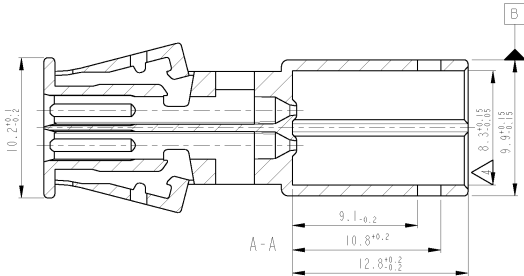
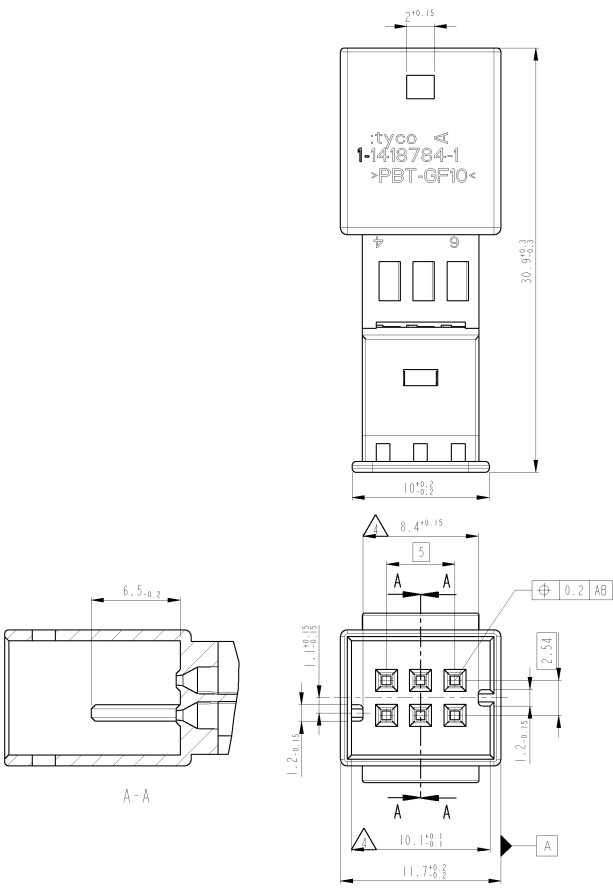
OPENING GUIDE: TO OPEN THE LOCKED RETAINER, USE A  $\varnothing 1 \times 0.18 \text{MM}$  SCREWDRIVER AND PUSH IT IN THE SHOWN OPENING.  
 Öffnungsanleitung: Zum Öffnen des verrasteten Deckels wird ein  $\varnothing 1 \times 0.18 \text{mm}$  Schraubendreher in die gezeigte Öffnung gedrückt.



REV. NO.	DATE	BY	CHKD
A1	21042005	KS	BL

- Bemerkungen
- 1 Passender Kontakt, z.B.: 1355719 (DGB 0.14-0.22mm<sup>2</sup>)  
928918 (DGB 0.20-0.50mm<sup>2</sup>)  
963716 (DGB 0.75mm<sup>2</sup>)
  - 2 Passender Gegenstecker: 1418783
  - 3 Schuttgut in Karton
- ⚠ Formbedingter Verzug zul. 0.4mm

- NOTES
- 1 SUITABLE CONTACT E.G.: 1355719 (WIRE RANGE 0.14-0.22mm<sup>2</sup>)  
928918 (WIRE RANGE 0.20-0.50mm<sup>2</sup>)  
963716 (WIRE RANGE 0.75mm<sup>2</sup>)
  - 2 MATING PARTS: 1418783
  - 3 PACKAGING: LOOSE PIECE IN CARD BOX
- ⚠ WARPAGE 0.4MM PERMITTED



TYCO PART-NO.	REV.	MATERIAL	COLOUR SURFACE	MATERIAL	APPLICATION SPEC.	REVISIONS	DATE	BY	CHKD
1-1418784-1	B	PBT-GF10	GREY				21042005	KS	BL
				CUSTOMER DRAWING		/ZUNDRZEICHNUNG		SCALE 5:1	