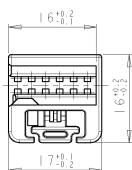
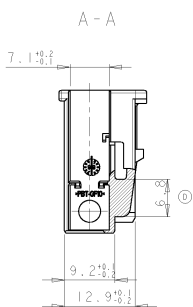
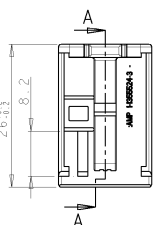
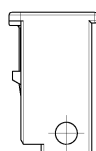
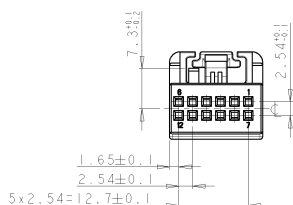
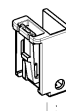
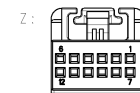
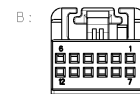
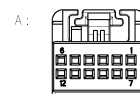


TECHNISCHE ZEICHNUNG / RELEASED FOR PUBLICATION
(C) Copyright BY ALL RIGHTS RESERVED
DATE: 2009-08-22

LOC	DISP	REVISIONS		DATE	DMN	APFG
A	-	REV	DESCRIPTION			
PROJECT NO.	DI	REVISED PER ECO-11-005294		30APR11	RK	HMR



Kodierungen
CODINGS
2:1



Bemerkungen
NOTES

- 1 Massgebend ist der deutsche Text
ONLY THE GERMAN-LANGUAGE VERSION SHALL BE BINDING
- 2 Verpackung: Schüttgut
PACKAGING: LOOSE PIECE
- 3 Einzelheiten der Ausführung bleiben dem Hersteller ueberlassen
DETAILS OF DESIGN ARE LEFT TO MANUFACTURER
- 4 DIN 16901-140, mittig ueber Nennmass
DIN 16901-140, CENTRIC TO NOMINAL DIMENSION
- 5 Produkt darf nur mit Zustimmung von BMW geaendert werden
PRODUCT SHALL BE CHANGED WITH THE AGREEMENT OF BMW ONLY

9-1355524-3	D	Z	Abdeckkappe / COVER	wasserblau / WATER BLUE	S	2,3	
2-1355524-3	D	B	Abdeckkappe / COVER	natur / NATURAL	S	2,3	1241768-2 1241768-1
1-1355524-3	D	A	Abdeckkappe / COVER	schwarz / BLACK	S	2,3	
BESTELL-NR. ORDER NO.	REV.	KOD. COD.	BENENNUNG DESCRIPTION	OBERFLAECHE SURFACE	ART KIND	GRAMM GEWICHT WEIGHT	Passend zu: SUITABLE FOR: Stiffeners PIN HEADER
				FARBE/COLOUR			

DIMENSIONEN: MASSUNGEN IN MM		ZUGNANDE ALLE METRISCHEN ANGABEN SIND IN MILLIMETER ANZUGEN GENERAL DIMENSIONS ALL DIMENSIONS ARE IN MILLIMETERS		DMN 0. Paetschula 20 JUL 99	TE Connectivity
MATERIAL PBT-GF10		ANWENDUNG APPLICATION SPEC. PBT-GF10		PROJEKT A2100779	
CUSTOMER DRAWING				SKIZZE DRAWING	MICRO QUADLOK SYSTEM COVER, 12 POS Abdeckkappe, 12-pol.
SCALE 1:1				SIZE A2100779	DRAWING NO. 1355524
SHEET 1 OF 1				REV D1	CHECKED FOR -