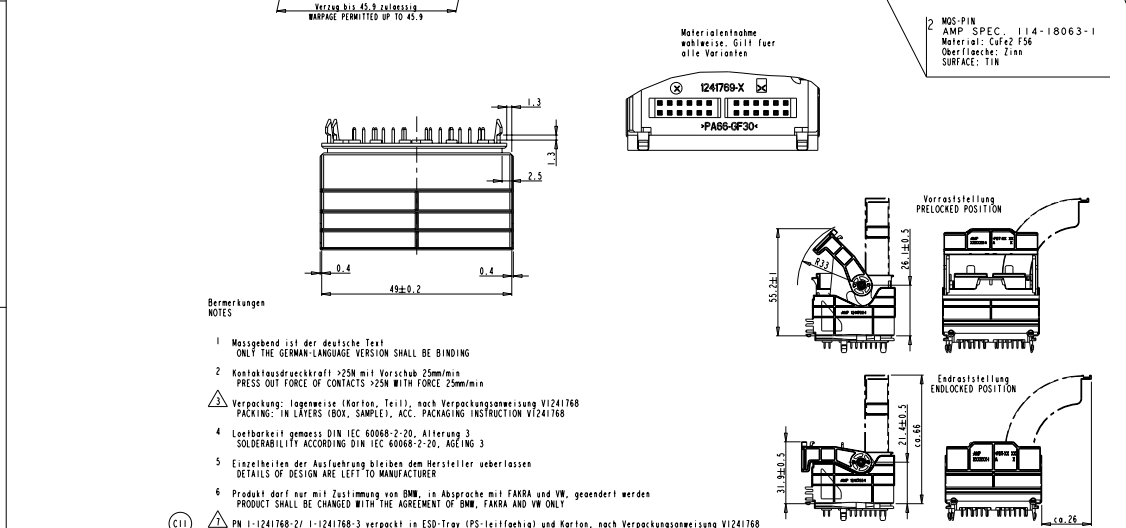
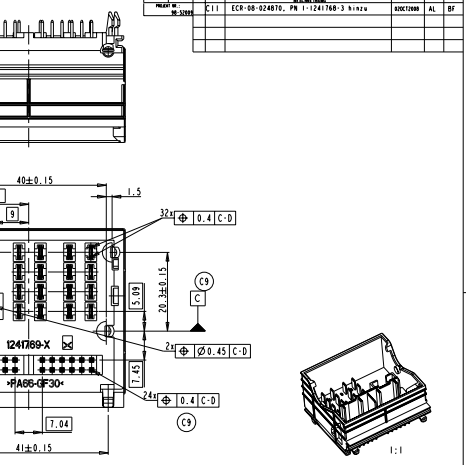
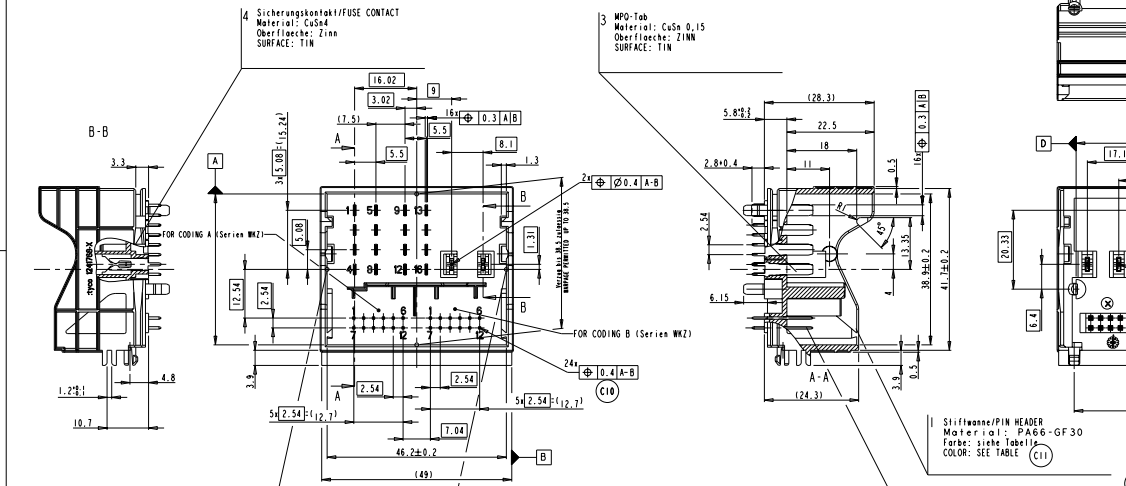


REV.	DATE	REVISIONS	DATE	BY	CHK
AI	-	INITIAL RELEASE			
C11	ECR-08-024870	PN 1-1241768-3 NINA	200708	AL	BF

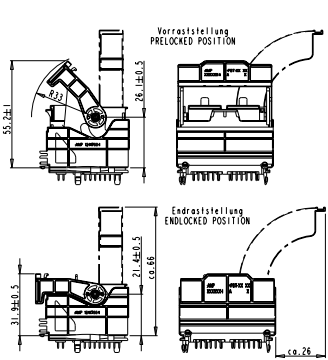


REV.	POS.	SH.	QTY.	Benennung	DESCRIPTION	Überfläche	Passend zu
SEE SHEET 2 OF 2	-1241768-3	C	-	2	FUSE CONTACT	TIN	1241765-2
			4	2	TAB 2.8X0.6	TIN	1-1355035-1
			2	24	MOS PIN	TIN	
			5	1	PIN HEADER	LIGHT BLUE	
			-	1	ESD-TRAY	BLACK	
SEE SHEET 2 OF 2	-1241768-2	C	-	2	FUSE CONTACT	TIN	1241765-2
			4	2	TAB 2.8X0.6	TIN	1-1355035-1
			2	24	MOS PIN	TIN	
			2	4	PIN HEADER	BLACK	
			4	2	FUSE CONTACT	TIN	1241765-2
SEE SHEET 2 OF 2	1241768-7	B	3	16	TAB 2.8X0.6	TIN	1-1355035-1
			10	1	PIN HEADER	BLACK	
			9	1	MINI FUSE, 10A	-	
			4	2	FUSE CONTACT	TIN	1241765-2
			3	16	TAB 2.8X0.6	TIN	1-1355035-1
SEE SHEET 2 OF 2	1241768-5	A	3	16	TAB 2.8X0.6	TIN	1241765-2
			8	1	PIN HEADER	BLACK	
			4	2	FUSE CONTACT	TIN	1241765-2
			2	-	MOS PIN	-	
			7	1	PIN HEADER	BLACK	
SEE SHEET 2 OF 2	1241768-4	C	4	2	FUSE CONTACT	TIN	1241765-2
			3	16	TAB 2.8X0.6	TIN	1-1355035-1
			2	-	MOS PIN	-	
			7	1	PIN HEADER	BLACK	
			4	2	FUSE CONTACT	TIN	1241765-2
SEE SHEET 2 OF 2	1241768-3	C	3	16	TAB 2.8X0.6	TIN	1241765-2
			6	1	PIN HEADER	BLACK	
			4	2	FUSE CONTACT	TIN	1241765-2
			3	16	TAB 2.8X0.6	TIN	1-1355035-1
			2	-	MOS PIN	-	
SEE SHEET 2 OF 2	1241768-2	C	4	2	FUSE CONTACT	TIN	1241765-2
			3	16	TAB 2.8X0.6	TIN	1-1355035-1
			2	24	MOS PIN	TIN	
			5	1	PIN HEADER	BLACK	
			4	2	FUSE CONTACT	TIN	1241765-2
SEE SHEET 2 OF 2	1241768-1	C	3	16	TAB 2.8X0.6	TIN	1241765-2
			2	24	MOS PIN	TIN	1-1355035-1
			1	1	PIN HEADER	BLACK	
			4	2	FUSE CONTACT	TIN	1241765-2
			3	16	TAB 2.8X0.6	TIN	1-1355035-1

Bemerkungen  
 NOTES

- 1 Maßgebend ist der deutsche Text  
 ONLY THE GERMAN-LANGUAGE VERSION SHALL BE BINDING
- 2 Kontaktausdrückkraft >25N mit Vorschub 25mm/min  
 PRESS OUT FORCE OF CONTACTS >25N WITH FORCE 25mm/min
- 3 Verpackung: loseweise (Karton, Teil), nach Verpackungsweisung V1241768  
 PACKING: IN LAYERS (BOX, SINGLE), ACC. PACKAGING INSTRUCTION V1241768
- 4 Lötbarkeit gemäss DIN IEC 60068-2-20, Alterung 3  
 SOLDERABILITY ACCORDING DIN IEC 60068-2-20, AGEING 3
- 5 Einzelheiten der Ausführung bleiben dem Hersteller überlassen  
 DETAILS OF DESIGN ARE LEFT TO MANUFACTURER
- 6 Produkt darf nur mit Zustimmung von BMM, in Absprache mit FAXRA und VW, geändert werden  
 PRODUCT SHALL BE CHANGED WITH THE AGREEMENT OF BMM, FAXRA AND VW ONLY

PN 1-1241768-2/ 1-1241768-3 verpackt in ESD-Tray (PS-leitfähig) und Karton, nach Verpackungsweisung V1241768  
 PN 1-1241768-2/ 1-1241768-3 PACKED INTO ESD-TRAY (PS CONDUCTIVE) AND CARTON, ACC. PACKAGING INSTRUCTION V1241768



TE	Bestell-Nr.	REV.	POS.	SH.	QTY.	Benennung	DESCRIPTION	Überfläche	Passend zu
	ORDER NO.							Farbe	Suitable for
								COLOUR	SOCKET HOUSING

