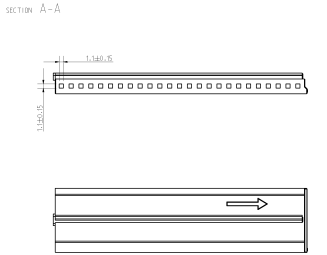
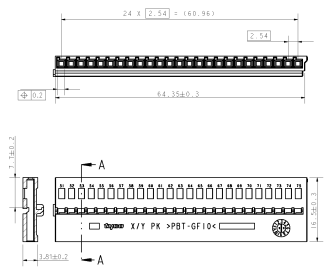


BUCHSENLEISTE 25-POLIG  
 25-PIN SOCKET STRIP

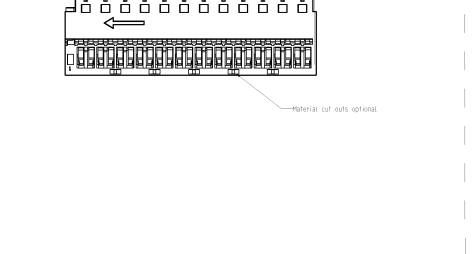
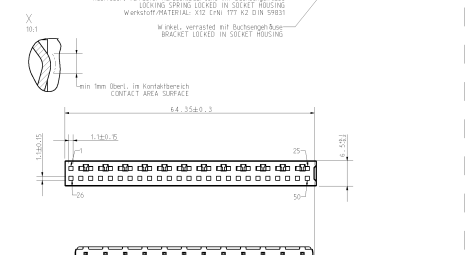
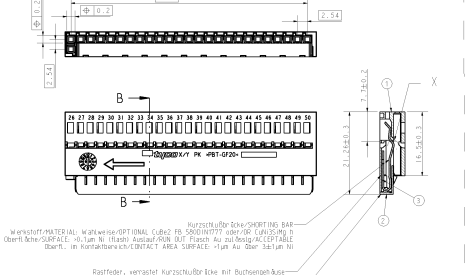
Buchsengehäuse 25-polig links /  
 SOCKET HOUSING 25-WAY LEFT



REVISIONS	NO.	DATE	DESCRIPTION	BY	CHKD.
1	1.0	2004-04-05	INITIAL RELEASE		

BUCHSENLEISTE 50-POLIG  
 50-PIN SOCKET STRIP

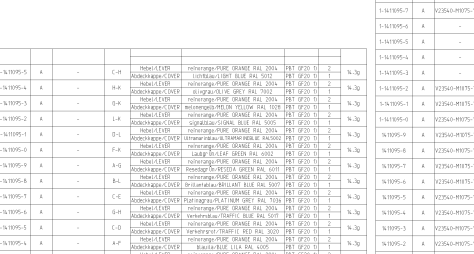
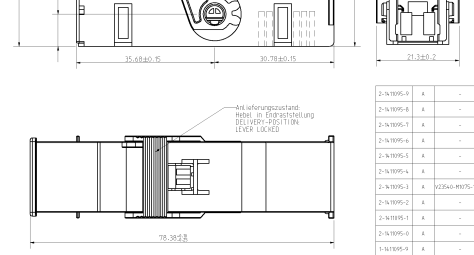
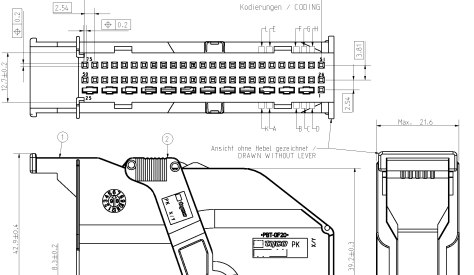
Buchsengehäuse 50-polig links /  
 SOCKET HOUSING 50-WAY LEFT



REVISIONS	NO.	DATE	DESCRIPTION	BY	CHKD.
1	1.0	2004-04-05	INITIAL RELEASE		

ABDECKKAPPE 75-POLIG  
 75-PIN COVER

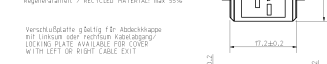
Abdeckkappe 75-polig links /  
 COVER 75-WAY LEFT



REVISIONS	NO.	DATE	DESCRIPTION	BY	CHKD.
1	1.0	2004-04-05	INITIAL RELEASE		

REVISIONS	NO.	DATE	DESCRIPTION	BY	CHKD.
1	1.0	2004-04-05	INITIAL RELEASE		

Verschlussplatte / LOCKING PLATE



Reparaturteil / RECYCLED MATERIAL: max 55%  
 Verschlussplatte für Abdeckkappe  
 mit links oder rechts Kabelführung /  
 LOCKING PLATE AVAILABLE FOR COVER  
 WITH LEFT OR RIGHT CABLE EXIT

REVISIONS	NO.	DATE	DESCRIPTION	BY	CHKD.
1	1.0	2004-04-05	INITIAL RELEASE		

Montagezustand / ASSEMBLY POSITION



Hebel / LEVER  
 Steckschleife / PIN CONNECTOR

REVISIONS	NO.	DATE	DESCRIPTION	BY	CHKD.
1	1.0	2004-04-05	INITIAL RELEASE		

Reparaturteil / RECYCLED MATERIAL: max 55%  
 Diese Typ-AMP-Zeichnung ersetzt EC-Zeichnung V2350-M075-1200...7427  
 THIS TYPE AMP-DRAWING REPLACES EC-DRAWING V2350-M075-1200...7427

• 1. Legen: DIN 9091-130, Winkel, Form und Lage: DIN ISO 2768 mH  
 LENGTH: DIN 9091-130, ANGLES, FORM AND POSITION: DIN ISO 2768 mH

REVISIONS	NO.	DATE	DESCRIPTION	BY	CHKD.
1	1.0	2004-04-05	INITIAL RELEASE		

