

4

3

2

1

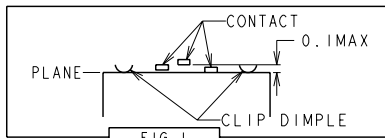
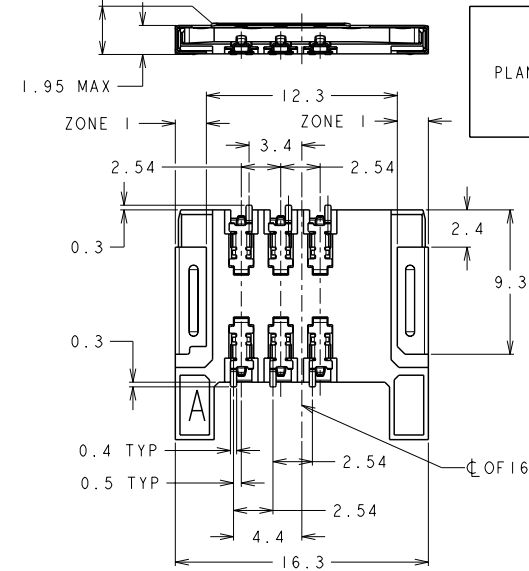
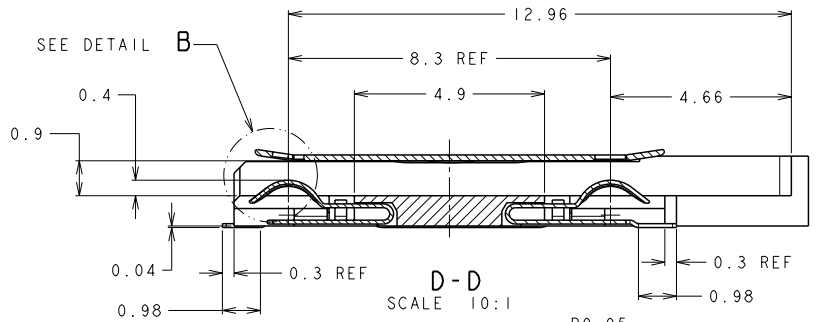
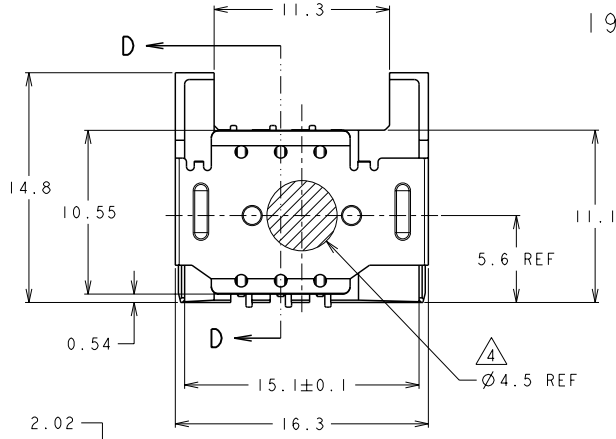
THIS DRAWING IS UNPUBLISHED. RELEASED FOR PUBLICATION
COPYRIGHT 20 BY TYCO ELECTRONICS CORPORATION. ALL RIGHTS RESERVED.

LOC ES DIST 00

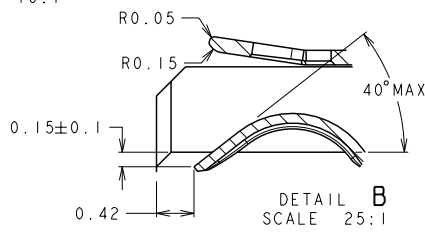
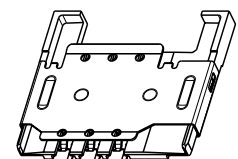
REVISIONS

P	LTR	DESCRIPTION	DATE	DWN	APVD
A		INITIAL RELEASE	04MAY2011	S.W	S.Y
B		REVISED	19JAN2012	S.W	S.Y

1932768-1: AS SHOWN



- 1. CONTACT: COPPER ALLOY
ALL OVER Ni: 1.27um MIN.
CONTACT AREA PdNi: 1.0um MIN. Au: 0.2um MIN.
SOLDERING AREA Au: 0.05um MIN.
- CLIP: SUS
ALL OVER Ni: 1.3um MIN.
Ti: 1um MIN(ZONE 1).
- HOUSING: THERMOPLASTIC
- 2. RECOMMENDED SOLDERING THICKNESS: 100um MIN.
RECOMMENDED SOLDERING AREA:
100% OF REFERENCE LAYOUT PATTERN
- 3. COPLANARITY: 0.1MAX. (SEE FIG.1)
REFERENCE PICK & PLACE AREA.



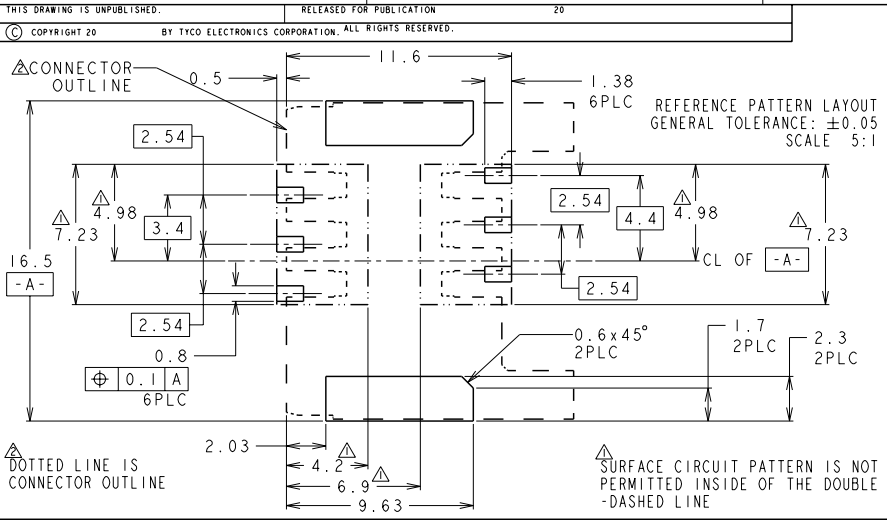
<small>THIS DRAWING IS A CONTROLLED DOCUMENT FOR TYCO ELECTRONICS CORPORATION IT IS SUBJECT TO CHANGE AND THE CONTROLLING ENGINEERING ORGANIZATION SHOULD BE CONTACTED FOR THE LATEST REVISION.</small>		DWN 3DEC2010 CHK Sabrina Wang APVD Wenke He PRODUCT SPEC Steven Yao APPLICATION SPEC 108-115024	TE Connectivity
DIMENSIONS: mm TOLERANCES UNLESS OTHERWISE SPECIFIED: ± 0.15 0-PLC ± 1-PLC ± 2-PLC ± 3-PLC ± 4-PLC ± ANGLES 45° MATERIAL FINISH	NAME SUPER LOW PROFILE SIM H=1.95 WITH FLANGE	SIZE CAGE CODE DRAWING NO A300779C-1932768	RESTRICTED TO
WEIGHT 0.46g CUSTOMER DRAWING		SCALE 4:1 SHEET 1 of 2 REV B	

4

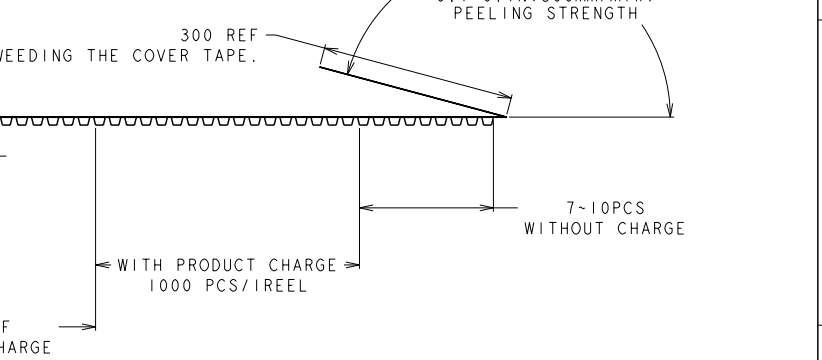
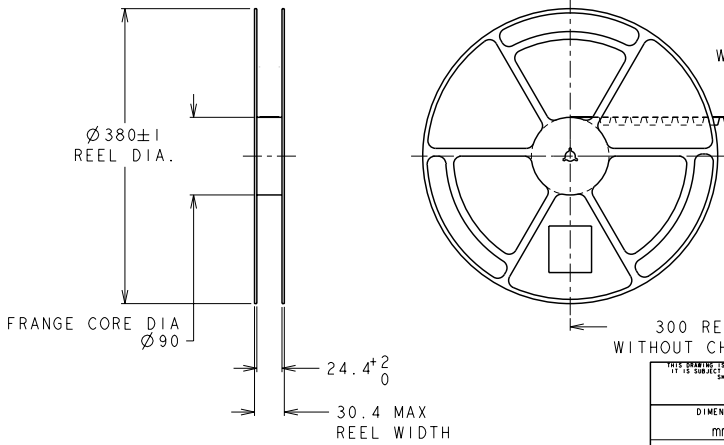
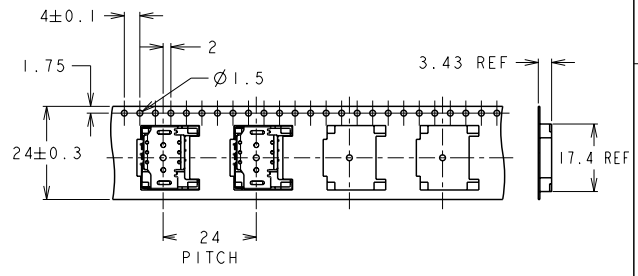
3

2

1



LOC	DIST	REVISIONS				
P	LTR	DESCRIPTION	DATE	DWN	APVD	
ES	00	SEE SHEET 1				



<small>THIS DRAWING IS A CONTROLLED DOCUMENT FOR TYCO ELECTRONICS CORPORATION IT IS SUBJECT TO CHANGE AND THE CONTROLLING ENGINEERING ORGANIZATION SHOULD BE CONTACTED FOR THE LATEST REVISION.</small>		DWN	TE Connectivity	NAME
DIMENSIONS:	TOLERANCES UNLESS OTHERWISE SPECIFIED:	CHK		PRODUCT SPEC
mm	± 0.15	APVD		APPLICATION SPEC
	0-PLC \pm 1-PLC \pm 2-PLC \pm 3-PLC \pm 4-PLC \pm	WEIGHT		SIZE
MATERIAL	FINISH	CUSTOMER DRAWING		CAGE CODE
	ANGLES		DRAWING NO	RESTRICTED TO
	45°		A300779C-1932768	
			SCALE	SHEET
			4:1	2 OF 2
				REV
				B

AMP 1470-19 REV 31MAR2000