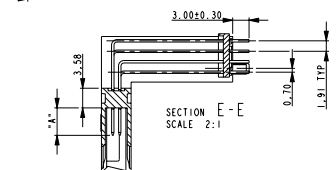
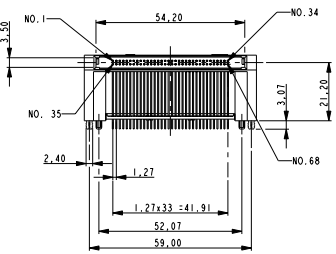
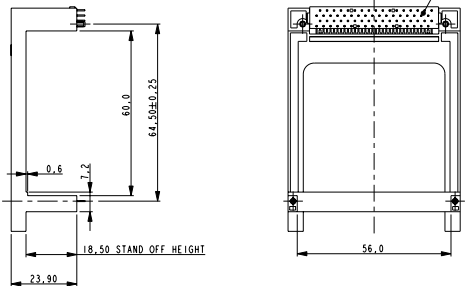
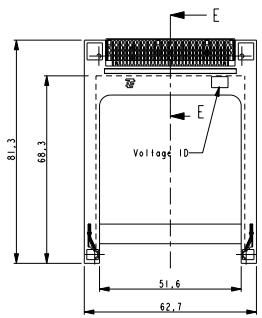


REV. NO.	DATE	BY	APPROVED
1	05JAN2012	GG	RRP



NOTES/SPECIFICATION:

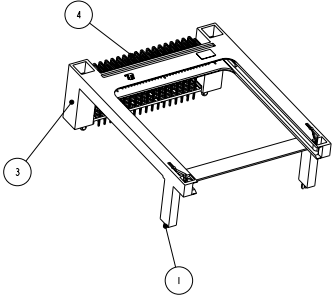
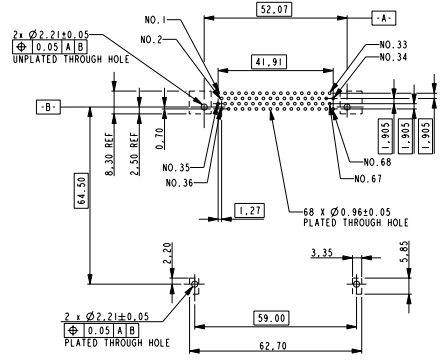
- HEADER ACCEPTS TYPES 1, 11, & 111 OF PCMCIA STANDARD MEMORY CARD
 - MECHANICAL SPECIFICATION:
 - DURABILITY
 - OFFICE ENVIRONMENT: 10000 CYCLES MINIMUM
 - HARSH ENVIRONMENT: 5000 CYCLES
 - CONTACT RETENTION FORCE: 1 kg MINIMUM
 - ELECTRICAL SPECIFICATION:
 - CONTACT RESISTANCE: 40 MILLI OHMS MAX.
 - DIELECTRIC WITHSTANDING VOLTAGE: 500 Vrms FOR 1min.
 - INSULATION RESISTANCE: 1000 MEGA OHMS MIN.
 - CURRENT CAPACITY: 0.5 AMPS PER PIN.
 - ENVIRONMENTAL SPECIFICATIONS:
 - STORAGE ENVIRONMENT: -40°C TO +70°C, 95% MAX. RELATIVE HUMIDITY (NON CONDENSING)
 - OPERATION TEMPERATURE: -20°C TO +60°C, 95% MAX. RELATIVE HUMIDITY (NON CONDENSING)
 - THERMAL SHOCK: 6 CYCLES (1 CYCLE PER HOUR) WITH CONNECTOR ENGAGED WITH EXTREMES OF -55°C TO +70°C.
 - LENGTH OF CONTACTS:

DIM "A"	POSITION No.
5	1,17,34,35,51,68
3,5	36,67
4,25	THE OTHERS
- △ PLATING OF CONTACT: Ni: 1.5µm MIN (OVERALL)
 Au: 0.03µm MIN. (CARD SIDE)
 TIN: 2µm MIN (PCB SIDE)
- 7 ALL PARTS PACKAGED IN TRAYS UNLESS REQUESTED:

CONNECTOR TO PRINTED CIRCUIT BOARD ASSEMBLY:

- PLACE THE CONNECTOR ON THE PRINTED CIRCUIT BOARD. THE SOLDER TAILS, RETENT CLIPS & PLASTIC LEGS SHOULD BE SEATED IN THE RESPECTIVE HOLES
- PUSH FIRMLY DOWN ON CENTER OF PLASTIC LEGS THEN SOLDER RETENTS. A SLIGHT SNAP IS FELT WHEN THE CONTACT IS FULLY SEATED.
- SOLDER PROCESS ENTIRE PRINTED CIRCUIT BOARD ASSEMBLY

RECOMMENDED PCB LAYOUT
 (THICKNESS: 1.60 mm±0.1mm)



LV	1857454-2	3.3V HEADER
5V	1857454-1	5V HEADER
VOLTAGE IDENTIFICATION	PARTNUMBER	HEADER TYPE
4	68	CONTACT
3	1	HOUSING
2	1	ORGANIZER
1	2	GROUND CONTACT
ITEM NO.	QTY	DESCRIPTION
		MATERIAL
		FINISH

THIS DRAWING IS A CONTROLLED DOCUMENT. SHRILVAISHA 18JAN06
 PREMJIITH 18JAN06
 E WILLEMS 18JAN06

ITE TE Connectivity

PC CARD CONNECTOR
 HIGH RAISED VERSION 18.5 mm

0	PLC	Ø0.3
1	PLC	Ø0.2
2	PLC	Ø0.1
3	PLC	Ø0.05
4	PLC	Ø0.05
5	PLC	Ø0.05
6	PLC	Ø0.05
7	PLC	Ø0.05
8	PLC	Ø0.05
9	PLC	Ø0.05
10	PLC	Ø0.05
11	PLC	Ø0.05
12	PLC	Ø0.05
13	PLC	Ø0.05
14	PLC	Ø0.05
15	PLC	Ø0.05
16	PLC	Ø0.05
17	PLC	Ø0.05
18	PLC	Ø0.05
19	PLC	Ø0.05
20	PLC	Ø0.05
21	PLC	Ø0.05
22	PLC	Ø0.05
23	PLC	Ø0.05
24	PLC	Ø0.05
25	PLC	Ø0.05
26	PLC	Ø0.05
27	PLC	Ø0.05
28	PLC	Ø0.05
29	PLC	Ø0.05
30	PLC	Ø0.05
31	PLC	Ø0.05
32	PLC	Ø0.05
33	PLC	Ø0.05
34	PLC	Ø0.05
35	PLC	Ø0.05
36	PLC	Ø0.05
37	PLC	Ø0.05
38	PLC	Ø0.05
39	PLC	Ø0.05
40	PLC	Ø0.05
41	PLC	Ø0.05
42	PLC	Ø0.05
43	PLC	Ø0.05
44	PLC	Ø0.05
45	PLC	Ø0.05
46	PLC	Ø0.05
47	PLC	Ø0.05
48	PLC	Ø0.05
49	PLC	Ø0.05
50	PLC	Ø0.05
51	PLC	Ø0.05
52	PLC	Ø0.05
53	PLC	Ø0.05
54	PLC	Ø0.05
55	PLC	Ø0.05
56	PLC	Ø0.05
57	PLC	Ø0.05
58	PLC	Ø0.05
59	PLC	Ø0.05
60	PLC	Ø0.05
61	PLC	Ø0.05
62	PLC	Ø0.05
63	PLC	Ø0.05
64	PLC	Ø0.05
65	PLC	Ø0.05
66	PLC	Ø0.05
67	PLC	Ø0.05
68	PLC	Ø0.05

MATERIAL: FINISH: WEIGHT: CUSTOMER DRAWING

SIZE: A2 CASE CODE: 00779 DRAWING NO: 1857454 RESTRICTED TO: -

SCALE: 1:1 SHEET: 1 OF 1 REV: C