

4

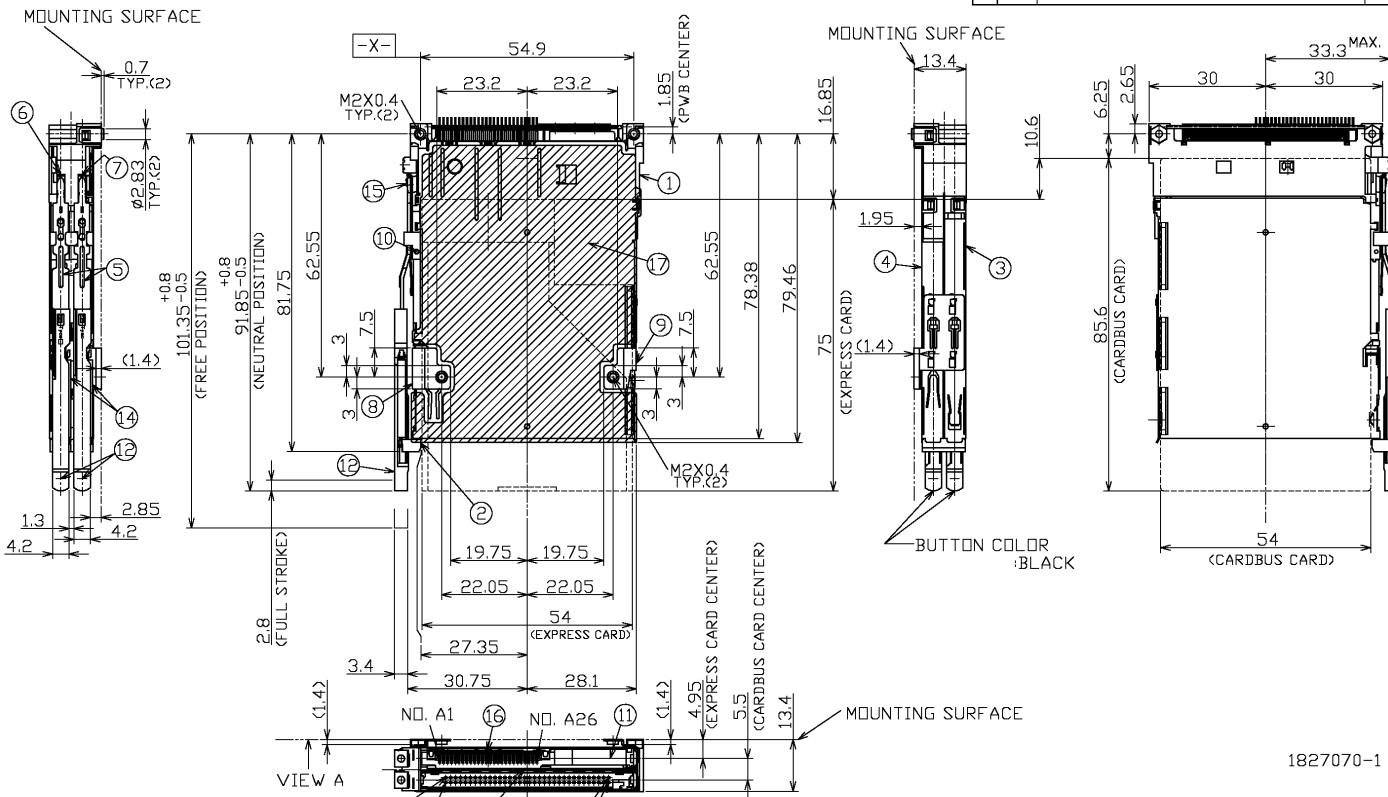
3

2

1

THIS DRAWING IS UNPUBLISHED. RELEASED FOR PUBLICATION  
 © COPYRIGHT BY TYCO ELECTRONICS CORPORATION. ALL RIGHTS RESERVED.

LOC	DIST	REVISIONS					
J		P	LTR	DESCRIPTION	DATE	DWN	APVD
		A		RELEASED	06JUL05	Y.W	Y.Y



THIS DRAWING IS A CONTROLLED DOCUMENT.		DWN	Y.WATANABE	27JUN05	Tyco Electronics AMP K.K. Kawasaki, Japan
DIMENSIONS: 単位: ㎜		CHK	K.YAMAGUCHI	06JUL05	
TOLERANCES UNLESS OTHERWISE SPECIFIED: 公差		APVD	Y.YAMAMOTO	06JUL05	NAME 名称
0 PLC ± 1 PLC ± 2 PLC ± 3 PLC ± 4 PLC ± ANGLES ±		PRODUCT SPEC 製品規格 103-78210 APPLICATION SPEC 応用規格		EXPRESS - CARBUS COMBO SLOT BOTTOM MOUNT TYPE PUSH-PUSH LEFT BUTTON	
MATERIAL 材料		SIZE	A3	CAGE CODE 番号	RESTRICTED 制限
FINISH 仕上		DRAWING NO	1827070		SCALE 尺度
		WEIGHT	46.35g		SHEET 1 of 5
		CUSTOMER DRAWING			REV A

AMP 1470-19 REV 31MAR2000

4

3

2

1

THIS DRAWING IS UNPUBLISHED. RELEASED FOR PUBLICATION

© COPYRIGHT BY TYCO ELECTRONICS CORPORATION. ALL RIGHTS RESERVED.

LOC	DIST	REVISIONS			
P	LTR	DESCRIPTION	DATE	DWN	APVD
—	—	—	—	—	—

## 注記

- 推奨ねじ締めトルク:  $0.15 \sim 0.2 \text{ Nm}$  ( $1.5 \sim 2 \text{ kgf} \cdot \text{cm}$ )
- ねじの締め付けの際は、インジェクタが基板から離れないように、ブラケットの下側を支えて下さい。
- 適応PCカード: PCMCIA準拠のPCカード。
- コネクタ実装エリア。(部品実装及びパターン禁止エリア)
- メタルパッド。
- 半田付けパッド。
- 部品実装禁止エリア。
- コネクタエリア。
- ねじ締め時のねじ押し付け力:  $14.7 \text{ N}$  ( $1.5 \text{ kgf}$ ) 以下。
- 一般公差:  $\pm 0.5, \pm 3^\circ$

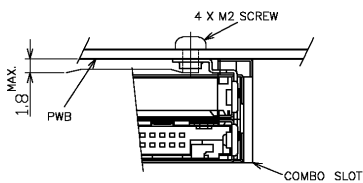
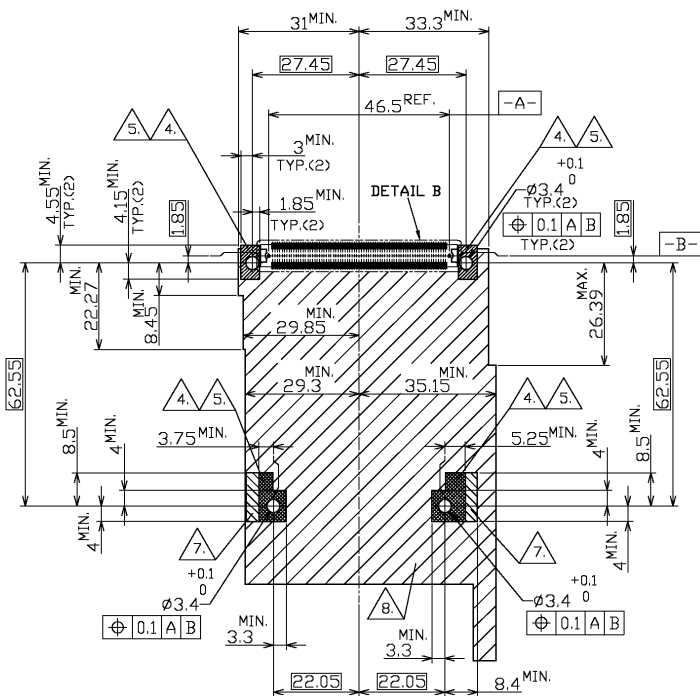
RECOMMENDED SCREW LENGTH  
SCALE 2:1VIEW A  
APPLICABLE P. C. BOARD LAYOUT  
(VIEW FROM CONNECTOR MOUNTING SIDE)

TABLE-1: CARDBUS PIN LENGTH

PIN LENGTH	5	3.5	4.25
CIRCUIT NO.	1,17,34 35,51,68	35,67	OTHER

THIS DRAWING IS A CONTROLLED DOCUMENT.

DIMENSIONS: 単位: 寸 mm		TOLERANCES UNLESS OTHERWISE SPECIFIED: 公差	
0 PLC	±	±	
1 PLC	±		
2 PLC	±		
3 PLC	±		
4 PLC	±		
ANGLES	±		
MATERIAL 材質		FINISH 仕上	

DWN	
CHK	
APVD	
PRODUCT SPEC 製品規格	
APPLICATION SPEC 取付適用規格	
WEIGHT	
CUSTOMER DRAWING	

**tyco**  
Electronics
Tyco Electronics AMP K.K.  
Kawasaki, Japan
 NAME  
名称  
EXPRESS - CARDBUS COMBO SLOT  
BOTTOM MOUNT TYPE  
PUSH-PUSH LEFT BUTTON

SIZE: A3 CAGE CODE: 00779 DRAWING NO.: 1827070 RESTRICTED TO

SCALE: 1:1 SHEET: 2 OF 5 REV: A

4

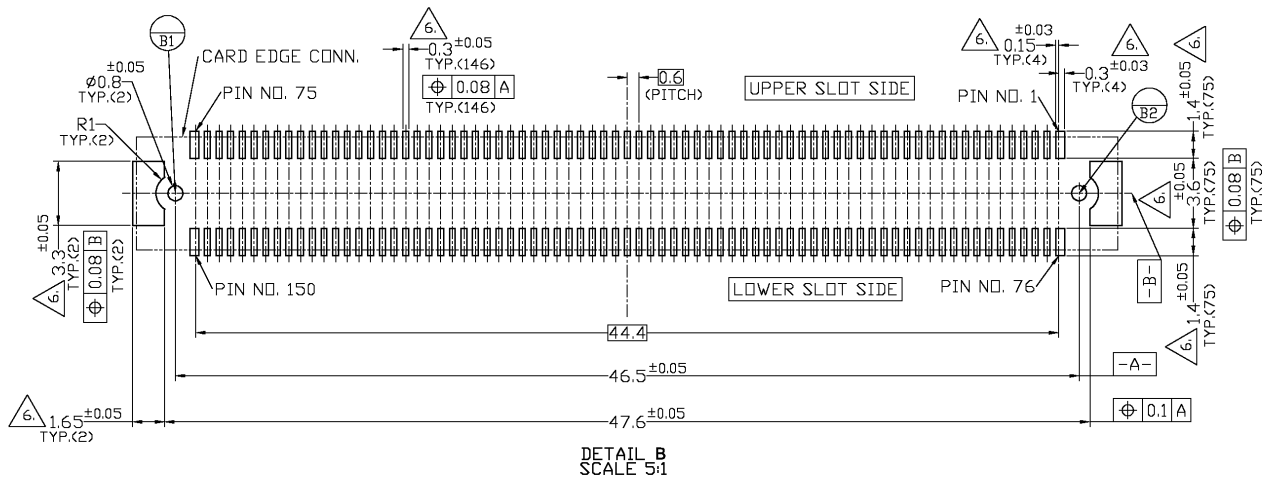
3

2

1

THIS DRAWING IS UNPUBLISHED. RELEASED FOR PUBLICATION  
 © COPYRIGHT BY TYCO ELECTRONICS CORPORATION. ALL RIGHTS RESERVED.

LOC	DIST	REVISIONS			
J		REV	DESCRIPTION	DATE	BY



0.6mm PITCH CARD EDGE CONNECTOR FOR THIS PRODUCT		
6123215-1	1123215-1	HARD TRAY
6376045-1	1376045-1	DN TAPING(EMBOSS)
LEAD-FREE	LEAD TYPE	DESCRIPTION
PART NUMBER		

THIS DRAWING IS A CONTROLLED DOCUMENT.		DWN		tyco Tyco Electronics AMP K.K.	
DIMENSIONS: 単位: 寸 mm		CHK		Electronics Kawasaki, Japan	
TOLERANCES UNLESS OTHERWISE SPECIFIED: 公差		APVD		NAME 名称	
0 PLC ±		PRODUCT SPEC 製品規格		EXPRESS - CARDBUS COMBO SLOT	
1 PLC ±		APPLICATION SPEC 応用規格		BOTTOM MOUNT TYPE	
2 PLC ±		WEIGHT		PUSH-PUSH LEFT BUTTON	
3 PLC ±		SIZE		RESTRICTED TO	
4 PLC ±		CAGE CODE		A3 00779	
ANGLES ±		DRAWING NO 番号		C=1827070	
FINISH 仕上		CUSTOMER DRAWING		SCALE 尺度 1:1	
		SHEET 3 OF 5		REV A	

4

3

2

1

THIS DRAWING IS UNPUBLISHED. RELEASED FOR PUBLICATION  
 © COPYRIGHT BY TYCO ELECTRONICS CORPORATION. ALL RIGHTS RESERVED.

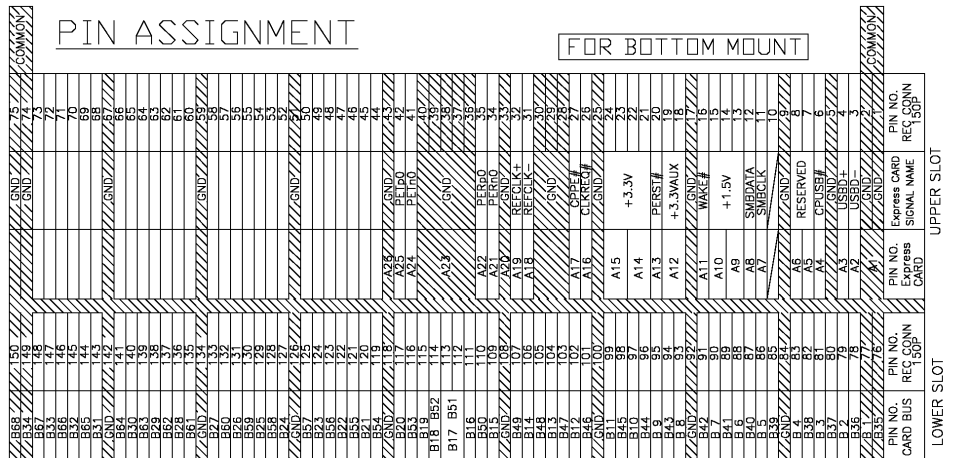
LOC	DIST	REVISIONS			
P	LTR	DESCRIPTION	DATE	DWN	APVD

NOTE

1. RECOMMENDED TIGHTENING TORQUE : 0.15~0.2Nm(1.5~2kgf・cm)
2. WHEN SCREW LOCK TO THE EJECTOR , PLEASE SUPPORT THE BOTTOM SIDE OF BRACKET AS SHOWN.
3. APPLIED CARD : PCMCIA ATTRIBUTE PC CARD.
4. CONNECTOR MOUNTING AREA. (NO COMPONENT AND NO SIGNAL LINE AREA)
5. METAL PAD.
6. SOLDERING PAD.
7. NO COMPONENT AREA.
8. CONNECTOR AREA.
9. THE AXIAL FORCE TO SCREW WHEN MOUNTING CARDBUS : 14.7N(1.5kgf)MAX.
10. GENERAL TOLERANCE : ±0.5 , ±3°

PIN ASSIGNMENT

FOR BOTTOM MOUNT



THIS DRAWING IS A CONTROLLED DOCUMENT.		DWN	tyco Tyco Electronics AMP K.K.	
DIMENSIONS: 単位: 寸 mm		CHK	Electronics Kawasaki, Japan	
TOLERANCES UNLESS OTHERWISE SPECIFIED: 寸公差		APVD	NAME 名称	
0 PLC ±		PRODUCT SPEC 製品規格	EXPRESS - CARDBUS COMBO SLOT	
1 PLC ±		APPLICATION SPEC 取付適用規格	BOTTOM MOUNT TYPE	
2 PLC ±		WEIGHT	PUSH-PUSH LEFT BUTTON	
3 PLC ±		CUSTOMER DRAWING	SIZE A3	CAGE CODE 00779
4 PLC ±			DRAWING NO 1827070	
FINISH 仕上			SCALE 1:1	SHEET 4 OF 5
				REV A

4

3


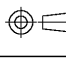
2

1

THIS DRAWING IS UNPUBLISHED. RELEASED FOR PUBLICATION  
 © COPYRIGHT - BY TYCO ELECTRONICS CORPORATION. ALL RIGHTS RESERVED.

LOC		DIST		REVISIONS			
				変更			
P	LTR	DESCRIPTION		DATE	DWN	APVD	
-	-			-	-	-	-

	POLYESTER	1	INSULATION SHEET	⑰
	STAINLESS STEEL	1	EXPRESS EJECT PLATE	⑯
	STAINLESS STEEL	1	EXPRESS ARM BAR	⑮
	STEEL	2	PUSH PLATE SPRING	⑭
	STAINLESS STEEL	1	MIDDLE SHELL	⑬
	THERMO PLASTIC	2	BUTTON (COLOR:BLACK)	⑫
	THERMO PLASTIC	1	EXPRESS GUIDE RAIL	⑪
	STAINLESS STEEL	1	SPRING PIN	⑩
	STAINLESS STEEL	1	BRACKET(W/O BUTTON SIDE)	⑨
	STAINLESS STEEL	1	BRACKET(BUTTON SIDE)	⑧
	STAINLESS STEEL & COPPER ARROY	1	EXPRESS PUSH PLATE ASSY(L)	⑦
	STAINLESS STEEL & COPPER ARROY	1	CARDBUS PUSH PLATE ASSY(L)	⑥
	STAINLESS STEEL	2	PUSH BAR	⑤
	STAINLESS STEEL	1	UPPER SHELL	④
	STAINLESS STEEL	1	LOWER SHELL	③
	THERMO PLASTIC	1	HOUSING ARM	②
NICKEL & TIN & GOLD	HIGH TEMPERATURE THERMO PLASTIC & COPPER ARROY & STAINLESS STEEL & GRASS-EPOX	1	HEADER MAIN ASSY	①
FINISH	MATERIAL	QTY	NAME	ITEM

THIS DRAWING IS A CONTROLLED DOCUMENT.		DWN	 Tyco Electronics AMP K.K. Kawasaki, Japan	
DIMENSIONS: 単位: 寸 mm	TOLERANCES UNLESS OTHERWISE SPECIFIED: 寸公差	CHK	NAME 名称	
	0 PLC ± -	APVD	EXPRESS - CARDBUS COMBO SLOT BOTTOM MOUNT TYPE PUSH-PUSH LEFT BUTTON	
	1 PLC ± -	PRODUCT SPEC 製品規格	SIZE	CAGE CODE
MATERIAL 材料	FINISH 仕上	APPLICATION SPEC 取付適用規格	A3	00779
		WEIGHT	DRAWING NO. 番号	
		CUSTOMER DRAWING	1827070	
			SCALE 尺度	1:1
			SHEET	5 of 5
			REV	A