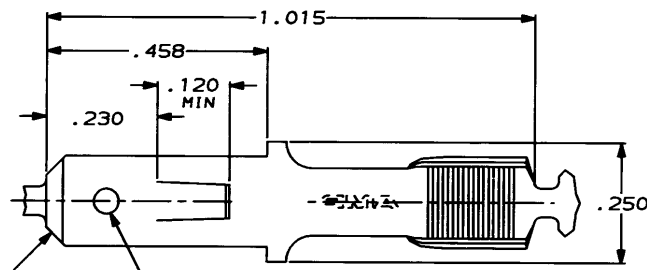


DRAWING MADE IN THIRD ANGLE PROJECTION

THIS DRAWING IS UNPUBLISHED. RELEASED FOR PUBLICATION, 19
 © COPYRIGHT 19 BY AMP INCORPORATED. ALL INTERNATIONAL RIGHTS RESERVED.

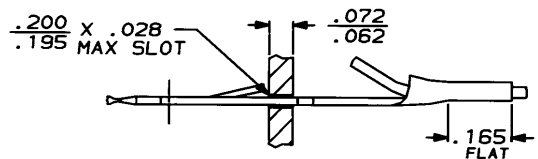
LOC		DIST		REVISIONS				DATE	APPD
AF	50	P	F	ZONE	LTR	DESCRIPTION			
					J	REVISED AF-8068	8/4/92	JR/JG	



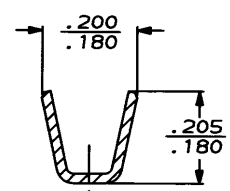
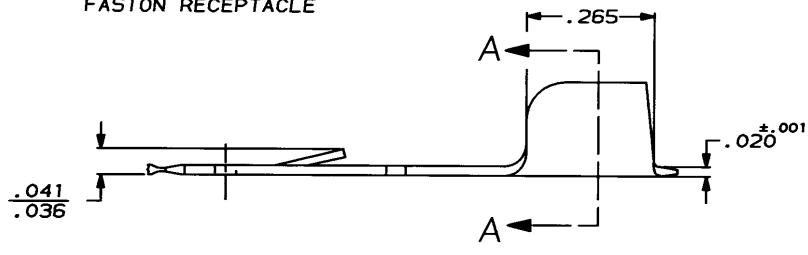
FITS .187 SERIES FASTON RECEPTACLE

.065 DIA HOLE
.059 DIA HOLE

1 CONTINUOUS STRIP ON REELS
 REVERSE REELING FROM 62445-2.



INSTALLED VIEW
PIGTAIL CRIMP



SECTION A-A

#15-12 MAGNET WIRE 3000 - 7000 CMA	TIN / VARNISH RESIST	62445-3
		62445-2
	TIN .000080 MIN	62445-1
WIRE SIZE	FINISH	PART NO

DO NOT SCALE PRINT. UNLESS SPECIFIED DIMENSIONS ARE IN INCHES TOLERANCES ON: 2 PLC DEC ± - 3 PLC DEC ± .015 ANGLES ± -	DR 11/7/91	AMP Incorporated Harrisburg, PA 17105-3608
	CHK 11/7/91	
MATERIAL H02 BRASS	APPD 11/7/91	NAME TAB, AMPLIVAR, FASTIN-FASTON, .187 SERIES
	PRODUCT SPEC	
FINISH SEE TABLE	APPD 11/7/91	SIZE B
	APPLICATION SPEC	CAGE CODE 00779
WEIGHT		DRAWING NO 62445
		SCALE 5:1
		SHEET 1 OF 1

CUSTOMER DRAWING

AMP 1470-15 REV 11-88
 AMP 1380 45720-80720-8020-4.105