

4

3

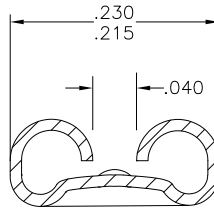
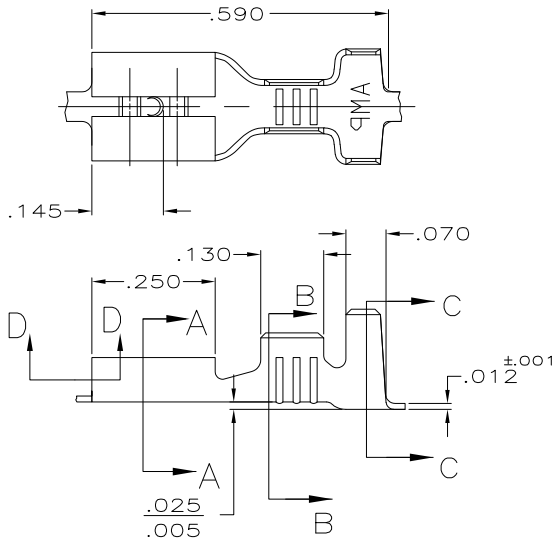
2

1

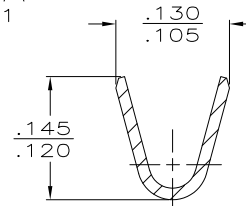
THIS DRAWING IS UNPUBLISHED. RELEASED FOR PUBLICATION  
 © COPYRIGHT - BY TYCO ELECTRONICS CORPORATION. ALL INTERNATIONAL RIGHTS RESERVED.

LOC	DIST	REVISIONS				
P	LTR	DESCRIPTION	DATE	DWN	APVD	
M2		REVISED PER ECR-09-009910	4/27/09	SS	PD	

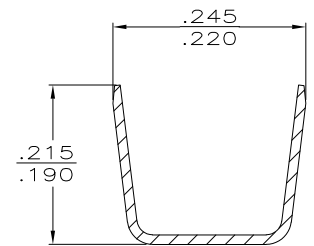
- 1 CONTINUOUS STRIP ON REELS
- 2 WIRE SIZE IS #18-#16 OR TWO #18'S.
- 3 INSULATION RANGE IS .105-.210 OR TWO AT .105 MAX.
- 4 MATING TAB THK IS .032±.001.



SECTION A-A  
SCALE 8:1



SECTION B-B  
SCALE 8:1



SECTION C-C  
SCALE 8:1

SWAGE ON  
61945-1 ONLY

SECTION D-D

.000150 MIN NICKEL	T2 STEEL	61945-2
.000080 MIN TIN	H04 BRASS	61945-1
FINISH	MATERIAL	PART NO.

F	.210	.188	F	.100	—	—
TYPE	WIDTH	STRIP LENGTH ±.015	TYPE	WIDTH	±.002 HEIGHT	WIRE
INSUL BARREL CRIMP			WIRE BARREL CRIMP			

THIS DRAWING IS A CONTROLLED DOCUMENT.

DIMENSIONS: INCHES	TOLERANCES UNLESS OTHERWISE SPECIFIED:
0 PLC	± -
1 PLC	± -
2 PLC	± -
3 PLC	± .015
4 PLC	± -
ANGLES	± -

MATERIAL: SEE TABLE  
FINISH: SEE TABLE

DWN: JR RUTH 8/21/91	Tyco Electronics	Tyco Electronics Corporation	
CHK: MS FEHER 8/21/91		Harrisburg, PA 17105-3608	
APVD: C MEYERS 8/21/91	NAME: —	RECEPTACLE, FASTON, .187 SERIES	
PRODUCT SPEC: —	SIZE: A3	CAGE CODE: 00779	DRAWING NO: 61945
APPLICATION SPEC: —	WEIGHT: —	RESTRICTED TO: —	
FINISH: —	CUSTOMER DRAWING		
	SCALE: 5:1	SHEET: 1 OF 1	REV: M2