

4

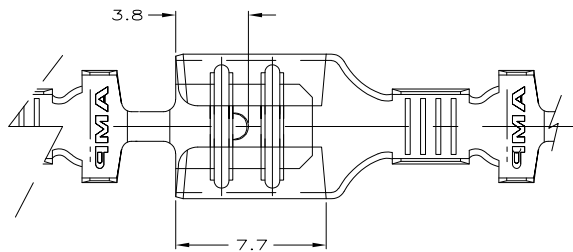
3

2

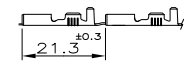
1

THIS DRAWING IS UNPUBLISHED. RELEASED FOR PUBLICATION
 © COPYRIGHT - By - ALL RIGHTS RESERVED.

LOC	DIST	REVISIONS			
P	LTR	DESCRIPTION	DATE	DWN	APVD
	AW7	REVISED PER ECO-11-005301	02MAR11	RK	HMR



1) STATO DI FORNITURA - SCALA 1:1
 (SUPPLY CONDITION - SCALE 1:1)

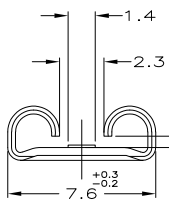


SENDO DI USCITA
 DEL TERMINALE
 DALLA BOBINA
 (DIRECTION OFF
 TOP OF REEL)

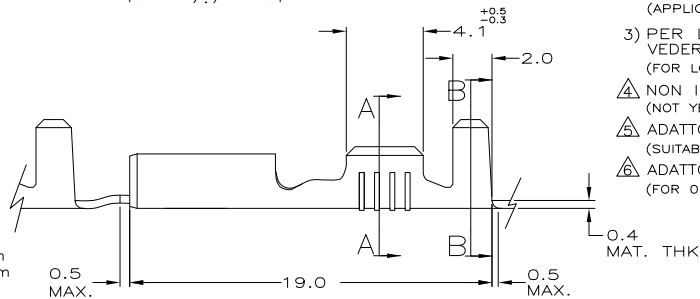
△ SPECIFICA DI PRODOTTO 108-20019
 (PRODUCT SPEC. 108-20019)
 △ SPECIFICA DI APPLICAZIONE 114-20023
 (APPLICATION SPEC. 114-20023).

3) PER LE VERSIONI IN PEZZI SCIOLTI
 VEDERE DISEGNO 160506
 (FOR LOOSE PIECE VERSION SEE DRAWING 160506).

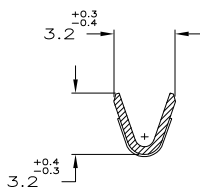
- △ NON IN PRODUZIONE
 (NOT YET RELEASE FOR PRODUCTION)
- △ ADATTO PER ALTA FORZA DI ESTRAZIONE
 (SUITABLE FOR HIGHER EXTRACTION FORCE)
- △ ADATTO PER TAB SPESSE 0.63mm.
 (FOR 0.63mm TAB THK.)



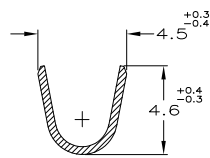
FOR 0.8mm
 & 0.63mm
 TAB THK.



SEZIONE A-A
 (SECTION A-A)



SEZIONE B-B
 (SECTION B-B)



△	STAGNATO (TINPLATED)	OTTONE (BRASS)	7-160432-3	AY
△	STAGNATO (TINPLATED)	OTTONE (BRASS)	7-160432-2	AW
△	NUDO (UNPLATED)	OTTONE (BRASS)	7-160432-1	AW
	STAGNATO (TINPLATED)	OTTONE (BRASS)	7-160432-0	AU
	NUDO (UNPLATED)	BRONZO FOSF.(PH. BRONZE)	6-160432-4	AU
	PRE NICHELATO(PRE NICKEL PLATED)	ACCIAIO (STEEL)	6-160432-3	AU
	STAGNATO (TINPLATED)	BRONZO FOSF.(PH. BRONZE)	6-160432-0	AU
	ARGENTATO (SILVER PLATED)	OTTONE (BRASS)	5-160432-7	AW
	STAGNATO (TINPLATED)	OTTONE (BRASS)	5-160432-4	AU
	NUDO (UNPLATED)	OTTONE (BRASS)	5-160432-3	AW
NOTE	FINITURA (FINISH)	MATERIALE (MATERIAL)	NUMERO (P/N)	REV

THIS DRAWING IS A CONTROLLED DOCUMENT.

DIMENSIONS:	TOLERANCES UNLESS OTHERWISE SPECIFIED:
mm	±0.3
0 PLC	±
1 PLC	±
2 PLC	±
3 PLC	±
4 PLC	±
ANGLES	± 2°
MATERIAL/MATERIALE	FINISH / FINITURA
SEE TABLE (VEDI LA TABELLA)	SEE TABLE (VEDI LA TABELLA)

DWN	14 MAY 99		FASTON® Connector .250 SERIES REC. CONTACT	RESTRICTED TO	
CHK	14 MAY 99				
APVD					
NAME					
PRODUCT SPEC		SIZE	CAGE CODE	DRAWING NO	
APPLICATION SPEC		A3	00779	C=160432	
WEIGHT		CUSTOMER DRAWING	SCALE	SHEET	1 OF 1
					REV AW7