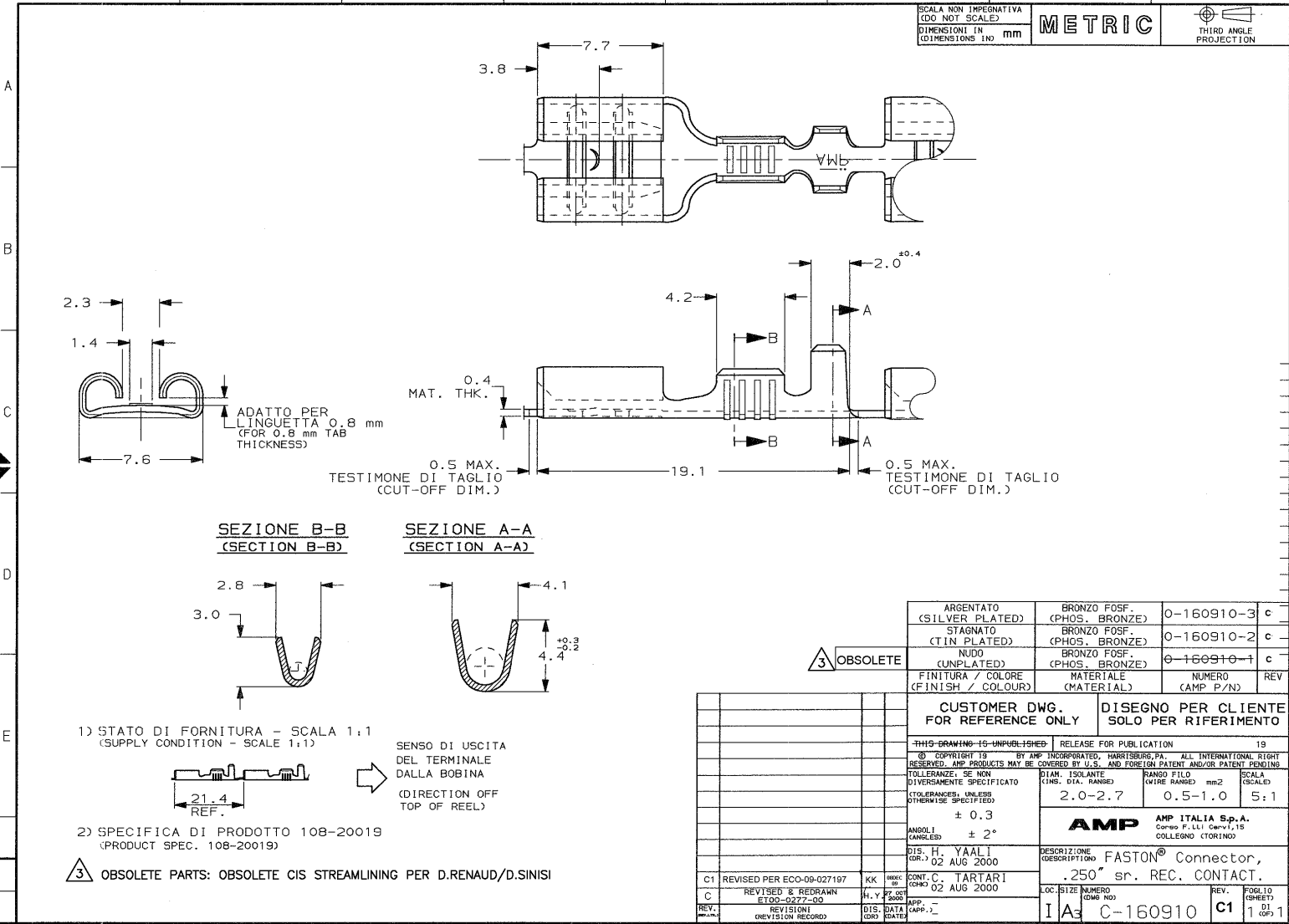


SCALA NON IMPERATIVA  
(DO NOT SCALE)  
DIMENSIONI IN mm  
DIMENSIONS IN mm

**METRIC**



**SEZIONE B-B**  
(SECTION B-B)

**SEZIONE A-A**  
(SECTION A-A)

**3 OBSOLETE**

ARGENTATO (SILVER PLATED)	BRONZO FOSF. (PHOS. BRONZE)	0-160910-3	c
STAGNATO (TIN PLATED)	BRONZO FOSF. (PHOS. BRONZE)	0-160910-2	c
NUDO (UNPLATED)	BRONZO FOSF. (PHOS. BRONZE)	0-160910-1	c
FINITURA / COLORE (FINISH / COLOUR)	MATERIALE (MATERIAL)	NUMERO (AMP P/N)	REV

**CUSTOMER DWG. FOR REFERENCE ONLY**      **DISEGNO PER CLIENTE SOLO PER RIFERIMENTO**

THIS DRAWING IS UNPUBLISHED      RELEASE FOR PUBLICATION 19

© COPYRIGHT 19 BY AMP INCORPORATED, HARRISBURG, PA. ALL INTERNATIONAL RIGHT RESERVED. AMP PRODUCTS MAY BE COVERED BY U.S. AND FOREIGN PATENT AND/OR PATENT PENDING

TOLLERANZE, SE NON DIVERSAMENTE SPECIFICATO      DIAM. ISOLANTE (INS. DIA. RANGE)      RANGO FILO (WIRE RANGE)      SCALA (SCALE)

± 0.3      2.0-2.7      0.5-1.0      5:1

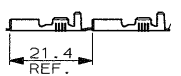
**AMP**      **AMP ITALIA S.p.A.**  
Compo F.LLI. Cera, 1, 15  
COLLEGA (TORINO)

DESCRIZIONE (DESCRIPTION)      **FASTON® Connector, .250" sr. REC. CONTACT.**

C1	REVISED PER ECO-09-027197	KK	REV. 02	CONT. C. TARTARI	REV. 02
C	REVISED & REDRAWN ETOO-0277-00	H.Y.	2002	DIS. DATA	02 AUG 2000
REV.	REVISIONI (REVISION RECORD)	DIS.	DATA (DATE)	APP. (APP.)	

LOC. SIZE NUMERO (QMG NO)      I A3      C-160910      REV. C1      F08/10 (SHEET) 1 OF 1

1) STATO DI FORNITURA - SCALA 1:1  
(SUPPLY CONDITION - SCALE 1:1)



2) SPECIFICA DI PRODOTTO 108-20019  
(PRODUCT SPEC. 108-20019)

SENSO DI USCITA DEL TERMINALE DALLA BOBINA  
(DIRECTION OFF TOP OF REEL)

**3 OBSOLETE PARTS: OBSOLETE CIS STREAMLINING PER D.RENAUD/D.SINISI**

REGISTRATION CURRENT DESIGN