

4

3

2

1

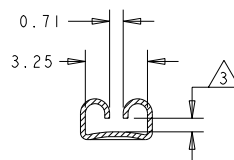
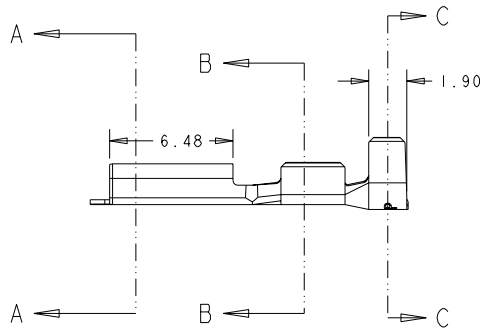
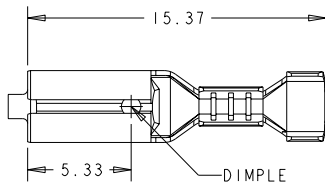
THIS DRAWING IS UNPUBLISHED.

RELEASED FOR PUBLICATION 20

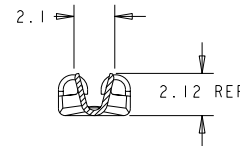
© COPYRIGHT 20

ALL RIGHTS RESERVED.

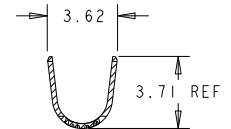
LOC	DIST	REVISIONS				
P	LTR	DESCRIPTION	DATE	DWN	APVD	
L1		ECR-10-00004	01JAN10	RK	SRE	
L2		L.P VERSION INFO ADDED	25MAY2011	PKS	RRP	



SECTION A-A



SECTION B-B



SECTION C-C

NOTES:

- 1. WIRE SIZE: 0.2 - 0.56mm²
- 2. INSULATION DIAMETER: 2.0 - 3.0mm
- 3 TO SUIT 0.50mm THICK TAB

		NONE	NICKEL SILVER	150500-8
	SPLICE FREE	ELECTRO TIN	BRASS	150500-7
150205-6		NONE	PHOS BRONZE	150500-6
150205-5		SILVER PLATED	BRASS	150500-5
150205-4		PRE-TIN	BRASS	150500-4
150205-3		GOLD PLATED	BRASS	150500-3
150205-2		ELECTRO TIN	BRASS	150500-2
150205-1		NONE	BRASS	150500-1
L.P P/N	REELING	FINISH	MATERIAL	PART NO

THIS DRAWING IS A CONTROLLED DOCUMENT.

DIMENSIONS: mm	TOLERANCES UNLESS OTHERWISE SPECIFIED: 0 PLC ±0.5 1 PLC ±0.5 2 PLC ±0.5 3 PLC ±0.5 4 PLC ± ANGLES ±2	OWN M. GREENER 15JUN2007 CHK J. AMBROSE 15JUN2007 APVD J. AMBROSE 15JUN2007	TE Connectivity	
		PRODUCT SPEC 108-20020	NAME .110 SERIES MINIATURE FASTON RECEPTACLE	
MATERIAL SEE TABLE	FINISH SEE TABLE	APPLICATION SPEC 114-2036	SIZE A3	CAGE CODE 00779
		WEIGHT -	DRAWING NO C-150500	RESTRICTED TO -
CUSTOMER DRAWING			SCALE NTS	SHEET 1 OF 1 REV L2