

4

3

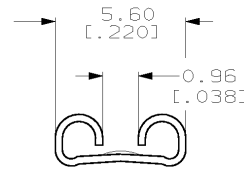
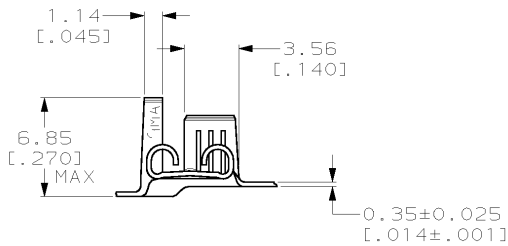
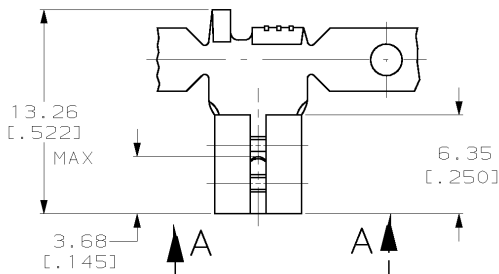
2

1

THIS DRAWING IS UNPUBLISHED. RELEASED FOR PUBLICATION .19
 © COPYRIGHT 19 BY AMP INCORPORATED. ALL RIGHTS RESERVED.

LOC	DIST	REVISIONS			
P	LTR	DESCRIPTION	DATE	DWN	APVD
E		REV PER 063A-0113-02	01MAR02	JR	PD

- 1 CONTINUOUS STRIP ON REELS.
- 2 FEED IS 16.51 ± 0.076 [.650 ± .005].
- 3 ACCEPTS WIRE SIZE [#20-#16] AWG.
- 4 INSULATION RANGE TO BE 2.29-3.30 [.090-.130] DIA.
- 5 MATING TAB THK TO BE 0.406 ± 0.025 [.020 ± .001].



VIEW A-A
SCALE 6:1

0.002032 [.000080] MIN TIN	1217009-2
-	1217009-1
FINISH	PART NO.

THIS DRAWING IS A CONTROLLED DOCUMENT FOR AMP INCORPORATED. IT IS SUBJECT TO CHANGE AND THE CONTROLLING ENGINEERING ORGANIZATION SHOULD BE CONTACTED FOR THE LATEST REVISION.		DWN	JR RUTH	8/22/97	AMP AMP Incorporated Harrisburg, PA 17105-3608
DIMENSIONS: MM (INCHES)		CHK	MS FEHER	8/22/97	
TOLERANCES UNLESS OTHERWISE SPECIFIED:		APVD	P. DESANTIS	8/22/97	NAME
0 PLC	±-	PRODUCT SPEC		RECEPTACLE, FASTON, FLAG, 4.75 [.187] SERIES	
1 PLC	±-	APPLICATION SPEC		SIZE	CAGE CODE
2 PLC	±0.25 (.010)	WEIGHT		A3	00779
3 PLC	±-	CUSTOMER DRAWING		DRAWING NO	
4 PLC	±-			SCALE 4:1 SHEET 1 OF 1 REV E	
ANGLES	±-				
MATERIAL	H04 BRASS	FINISH		SEE TABLE	

AMP 1470-19 REV 09MAY94

16-OCT-00 12:25:11 amp13469 /home/amp13469/edmod