

4

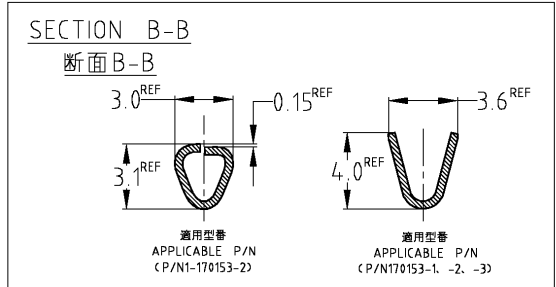
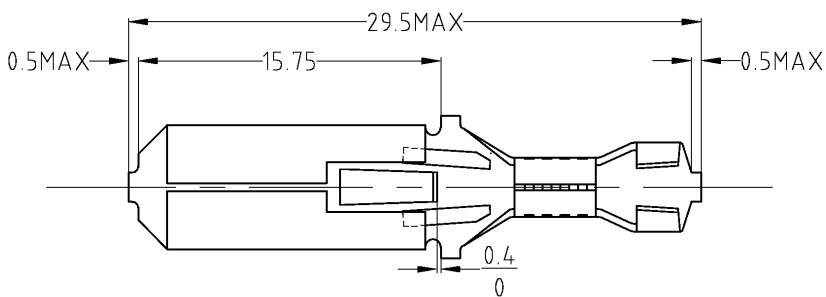
3

2

1

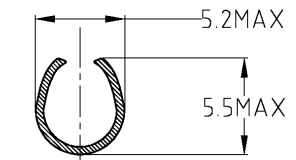
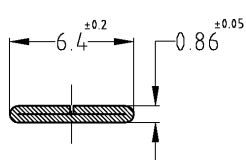
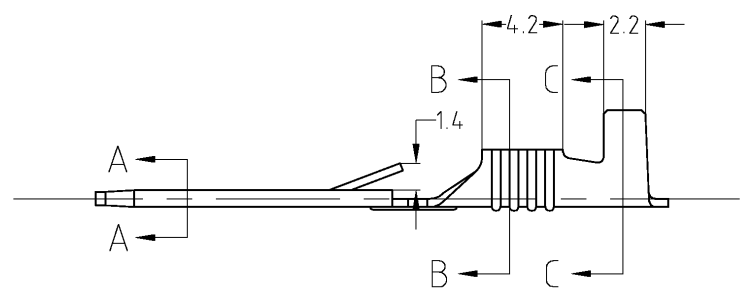
THIS DRAWING IS UNPUBLISHED. RELEASED FOR PUBLICATION
 COPYRIGHT - ALL RIGHTS RESERVED.

LOC		DIST		REVISIONS				
J		-		変更		DATE	DWN	APVD
P	LTR	DESCRIPTION				DATE	DWN	APVD
C1		REVISED PER ECO-11-005030				23MAR11	RK	HMR



- 注)
 1. 適用電線 : AWG18 - AWG14 (0.75~2.27)
 2. 適用被覆外径 : $\phi 3.1 \sim 4.1\text{MM}$

- NOTE)
 1. APPLICABLE WIRE SIZE
 : AWG18 - AWG14 (0.75~2.27)
 2. APPLICABLE WIRE INSULATION
 : $\phi 3.1 \sim 4.1\text{MM}$



	編めつき済み黄銅 0.41t PRE-TIN BRASS 0.41t	170151-2	1-170153-2
	黄銅 0.41t TIN-PLATE BRASS 0.41t	170151-3	170153-3
	編めつき済み黄銅 0.41t PRE-TIN BRASS 0.41t	170151-2	170153-2
	黄銅 0.41t BRASS 0.41t	170151-1	170153-1
仕上り FINISH	材 料 MATERIAL	建線状端子型番 STRIP CONTACT P/N	パラ状端子型番 LP CONTACT P/N

THIS DRAWING IS A CONTROLLED DOCUMENT.

DIMENSIONS: 単位: 精 mm	TOLERANCES UNLESS OTHERWISE SPECIFIED: 一般公差	DWN J.HOSHIBA 020CT06			
	0 PLC ±0.4 1 PLC ± 2 PLC ± 3 PLC ± 4 PLC ± ANGLES ±1.0	CHK N.YAMASAKI 16FEB'07			
MATERIAL 材料	FINISH 仕上	APVD N.YAMASAKI 16FEB'07	NAME 名称	250 SERIES FASTIN FASTON TAB(LP)	
SEE TABLE	SEE TABLE	PRODUCT SPEC 製品規格 108-5048	SIZE 寸法	CAGE CODE A300779	DRAWING NO 番号 170153
CUSTOMER DRAWING		WEIGHT	RESTRICTED TO	SCALE 尺度	5:1
		SHEET		1 of 1	REV C1