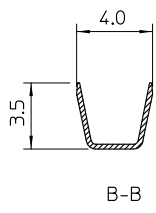
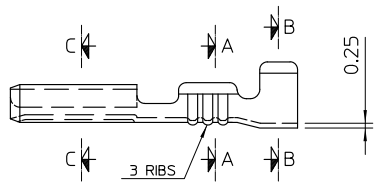
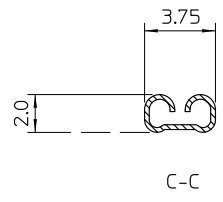
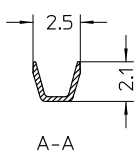
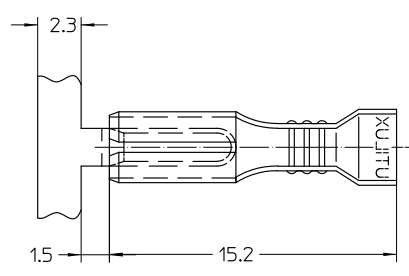


THIS DRAWING IS UNPUBLISHED. RELEASED FOR PUBLICATION
 © COPYRIGHT BY TYCO ELECTRONICS CORPORATION. ALL RIGHTS RESERVED.

| LOC | | DIST | | REVISIONS | | | |
|-----|-----|-------------|------|-----------|------|--|--|
| P | LTR | DESCRIPTION | DATE | DWN | APVD | | |
| | | | | | | | |

NOTES:
 1. WIRE RANGE
 CONDUCTOR: 0.3mm² - 0.75mm²
 INSULATION DIA: 2.6mm MAX.
 2. FOR CRIMPING DETAILS REFER
 TO UTILUX CRIMP CHART NO. H25031



THIS INFORMATION IS CONFIDENTIAL AND PROPRIETARY TO TYCO ELECTRONICS CORPORATION AND IS NOT TO BE RELEASED TO ANYONE OTHER THAN TYCO ELECTRONICS CORPORATION, HARRISBURG, PENNSYLVANIA, USA.

| | | |
|---------------|-------------------|-------------|
| BRASS PRE-TIN | RECEPTACLE H25031 | 1-1627081-0 |
| MATERIAL | DESCRIPTION | PART No. |

| | |
|--|--|
| THIS DRAWING IS A CONTROLLED DOCUMENT. | |
| ALL DIMENSIONS IN mm | TOLERANCES UNLESS OTHERWISE SPECIFIED: |
| | DIMENSION (mm) TOLERANCE (+/-mm) |
| | LESS THAN 10 0.4 |
| | OVER 10 TO 30 0.5 |
| | OVER 30 TO 80 0.7 |
| | OVER 80 TO 250 1.0 |
| | ANGLES 42° |
| MATERIAL | FINISH |
| - | - |

| |
|-----------------------|
| DWN: W.RIEDE 9.11.04 |
| CHK: H.THAI 9.11.04 |
| APVD: W.RIEDE 9.11.04 |
| PRODUCT SPEC: - |
| APPLICATION SPEC: - |
| WEIGHT: - |

| | | | |
|---|--------------|---------------------|--------------------|
| Tyco Electronics Corporation AUSTRALIA | | | |
| NAME: RECEPTACLE QC 2.8 x 0.8 | | | |
| SIZE: A3 | CAGE CODE: - | DRAWING NO: 1627081 | RESTRICTED TO: - |
| CUSTOMER DRAWING | | SCALE: 5:1 | SHEET 1 OF 1 REV 0 |

