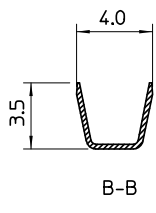
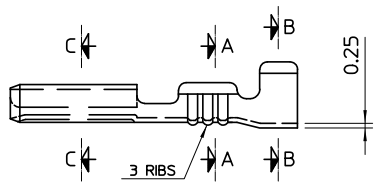
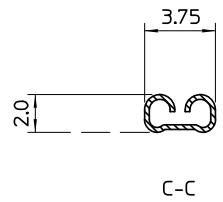
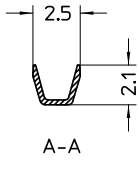
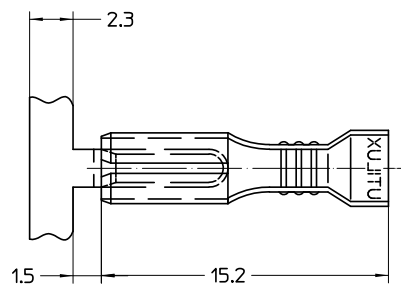


THIS DRAWING IS UNPUBLISHED. RELEASED FOR PUBLICATION
 COPYRIGHT BY TYCO ELECTRONICS CORPORATION. ALL RIGHTS RESERVED.

LOC		DIST		REVISIONS			
P	LTR	DESCRIPTION	DATE	DWN	APVD		
U	-						

NOTES:
 1. WIRE RANGE
 CONDUCTOR: 0.3mm² - 0.75mm²
 INSULATION DIA: 2.6mm MAX.
 2. FOR CRIMPING DETAILS REFER
 TO UTILUX CRIMP CHART NO. H25025



THIS INFORMATION IS CONFIDENTIAL AND PROPRIETARY TO TYCO ELECTRONICS CORPORATION AND IS NOT TO BE DISCLOSED TO ANY OTHER PARTY WITHOUT THE WRITTEN PERMISSION OF TYCO ELECTRONICS CORPORATION.

BRASS PRE-TIN	RECEPTACLE H25025	1-1627080-0
MATERIAL	DESCRIPTION	PART No.

THIS DRAWING IS A CONTROLLED DOCUMENT.		DWN: W.JRIEDE 9-11.04	Tyco Electronics Corporation AUSTRALIA	
ALL DIMENSIONS IN mm		CHK: H.THAI 9-11.04		
TOLERANCES UNLESS OTHERWISE SPECIFIED: DIMENSION (mm) TOLERANCE (mm) LESS THAN 10 0.4 OVER 10 TO 30 0.5 OVER 30 TO 80 0.7 OVER 80 TO 250 1.0 ANGLES 42°		APVD: W.JRIEDE 9-11.04	NAME: RECEPTACLE QC 2.8 x 0.5	
UNREELING DIRECTION FROM TOP OF REEL 		PRODUCT SPEC: -	SIZE: A3	DRAWING NO: 1627080
MATERIAL: -		APPLICATION SPEC: -	WEIGHT: -	RESTRICTED TO: -
FINISH: -		CUSTOMER DRAWING		
		SCALE: 5:1	SHEET: 1 OF 1	REV: 0