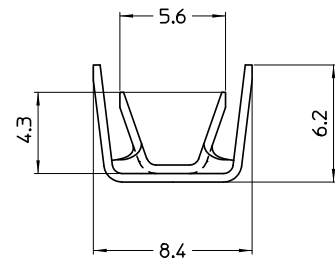
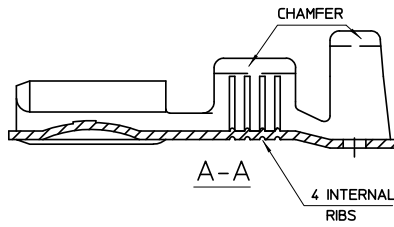
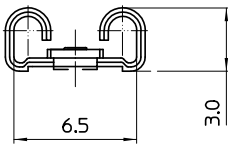
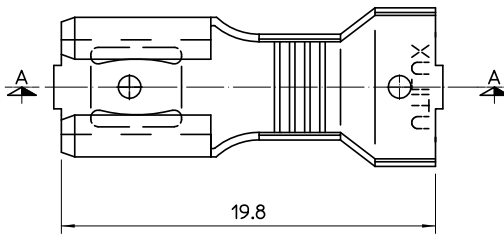


THIS DRAWING IS UNPUBLISHED. RELEASED FOR PUBLICATION
 © COPYRIGHT BY TYCO ELECTRONICS CORPORATION. ALL RIGHTS RESERVED.

LOC		DIST		REVISIONS			
P	LTR	DESCRIPTION	DATE	DWN	APVD		
U	-						

NOTES:

- WIRE RANGE
 CONDUCTOR: 2 x 0.75mm² - 2x 1.5mm²
 INSULATION DIA: 2.4mm - 3.2mm
- FOR CRIMPING DETAILS REFER
 UTILUX CRIMP CHART No. H1973



NICKEL SILVER	RECEPTACLE H1973B	1-1627058-4
BRASS PRE-TIN	RECEPTACLE H1973ET	1-1627058-3
BRASS	RECEPTACLE H1973	1-1627058-1
MATERIAL	DESCRIPTION	PART No.

THIS INFORMATION IS CONFIDENTIAL AND PROPRIETARY TO TYCO ELECTRONICS CORPORATION AND IS NOT TO BE DISCLOSED TO ANY OTHER PARTY WITHOUT THE WRITTEN PERMISSION OF TYCO ELECTRONICS CORPORATION. INFORMATION, PERTAINING TO: COMPANY, PRODUCT, PERFORMANCE, FINISH, MATERIAL, etc.

THIS DRAWING IS A CONTROLLED DOCUMENT.

ALL DIMENSIONS IN mm		TOLERANCES UNLESS OTHERWISE SPECIFIED:	
DIMENSION (mm)	TOLERANCE (mm)	DIMENSION (mm)	TOLERANCE (mm)
LESS THAN 30	0.4	OVER 30 TO 80	0.5
OVER 30 TO 80	0.7	OVER 80 TO 250	1.0
ANGLES	+3°		

MATERIAL	FINISH
-	-

DWN	W.RIEDE 29.10.04
CHK	H.THAI 29.10.04
APVD	W.RIEDE 29.10.04
PRODUCT SPEC	-
APPLICATION SPEC	-
WEIGHT	-

Tyco Electronics Corporation AUSTRALIA	
NAME: RECEPTACLE, Q.C.6.3	
SIZE	CAGE CODE DRAWING NO
A3	1627058
RESTRICTED TO	
CUSTOMER DRAWING	
SCALE	SHEET OF REV
5:1	1 OF 1 0

