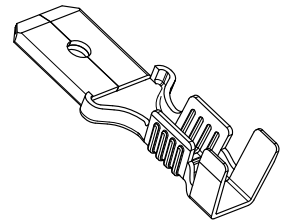
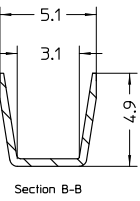
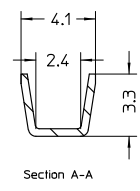
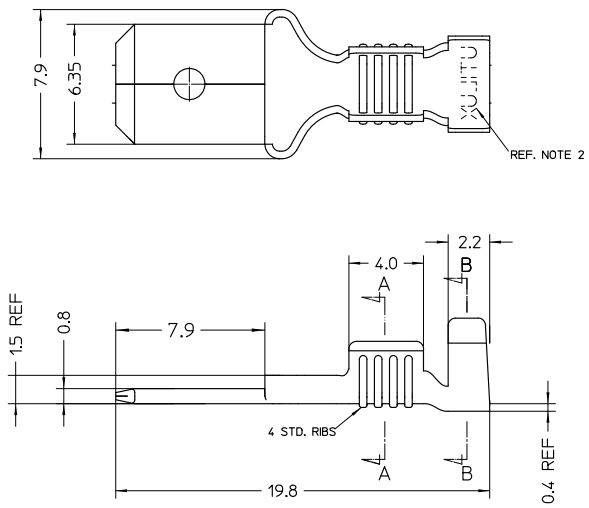
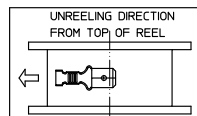


THIS DRAWING IS UNPUBLISHED. RELEASED FOR PUBLICATION
 © COPYRIGHT BY TYCO ELECTRONICS CORPORATION. ALL RIGHTS RESERVED.

LOC		DIST		REVISIONS			
P	LTR	DESCRIPTION		DATE	DWN	APVD	
0		RE-DRAWN WAS UTILUX 01.01192.01		-	-	-	



- NOTES:**
- THIS PRODUCT IS UL APPROVED.
 - 'UTILUX' OR 'AMP' LOGO STAMPED AS REQUIRED.
 - WIRE RANGE
 CONDUCTOR: 0.70mm² - 1.5mm²
 INSULATION DIA: 2.4mm - 2.9mm



ELECTRO-TIN	BRASS	TAB QC 6.3 (H1192-ET)	1-1627025-2
NATURAL	NICKEL SILVER	TAB QC 6.3 (H1192-B)	1-1627025-1
NATURAL	BRASS	TAB QC 6.3 (H1192)	1-1627025-0
FINISH	MATERIAL	DESCRIPTION (UTILUX P/N)	PART No.
THIS DRAWING IS A CONTROLLED DOCUMENT.		DWN: H.THAI 11.2.03	Tyco Electronics Corporation AUSTRALIA
ALL DIMENSIONS IN mm		CHK: W.RIEDE 11.2.03	
TOLERANCES UNLESS OTHERWISE SPECIFIED: DIMENSION (mm) TOLERANCE (mm) LESS THAN 30 0.4 OVER 30 TO 80 0.5 OVER 80 TO 250 0.7 OVER 250 TO 500 1.0 ANGLES 12°		APVD: P.TIMBRELL 11.2.03	
		PRODUCT SPEC:	NAME: TAB QC 6.3
MATERIAL: REF. BLOCK	FINISH: REF. BLOCK	APPLICATION SPEC:	RESTRICTED TO
		WEIGHT: -	SIZE: A3
		DRAWING NO: 1627025	
		CUSTOMER DRAWING	
		SCALE: 5:1	SHEET 1 OF 1
		REV 0	

THIS INFORMATION IS CONFIDENTIAL AND PROPRIETARY TO TYCO ELECTRONICS CORPORATION AND IS NOT TO BE RELEASED TO ANY OTHER PARTY WITHOUT THE WRITTEN PERMISSION OF TYCO ELECTRONICS CORPORATION. HARRISBURG, PENNSYLVANIA, USA.