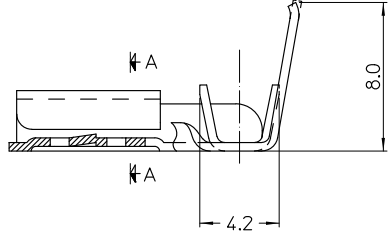
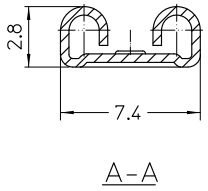
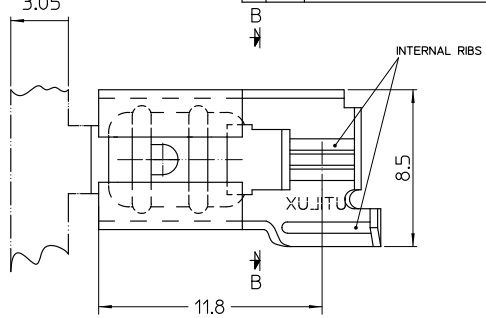
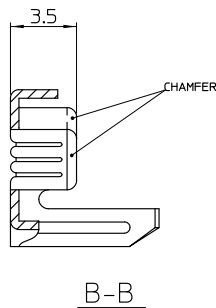


THIS DRAWING IS UNPUBLISHED. RELEASED FOR PUBLICATION
 COPYRIGHT BY TYCO ELECTRONICS CORPORATION. ALL RIGHTS RESERVED.

LOC	DIST	REVISIONS			
P	LTR	DESCRIPTION	DATE	DWN	APVD
-	-				



- NOTES:
- WIRE RANGE
 CONDUCTOR: 0.6mm² - 1.5mm²
 INSULATION DIA: 2.2mm - 2.8mm
 - THIS PRODUCT IS UL LISTED
 - FOR CRIMPING DETAILS REFER TO UTILUX CRIMP CHART NO. H1191
 - MATING INSULATOR PART No. 1-1659318-0, 1-1627128-1, 1-1659283-0

BRASS PRE-TIN	RECEPTACLE H1191ET	1-1627024-5
NICKEL SILVER	RECEPTACLE H1191B	1-1627024-2
BRASS	RECEPTACLE H1191	1-1627024-1
MATERIAL	DESCRIPTION	PART No.

THIS DRAWING IS A CONTROLLED DOCUMENT.		DWN: W,RIEDE 25.10.04	Tyco Electronics Corporation AUSTRALIA	
ALL DIMENSIONS IN mm		CHK: H,THAI 25.10.04		
TOLERANCES UNLESS OTHERWISE SPECIFIED:		APVD: W,RIEDE 25.10.04	NAME: RECEPTACLE, FLAG QC 6.3	
DIMENSION (mm) TOLERANCE(+/-mm) LESS THAN 10 0.4 OVER 10 TO 30 0.5 OVER 30 TO 80 0.7 OVER 80 TO 250 1.0 ANGLES 42°		PRODUCT SPEC: -		
MATERIAL: -		FINISH: -	SIZE: A3	CAGE CODE: -
UNREELING DIRECTION FROM TOP OF REEL		DRAWING NO: 1627024		RESTRICTED TO: -
CUSTOMER DRAWING			SCALE: 1:1	SHEET 1 OF 1 REV 0

THIS INFORMATION IS CONFIDENTIAL AND PROPRIETARY TO TYCO ELECTRONICS CORPORATION AND IS TO BE RELEASED TO ANYONE OTHER THAN TYCO ELECTRONICS CORPORATION, HARRISBURG, PENNSYLVANIA, USA.