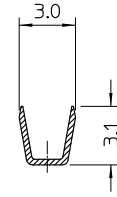
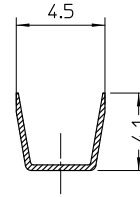
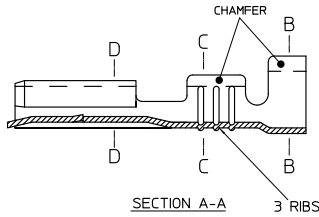
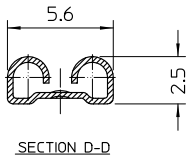
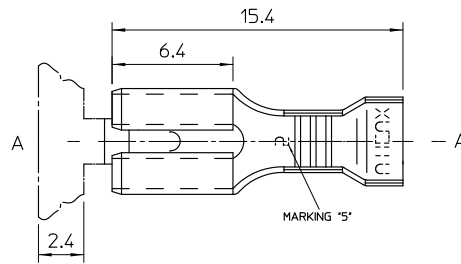


THIS DRAWING IS UNPUBLISHED. RELEASED FOR PUBLICATION  
 © COPYRIGHT BY TYCO ELECTRONICS CORPORATION. ALL RIGHTS RESERVED.

LOC		DIST		REVISIONS			
P	LTR	DESCRIPTION		DATE	DWN	APVD	
-	-			-	-	-	

NOTES:

1. WIRE SIZE RANGE:  
 CONDUCTOR: 0.5mm<sup>2</sup> - 1.5mm<sup>2</sup>  
 INSULATION: 2.2mm - 2.8mm
2. THIS PRODUCT IS UL APPROVED.



THIS INFORMATION IS CONFIDENTIAL AND PROPRIETARY TO TYCO ELECTRONICS CORPORATION AND IS NOT TO BE DISCLOSED TO ANYONE OTHER THAN TYCO ELECTRONICS CORPORATION, HARRISBURG, PENNSYLVANIA, USA.

BRASS	RECEPTACLE H1143	1-1627015-1
MATERIAL DESC.	DESCRIPTION	PART No.

THIS DRAWING IS A CONTROLLED DOCUMENT.		DWN: W. Riede 20.10.04	Tyco Electronics Corporation AUSTRALIA	
ALL DIMENSIONS IN mm		CHK: H. Thai 20.10.04		
TOLERANCES UNLESS OTHERWISE SPECIFIED: DIMENSION (mm) TOLERANCE (+/-mm) LESS THAN 10 0.4 OVER 10 TO 30 0.5 OVER 30 TO 80 0.7 OVER 80 TO 250 1.0 ANGLES 42°		APVD: W. Riede 20.10.04	NAME: RECEPTACLE, QC 4.8x0.5	
UNREELING DIRECTION FROM TOP OF REEL 		PRODUCT SPEC: -	SIZE: A3	DRAWING NO: 1627015
MATERIAL: - FINISH: -		APPLICATION SPEC: -	RESTRICTED TO: -	
		WEIGHT: -	CUSTOMER DRAWING	
			SCALE: 5:1	SHEET 1 OF 1 REV 0