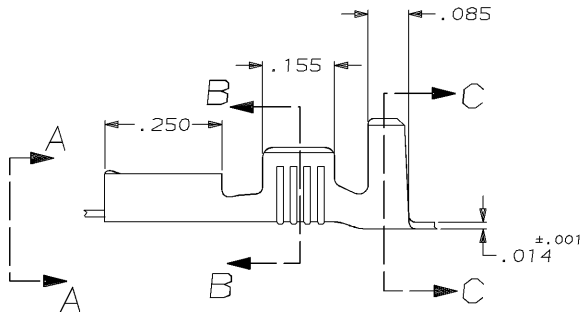
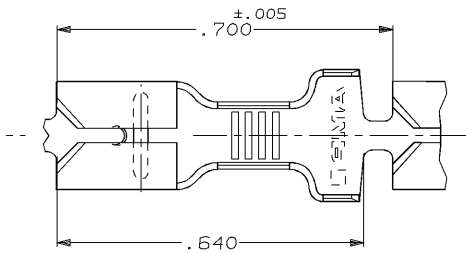


DRAWING MADE IN THIRD ANGLE PROJECTION

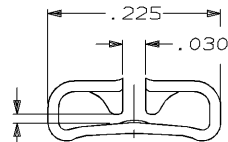
THIS DRAWING IS UNPUBLISHED. RELEASED FOR PUBLICATION, 19 .

© COPYRIGHT 19 BY AMP INCORPORATED. ALL INTERNATIONAL RIGHTS RESERVED.

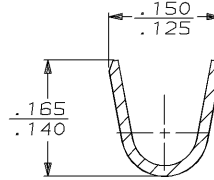
LOC	DIST	REVISIONS				DATE	APPD
P	F	ZONE	LTR	DESCRIPTION			
AF	50			REV PER 0710-0104-96	3/20/96	JR/PD	



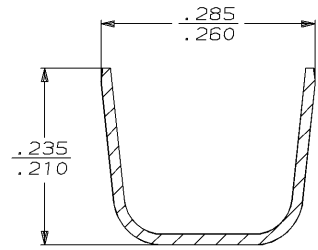
1 CONTINUOUS STRIP ON REELS.  
 FINISH:  
 63596-1 PLAIN  
 63596-2 PRE-TIN



FITS .187 SERIES  
 FASTON TAB  
 VIEW A-A  
 SCALE 8:1



SECTION B-B  
 SCALE 8:1



SECTION C-C  
 SCALE 8:1

.180 - .230 OR (2) .110 MAX	18-14 OR (2) #16'S	.032	63596-2
INSUL RANGE	WIRE SIZE	MATING TAB THK ±.001	PART NO 63596-1
DO NOT SCALE PRINT. UNLESS SPECIFIED DIMENSIONS ARE IN INCHES TOLERANCES ON: 2 PLC DEC ± 3 PLC DEC ± .010 ANGLES ±	DR 10/4/90 JR RUTH CHK 10/4/90 NS FEHER APPD 10/4/90 C NEVERS APPD 10/4/90 R KUZO	<b>AMP</b> AMP INCORPORATED Harrisburg, Pa. 17105	
MATERIAL #4H BRASS	PRODUCT SPEC -	NAME RECEPTACLE, FASTON™ .187 SERIES	
FINISH 2	APPLICATION SPEC -	SIZE <b>B</b>	CAGE CODE 00779
	WEIGHT -	SCALE 5:1	DRAWING NO 63596
			SHEET 1 OF 1

AMP 1470-15 REV 6-89  
 20-MAR-96 11:13:48 amp13469 Au/dsp12121/dwg121/Au.Faston-cab/Au.187-str

CUSTOMER DRAWING