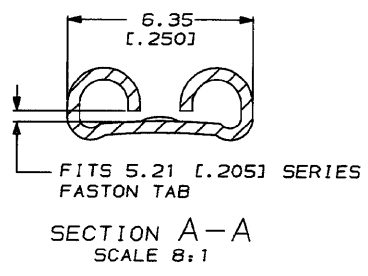
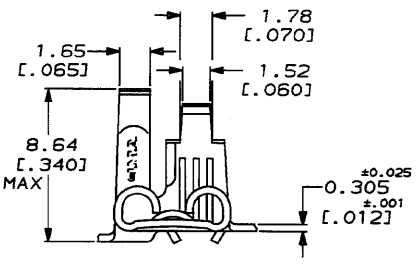
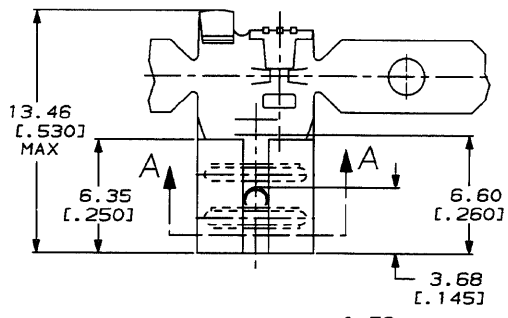


4  
DRAWING MADE IN THIRD ANGLE PROJECTION  
THIS DRAWING IS UNPUBLISHED. RELEASED FOR PUBLICATION .19  
© COPYRIGHT 19 BY AMP INCORPORATED. ALL INTERNATIONAL RIGHTS RESERVED.

LOC		DIST		P		F		ZONE		LTR		REVISIONS		DATE	APPD
AF	50											K	REVISED PER 0012-93	3/1/93	JR/CM



- 1 CONTINUOUS STRIP ON REELS
- 2 FEED IS 16.51 ±0.13 [.650] ±.005
- 3 TIN PLATE 0.002032 [.000080] MIN THK.

TIN	2.79-4.32 [.110-.170]	0.5-1.3mm <sup>2</sup> [20-16]	0.508 [.020]	42199-2
FINISH	INSULATION RANGE	WIRE SIZE	MATING TAB THK ±0.025 ±[.001]	PART NO 42199-1
DO NOT SCALE PRINT. (UNLESS SPECIFIED) DIMENSIONS IN MM (INCHES) TOLERANCES ON: 2 PLC DEC ± 0.38 [.015] ANGLES =		DR 1/26/90 R RUM CHK 1/26/90 RS PBER APPD 1/26/90 C HESSIS	AMP INCORPORATED Harrisburg, Pa. 17105	
MATERIAL	#4H BRASS	PRODUCT SPEC	NAME RECEPTACLE, FASTON, FLAG, 5.21 [.205] SERIES	
FINISH	SEE TABLE	APPLICATION SPEC	SIZE B	CAGE CODE 00779
		WEIGHT	SCALE 5:1	DRAWING NO 42199
			SHEET	1 OF 1

**METRIC**

CUSTOMER DRAWING

MP 1470-15 REV 6-82  
R2 1993 13.36-6 AMP 485228-01P2121-062121-4 FASTON REEL 25-R