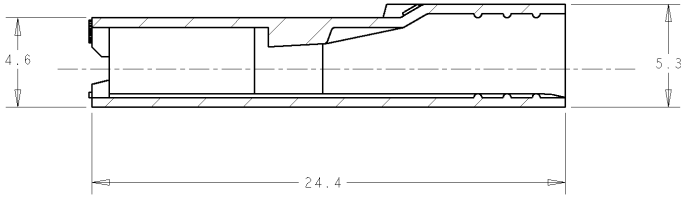
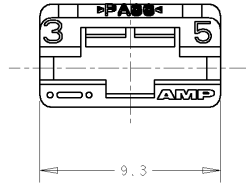


THIS DRAWING IS UNPUBLISHED. / PLANO NO PUBLICADO
 RELEASED FOR PUBLICATION. / LIBRE DE SER PUBLICADO
 © COPYRIGHT 1978 BY AMP INCORPORATED. ALL RIGHTS RESERVED. TODOS LOS DERECHOS RESERVADOS. LOS PRODUCTOS AMP ESTAN CUBIERTOS POR PATENTES ACTUALES © PENDIENTES

LOC	DIST	REVISIONS			
P	LTR	DESCRIPTION	DATE	DWN	APVD
		DESCRIPTION	FECHA	DIB	APP
		336369 ERA 98-ES00-11	7JUL1998	JL	AA
		REVISED PER ES00-0081-00	31JUN00	JL	LB
		REVISED PER ES00-0014-04	2FEB2004	J.L	L.B
		REVISED PER ECO-10-000445	15JAN10	KK	HMR

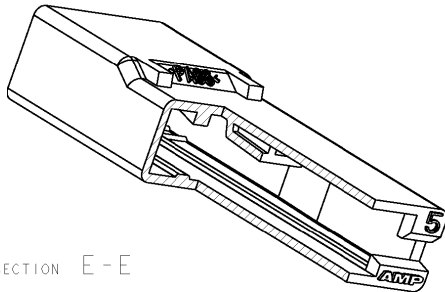


SECTION A - A



1 OBSOLETE PARTS: OBSOLETE CIS STREAMLINING PER D.RENAUD/D.SINISI

	NEGRO/BLACK	NYLON 6/6 V0	3-336369-5
	NATURAL	NYLON 6/6 V0	3-336369-1
1 OBSOLETE	VIOLETA/VIOLET	NYLON 6/6 V2	336369-8
	NEGRO/BLACK	NYLON 6/6 V2	336369-5
1 OBSOLETE	AZUL/BLUE	NYLON 6/6 V2	336369-3
	NATURAL	NYLON 6/6 V2	336369-1
	COLOR	MATERIAL	REFER.



SECTION E - E

<small>THIS DRAWING IS A CONTROLLED DOCUMENT FOR AMP INCORPORATED. IT IS SUBJECT TO CHANGE AND THE CONTROLLING ENGINEERING ORGANIZATION SHOULD BE CONTACTED FOR THE LATEST REVISION. ESTE PLANO ES UN DOCUMENTO CONTROLADO DE AMP INCORPORATED. Y PUEDE SER MODIFICADO PARA LA ÚLTIMA REVISIÓN. CONTACTAR CON LA ORGANIZACIÓN DE CONTROL DE INGENIERÍA.</small>		DWN /DIB J. LAZARO /JUL98 CHK /COMP A. ALONSO /JUL98	AMP ESPAÑOLA, S.A. BARCELONA, SPAIN.
DIMENSIONS: DIMENSIONES (MM)	TOLERANCES UNLESS OTHERWISE SPECIFIED: TOLERANCIAS PARA OMISION	APVD /APP - - NAME TITLE	AMP HOUSING FOR 6,35 SRS. FASTON RECP. CAJA IVIA FASTON 6,35 RECP.
	0 PLC /LUG ± -- 1 PLC /LUG ± 0.3 2 PLC /LUG ± -- 3 PLC /LUG ± -- 4 PLC /LUG ± -- ANGLES /ANGULOS ± 0° 30'	PRODUCT SPEC ESPEC PRODUCTO 108-22033	SIZE TAB A3
MATERIAL VER TABLA SEE TABLE	FINISH ACABADO VER TABLA SEE TABLE	APPLICATION SPEC ESPEC APLICACION -	DRAWING NO PLANO NO C-336369
		WEIGHT PESO -	RESTRICTED TO RESTRINGIDO A -
		CUSTOMER DRAWING /PLANO DE CLIENTE	SCALE ESCALA 5:1
		SHEET HOJA OF DE 1	REV C1

AMP 1470-19 REV 27JUN96

Print/ENGINEER DRAWING