

4

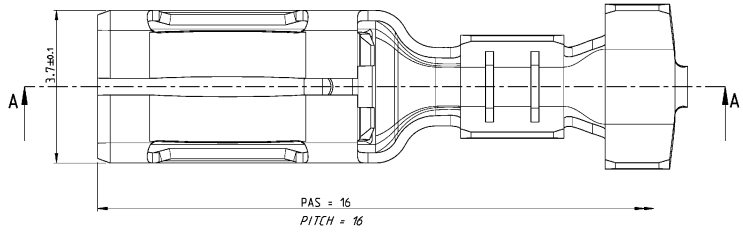
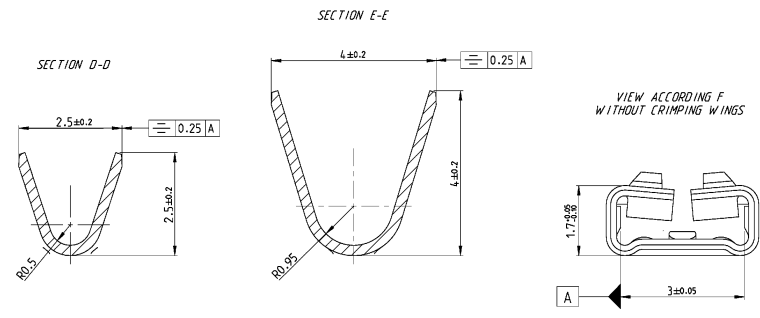
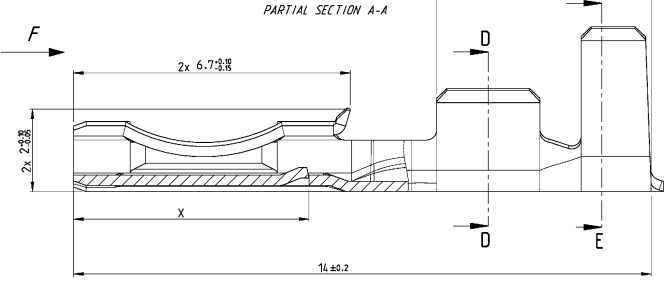
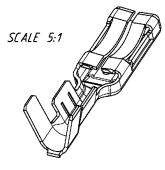
3

2

1

THIS DRAWING IS UNPUBLISHED. RELEASED FOR PUBLICATION. COPYRIGHT © 2011 ALL RIGHTS RESERVED.

REV	DATE	BY	CHKD	DESCRIPTION
D	31AUG10	PPS	JDf	DRAWING IN TE STANDARD
D1	23MAY11	ARK	HMJ	REVISED PER ECO-11-005150
E	04JUN11	PPS	JDf	ADD SPECIAL FORM FOR ALL PNs



SPECIAL ACTIVE FORM, IN ACCORDANCE WITH STANDARD AND TAB THICKNESS: SECTION A-A, SCALE 15:2

FORM "A"	FORM "B"	FORM "C"	FORM "D"

CUSTOMER PART NUMBER	TE PART NUMBER	FORM	STANDARD	MATERIAL THICKNESS = 0.25	SURFACE FINISH	X	TSI INSERTION WITHOUT SPIGOT	TSI INSERTION	TSI EXTRACTION	AVERAGE	MINI ALONE	TSI EXTRACTION FORCES (DIN)
1-1544545-2	0.8	D	DIN	BRASS CUZn30	PRE-TINNED 1 TO 3µ	3.7				≧6		
1-1544545-1	0.5	C			BLANK							
1-1544545-0	0.8	D										
1544545-9	0.5	C										
1544545-8	0.8	B		STEEL XC18	POST-NI 3 TO 6µ					≧25		
1544545-7	0.8	B		BRONZE CU504P	PRE-TINNED 1 TO 3µ		≧5			≧15		
1544545-6	0.5	A										
1544545-5	0.8	B	CEI		PRE-TINNED 1 TO 3µ	5.7				≧9	≧5	
1544545-4	0.5	A		BRASS CUZn30						≧50		
1544545-3	0.5	A								≧25		
1544545-2	0.8	B			BLANK							
1544545-1	0.5	A										

THIS DRAWING IS A CONTROLLED DOCUMENT. P. FLORES 31AUG10, E. SAPRT 31AUG10, J. DAHER 31AUG10

**STE** TE Connectivity

2.8 MM FEMALE TERMINAL STANDARDS CEI AND DIN WIRE RANGE 0.5 TO 1 SQUARE MM

SCALE 15:1 SHEET 1 OF 1 REV E