

4

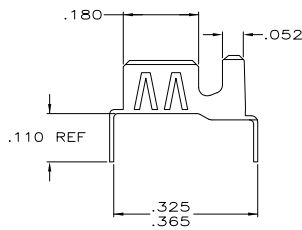
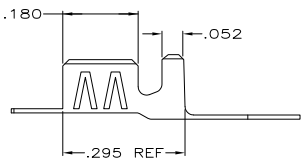
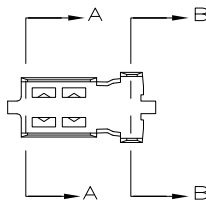
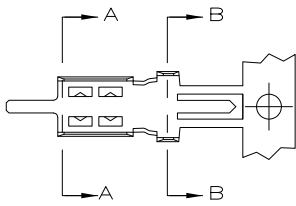
3

2

1

THIS DRAWING IS UNPUBLISHED. RELEASED FOR PUBLICATION. ALL RIGHTS RESERVED.

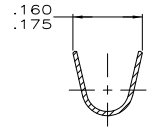
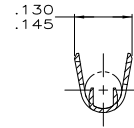
LOC	DIST	REVISIONS			
P	LR	DESCRIPTION	DATE	BY	APPD
AJ	16	N1	REVISED PER ECO-11-005030	11MAR11	RK HMR



VIEW C

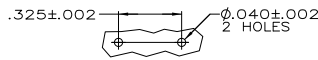
VIEW D

1. ACCEPTS COAX CABLE WITH .095-.110 O.D. JACKETS AND .055-.065 DIELECTRIC O.D. EXAMPLE: RG-174 AND RG-316
2. TIN PLATE PER ASTM-B-545.
3. INSTRUCTION SHEET NO.: 408-2472-2.
4. ON STRIP
5. ON STRIP, LEGS MUST BE BENT MANUALLY AFTER CRIMPING.
6. LOOSE PIECE PARTS WITH PREFORMED LEGS.
7. BRASS PER ASTM-B-36.
8. TIN-LEAD PLATE PER ASTM-B-545.

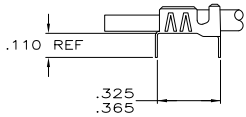


SECTION A-A

SECTION B-B



PCB LAYOUT



AS APPLIED BY APPLICATOR

VIEW E



AS APPLIED BY APPLICATOR

VIEW F

△	D	△	9-226176-2
△	C&F	△	9-226176-1
△	C&E	△	9-226176-0
△	D	△	226176-4
△	C&F	△	226176-3
△	C&E	△	226176-2
FINISH	VIEW	TYPE	PART NUMBER

THIS DRAWING IS A CONTROLLED DOCUMENT.		DRN	30JL999	TE Connectivity	
DIMENSIONS: INCHES		DR	M. OBRINE	TE Connectivity	
OTHER DIMENSIONS: MILLIMETERS		CHK	M. OBRINE	BRAID-PIC	
DESIGNED BY: J. CABARLO		APPD	J. CABARLO	P.C. BOARD GROUND TERMINAL	
PRODUCT SPEC: ---		NAME	---	SINGLE CRIMP-SINGLE CONTACT	
APPLICATION SPEC: ---		SIZE	A2	00779	226176
MATERIAL: SEE NOTE 7		WEIGHT	.007 OZ	SCALE	6:1
FINISH: SEE TABLE		CUSTOMER DRAWING	---	SHEET	1 of 1
				REV	N1