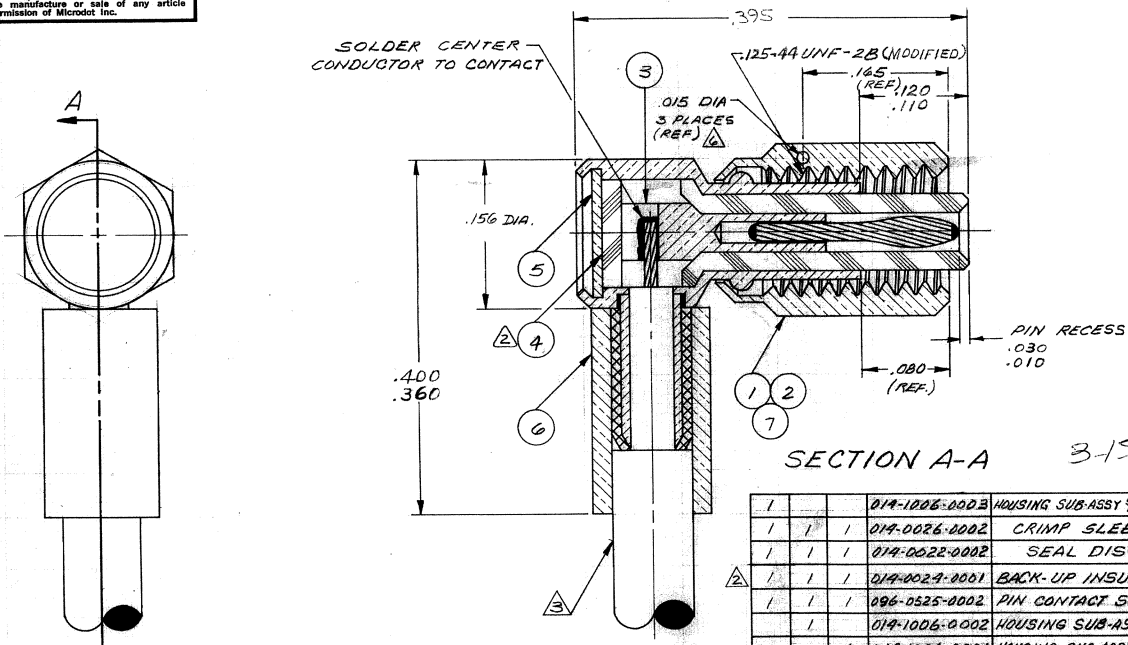


These drawings and specifications are the property of Microdot Inc., are issued in strict confidence and shall not be divulged, be reproduced or copied, or used as the basis for the manufacture or sale of any article without written permission of Microdot Inc.



SECTION A-A 3-1532145-4

1		014-1006-0003	HOUSING SUB-ASSY 1/2 HEX W/ 1/32 SAFETY HOLES		7
1	1	014-0026-0002	CRIMP SLEEVE	COPPER ALLOY	6
1	1	014-0028-0002	SEAL DISC	BRASS-QQ-B-613	5
1	1	014-0024-0001	BACK-UP INSULATOR	TEFLON-L-P-403	4
1	1	094-0525-0002	PIN CONTACT SUB-ASSY		3
1		014-1006-0002	HOUSING SUB-ASSY 1/2 NPT		2
1		014-1006-0001	HOUSING SUB-ASSY 1/2 HEX		1

- ON -3 ASSY ONLY (SAFETY WIRE HOLES)
  - 5. MATES WITH ALL LEPPA/CON 141 SCREW-ON SERIES JACKS & RECEPTACLES.
  - 4. SEE RF-ASMB-13 FOR ASSEMBLY INSTRUCTIONS. ASSEMBLY TOOL 010-0132-0000, THOMAS & BETTS P/N WT418, REGR
  - CABLE ACCEPTANCE DIMS-CENTER COND. .012 NOM DIELECTRIC .033 MAX., JACKET .081 MAX.
  - MAY BE POTTED WITH FURANE 10F-951 OR EQUIV. IN PLACE OF ITEM 4.
  - 1. ALL METALLIC PARTS ARE GOLD PLATED PER MIL-G-45204, TYPE II, GRADE C, CLASS I
- NOTES: UNLESS OTHERWISE SPECIFIED

A	380	RELEASE FOR PROG.	AM	1/8	1/2	1/2
B	380	CORRECTION FOR DIMENSIONS	SR	1/8	1/2	1/2
C	470	DIM. CHANGE REV'S	CM	1/8	1/2	1/2
D	470	REV. LET. UPDATE	SD	1/8	1/2	1/2
E	380	WAS 3/8; WAS 3/8; 1/16 WAS 3/16; DEC. TOL. W/ HOLE .010; ADD TYPE & GRADE TO DATE 1 12-10-77	MD	1/8	1/2	1/2
F	380	.020/.360 WAS .380 .030/.010 WAS .020 (REF) .120/.110 WAS .115	SH	1/8	1/2	1/2
G	380	REV. UPDATE	15	3/8	1/2	1/2

STANDARD TOLERANCES UNLESS OTHERWISE SPECIFIED		MALCO A MICRODOT COMPANY, INC. 220 PASADENA AVE., SO. PASADENA, CAL	
DEC. #	.015	SURFACE TREATMENT NOTED	
FRAC. #	1/64	MATERIAL NOTED	
ANGLES	5°	APP	
ECCENTRICITY	5°	APP	
MAX. T.I.R.		CHECKED BY	
HOLE DIA. #		DRAWN BY J. H. S.	
SURFACE ROUGHNESS	MICRO INCHES	SCALE	
THREADS TO MIL-S-7748		WT	
COMMERCIAL TOLERANCES APPLY TO STOCK DIMENSIONS		DATE 2/22/60	
RIGHT ANGLE PLUG ASSEMBLY		DRAWING NUMBER	
PROD CODE 346		142-0002-000X 4	
CODE CDM			