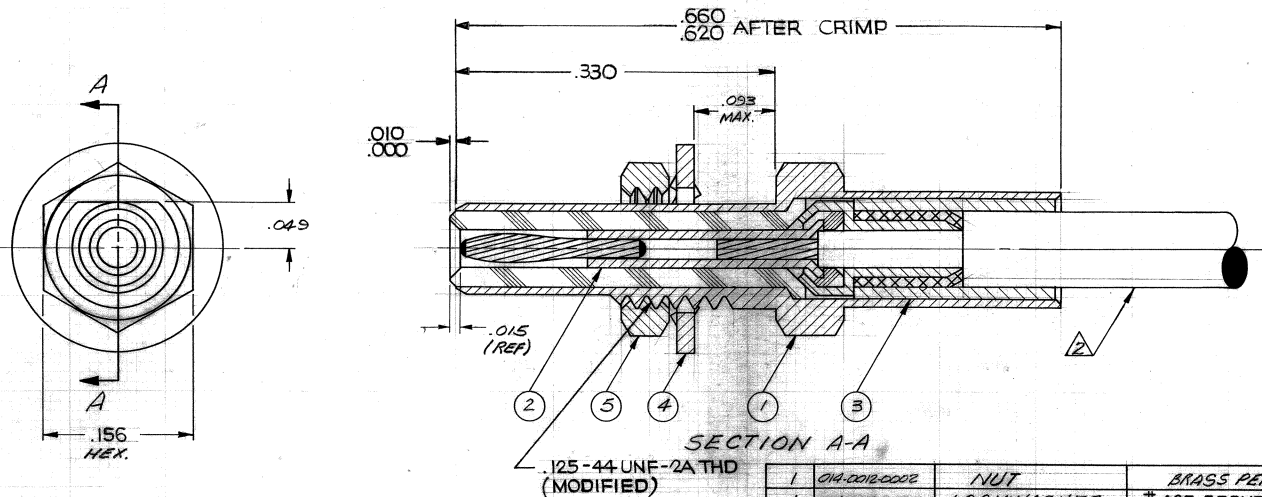


CODE
CDM 141-1001-0001 D

These drawings and specifications are the property of Microdot Inc., are issued in strict confidence and shall not be divulged, be reproduced or copied, or used as the basis for the manufacture or sale of any article without written permission of Microdot Inc.



Tyco Dwg 1-1532006-9
Micro P/N 141-1001-0001

.125-44 UNF-2A THD
(MODIFIED)

QTY	PART NO.	NOMENCLATURE	MAT'L & SPEC	ITEM
1	014-0018-0002	NUT	BRASS PER QQ-B-626	5
1	014-0015-0002	LOCKWASHER	#425 BRONZE ALLOY	4
1	014-0004-0002	CRIMP SLEEVE	COPPER ALLOY	3
1	014-1018-0001	CONTACT SUB-ASSY		2
1	014-1015-0001	HOUSING SUB-ASSY		1

4. SEE RF-ASMB-15 FOR CABLE ASSEMBLY INSTRUCTIONS.
3. MATES WITH ALL LEPPA/CON 142 SLIDE-ON SERIES PLUGS.
- △ CABLE ACCEPTANCE DIM'S-CENTER COND. .012, DIELECTRIC .039, SHIELD .054, JACKET .075.
1. ALL METALLIC PARTS ARE GOLD PLATED PER MIL-G-45204 TYPE II, CLASS I

NOTES: UNLESS OTHERWISE SPECIFIED

ASSEMBLY NO. REQ'D	NO. REQ'D	LET	ECO	REVISION DESCRIPTION	BY	DATE	APP

A	1975	RELEASE FOR PROD.	UM	1/16	ES		
B	2895	ITEM 4 MAT'L WAS P/BRONZE PER QQ-B-750; DIM. IS .625 WAS 5/8 IS. 343 WAS 11/32; UPDATE LOGO	LM		ES		
C		UPDATE REV. 38287	ES		ES		
D		UPDATE REV, ECN 39213	TL		ES		

STANDARD TOLERANCES UNLESS OTHERWISE SPECIFIED		MALCO A MICRODOT COMPANY, INC. 220 PASADENA AVE., SO. PASADENA, CAL
DEC. ±	.010	
FRAC. ±		
ANGLES ±		
ECCENTRICITY		
MAX. T.I.R.		
HOLE DIA. ±		
SURFACE ROUGHNESS		
MICRO INCHES		
THREADS TO MIL-S-742		
COMMERCIAL TOLERANCES APPLY TO STOCK DIMENSIONS		
SURFACE TREATMENT		NOTED
MATERIAL		NOTED
APP	APP	
CHECKED BY	DRAWN BY	J. M. E.
SCALE	WT	DATE
10:1		1/15/06
PROD. CODE	CODE	DRAWING NUMBER
946	CDM	141-1001-0001 D

BHD JACK, ASSEMBLY - SLIDE ON