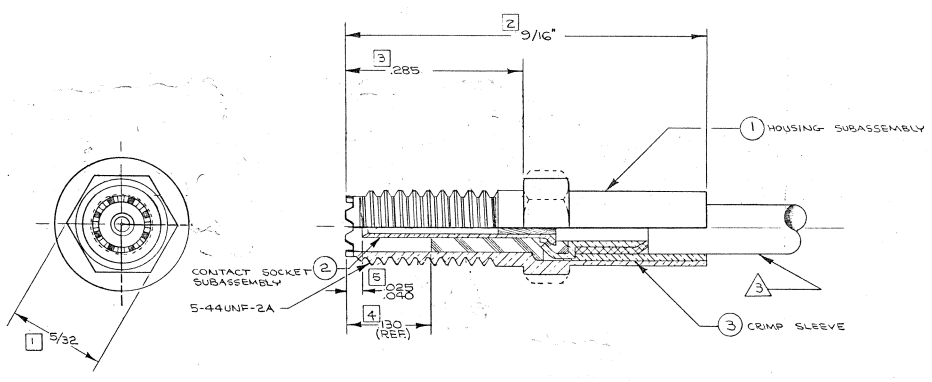


- NOTES: UNLESS OTHERWISE SPECIFIED
1. INTERPRET DRAWING IN ACCORDANCE WITH APPLICABLE STANDARDS PRESCRIBED BY MIL-D-1000 AND MICRODOT PROCEDURE BULLETIN 34-3.
 2. ALL METALLIC PARTS ARE GOLD PLATED PER MIL-G-45204 TYPE II, CLASS I.
 3. CABLE ACCEPTANCE DIM'S - CENTER COND. .012, DIELECTRIC .034, SHIELD .054, JACKET .075.
 4. MATES WITH ALL LEPPA/CON 142 LOCKING INTERFACE PLUGS.
 5. SEE RF-AS18-12 FOR CABLE ASSEMBLY INSTRUCTIONS.
 6. FOR COMPONENT PARTS, SEE PARTSLIST.

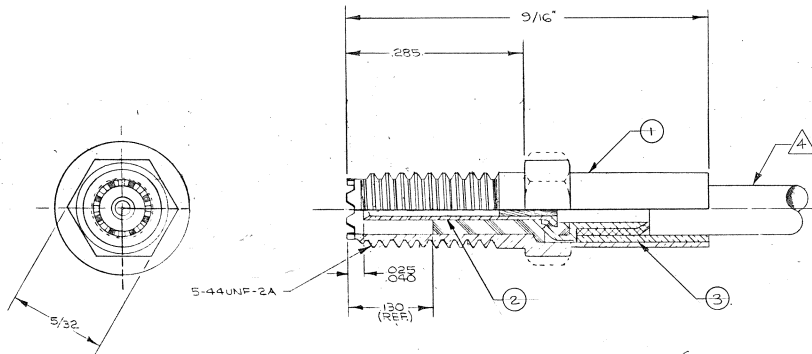
REVISIONS		
SYM	DESCRIPTION	DATE APPROVED
A	RELEASED FOR PRODUCTION (WORKING)	11/17/69 [Signature]
B	REV. LETTER UPDATED (401839)	11/17/69 [Signature]
C	REV. LET. UPDATE ECD 20651	11/17/69 [Signature]
D	UPDATE REV. LETTER (40359)	11/17/69 [Signature]



Tyco Dwg 1-1532006-7
Micro P/N 141-0017-0001

QTY. REQD.	PART NO.	NOMENCLATURE OR DESCRIPTION	MATERIAL & SPECIFICATION	ITEM NO.
LIST OF MATERIAL OR PARTS LIST				
UNLESS OTHERWISE SPEC.		DRAWN: CMFGE 9/3/69	MICRODOT INC. 220 PASADENA AVE. SO. PASADENA, CALIF. STR. JACK ASSEMBLY WITH INTERLOCKING INTERFACE P2DD CODE 946	
DIMENSIONS ARE IN INCHES		CHECK: E. Mungara 11/17/69		
TOLERANCES DECIMALS FRACTIONS		PR. ENG: [Signature] 11/17/69		
LAST NUMBER USED: 5 TOLERANCES: .010 ± 1/64 .005 .002 ANGLES ± 5° SURFACE ROUGHNESS: √ SURFACE TREATMENT: SEE NOTE 2		MATERIAL:	CODE IDENT SIZE	
NEXT ASSY. USED ON APPLICATION	NEXT ASSY. TOP ASSY. QUANTITY REQD.	DO NOT SCALE THIS DWG.	98278 C	141-0017-0001
			SCALE: —	WEIGHT: 00
			SHEET 1 of 1	

REVISIONS			
SYM	DESCRIPTION	DATE	APPROVED
A	RELEASED FOR PRODUCTION (NDRI035) DR	7/21/76	[Signature]
B	REV LETTER UPDATED ECD 10329	7/1/76	[Signature]
C	REV LET. UPDATE ECD 20651	2-23-76	[Signature]
D	UPDATE REV LETTER, (40359)	7/10/76	[Signature]



1-532006-7

NOTES: UNLESS OTHERWISE SPECIFIED
 1. THIS JACK ASSEMBLY MATES WITH ALL LEPPA/CON 142 INTERLOCKING INTERFACE PLUGS.
 2. SEE RF-ASMB-12 FOR CABLE ASSEMBLY INSTRUCTIONS.
 3. ALL METALLIC PARTS ARE GOLD PLATED PER MIL-G-45204 TYPE II, CLASS 1.
 4. CABLE ACCEPTANCE DIMENSIONS:
 CENTER CONDUCTOR .012.
 DIELECTRIC .034.
 SHIELD .054.
 JACKET .075.

QTY. REQD.	PART NO.	NOMENCLATURE OR DESCRIPTION	MATERIAL & SPECIFICATION	ITEM NO.
1	014-0004-0002	CRIMP SLEEVE	LEADED COPPER FULL HARD OR O.F.H.C. 121 COPPER	3
1	014-1009-0001	SOCKET CONTACT SUBASSY		2
1	014-1085-0001	HOUSING SUBASSY, STR. JACK		1

LIST OF MATERIAL OR PARTS LIST				
UNLESS OTHERWISE SPEC.	DRAWN	E. MINGNER	10/8/69	MICRODOT INC. 220 PASADENA AVE. SO. PASADENA, CALIF. STR. JACK ASSEMBLY WITH INTERLOCKING INTERFACE LEPPA/CON PREP 9/6
DIMENSIONS ARE IN INCHES	CHECK			
TOLERANCES	PR. ENG.			
DECIMALS FRACTIONS	CHK. ENG.			
XXX ± .010 ± 1/64	MATERIAL			
XXXX ± .005 ± 1/64	SEE TAB. BLOCK			
ANGLES ±	SURFACE TREATMENT			
SURFACE ROUGHNESS				

NEXT ASSY. USED ON APPLICATION	NEXT ASSY. TOP ASSY. QUANTITY REQD.	DO NOT SCALE THIS DWG.

CODE IDENT	SIZE	SCALE	WEIGHT	SHEET
98278 C	CD	141-0017-0001		1 of 1