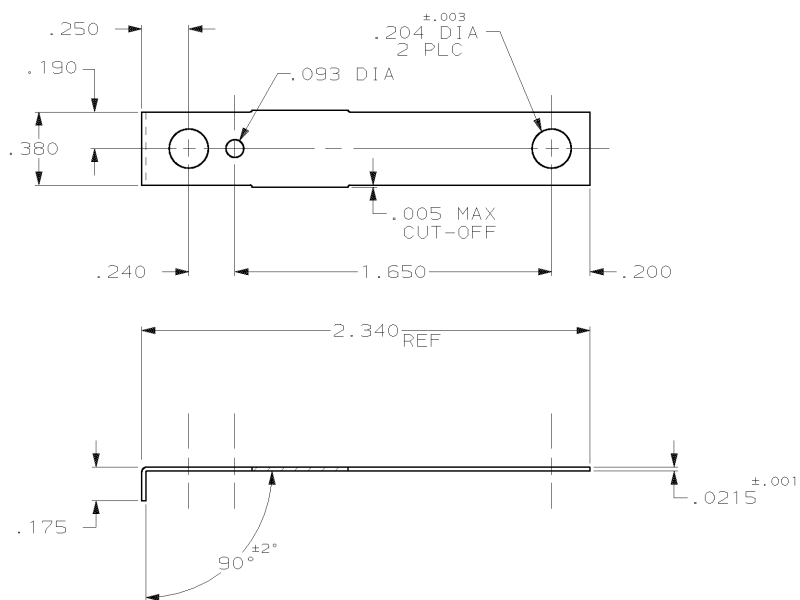


DRAWING MADE IN THIRD ANGLE PROJECTION

THIS DRAWING IS UNPUBLISHED. RELEASED FOR PUBLICATION
 © COPYRIGHT 19 BY AMP INCORPORATED, HARRISBURG, PA. ALL INTERNATIONAL RIGHTS RESERVED. AMP PRODUCTS MAY BE COVERED BY U.S. AND FOREIGN PATENTS AND/OR PATENTS PENDING.

| | | | | | |
|--------------------------|------|-----------|---|------|-----|
| LOC | DIST | REVISIONS | | | |
| AF | 50 | P | F | ZONE | LTR |
| DESCRIPTION | | | | | |
| REVISED PER 0L10-0240-97 | | | | | |
| DATE | | | | | |
| APPROVED | | | | | |
| PF/JP | | | | | |



1 SUPPLIED IN LOOSE PIECE.

63450-1

PART NO

| | | | |
|--|------------------|------------|---------|
| UNLESS OTHERWISE SPECIFIED DIMENSIONS ARE IN INCHES TOLERANCES ON: 2 PL DEC ± - 3 PL DEC ± .015 ANGLES ± - | DR | JR RUTH | 2/10/87 |
| | CHK | G YETTER | 2/11/87 |
| | APPO | R FRANTZ | 2/11/87 |
| | APPD | TL SHUTTER | 2/11/87 |
| MATERIAL | COPPER ANNEALED | | |
| FINISH | PRE-TIN | | |
| | PRODUCT SPEC | - | |
| | APPLICATION SPEC | - | |
| | WEIGHT | - | |



AMP INCORPORATED
Harrisburg, Pa. 17105

| | | |
|-----------------|---------|------------|
| NAME | | |
| GROUNDING STRAP | | |
| SIZE | FSCM NO | DRAWING NO |
| B | 00779 | 63450 |
| SCALE | NTS | SHEET |
| | | 1 OF 1 |

AMP 1470-15 REV 10-84

02-JUN-97 10:21:22 amp17795 /ws/dept2122/dwg2122/u.qr-strap

CUSTOMER DRAWING