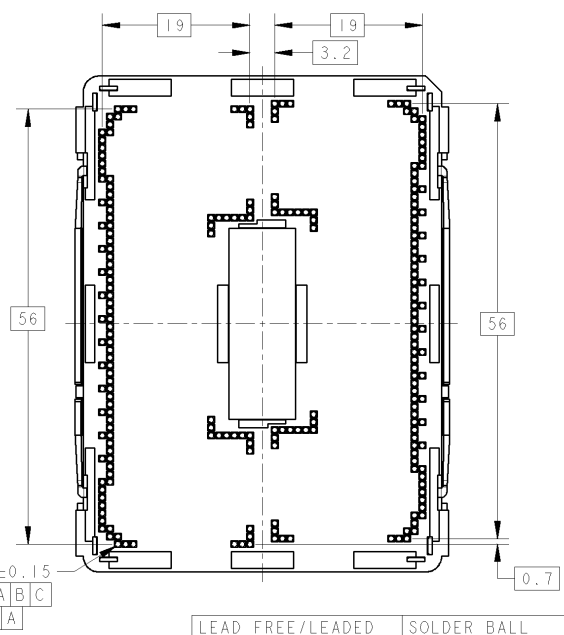
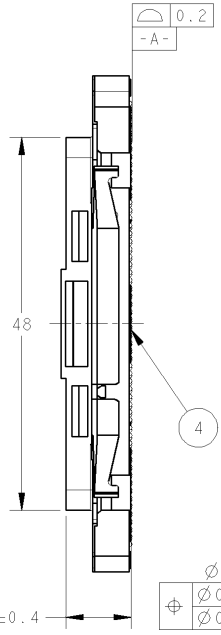
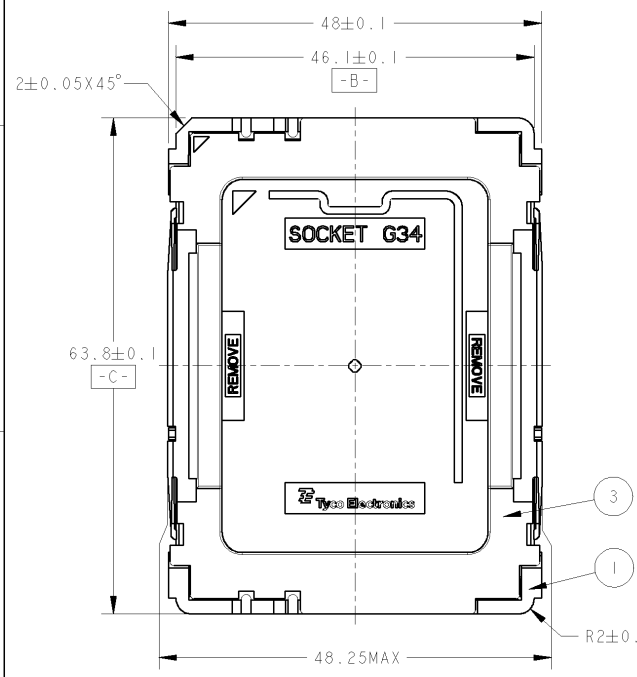


THIS DRAWING IS UNPUBLISHED. RELEASED FOR PUBLICATION  
 BY TYCO ELECTRONICS CORPORATION. ALL RIGHTS RESERVED.

LOC	DIST	REVISIONS			
F	LTR	DESCRIPTION	DATE	DWN	APVD
90		RELEASED	09SEP2009	MI	TK
91		REVISED	16DEC2009	MI	TK
A		REVISED	15NOV2010	MI	TK



2069189-3	LEAD FREE	0.38um
2069189-2	LEADED	0.76um
2069189-1	LEAD FREE	0.76um
PARTS NUMBER	SOLDER BALL TYPE	AU PLATING THK

LEAD FREE/LEADED	SOLDER BALL	4
THERMO-PLASTICS	COVER CAP	3
COPPER ALLOY	CONTACT	2
LCP	HOUSING	1
MATERIAL	PARTS NAME	ITEM

DIMENSIONS: mm TOLERANCES UNLESS OTHERWISE SPECIFIED: ±0.3 ±3°		DWN 09SEP2009 M. INOUE CHK 09SEP2009 T. KUSUHARA APVD 09SEP2009 T. KUSUHARA	Tyco Electronics Corporation Kawasaki, Japan
MATERIAL: - FINISH: -		PRODUCT SPEC: - APPLICATION SPEC: - WEIGHT: -	NAME: SOCKET ASSY LGA SOCKET 1944 (G34)
CUSTOMER DRAWING		SIZE: A3 CAGE CODE: 00779 DRAWING NO: C-2069189	RESTRICTED TO: - SCALE: NONE SHEET 1 OF 4 REV A

4

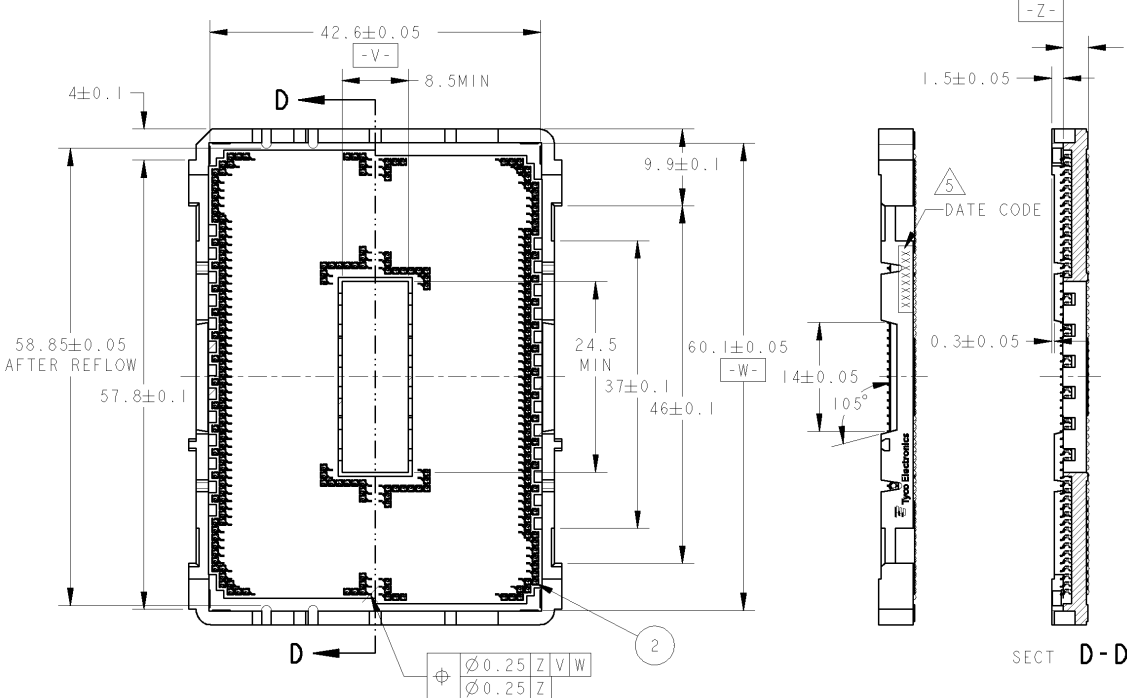
3

2

1

THIS DRAWING IS UNPUBLISHED. RELEASED FOR PUBLICATION ZD  
 COPYRIGHT 20 BY TYCO ELECTRONICS CORPORATION. ALL RIGHTS RESERVED.

LOC	DIST	REVISIONS					
J	-	P	LTR	DESCRIPTION	DATE	DWN	APVD
		-		SEE SHEET 1			



1. APPLICABLE PARTS NUMBER OF SOCKET ACTUATION MECHANISM IS 2069190-1
  2. PARTS NUMBER COMBINED WITH SOCKET ACTUATION MECHANISM IS 2069197-1 (LEAD FREE /0.76um AU)  
2069197-2 (LEADED /0.76um AU)  
2069197-3 (LEAD FREE /0.38um AU)
  3. COVER CAP PART NUMBER : 2069192-1
- △4. DIMENSION APPLIES ONLY WHEN AMD REFERENCE BACK PLATE DESIGN IS USED.
- △5. DATE CODE INDICATION  
 XXXXXXXX  
 TYPE (LF: LEAD FREE, L: LEADED)  
 SHIFT (DAY: D, NIGHT: N)  
 DAY OF A WEEK (1~7)  
 WEEK (01~52 OR 53)  
 YEAR (EX 2008:08)

SECT D-D

<small>THIS DRAWING IS A CONTROLLED DOCUMENT FOR TYCO ELECTRONICS CORPORATION. IT IS SUBJECT TO CHANGE AND THE CONTROLLING ENGINEERING ORGANIZATION SHOULD BE CONTACTED FOR THE LATEST REVISION.</small>		DWN	-	Tyco Electronics Corporation	
DIMENSIONS: mm		CHK	-	Kawasaki, Japan	
		APVD	-	NAME	
TOLERANCES UNLESS OTHERWISE SPECIFIED: ±0.3 ±0.3 ANGLES:		PRODUCT SPEC	-	SOCKET ASSY	
MATERIAL		APPLICATION SPEC	-	LGA SOCKET 1944 (G34)	
FINISH		WEIGHT	-	SIZE	RESTRICTED TO
		CUSTOMER DRAWING	-	A3	-
				CAGE CODE	DRAWING NO
				00779	2069189
				SCALE	SHEET
				NONE	2
				OF	4
				REV	A

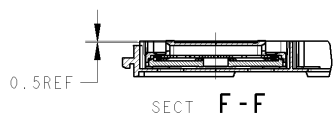
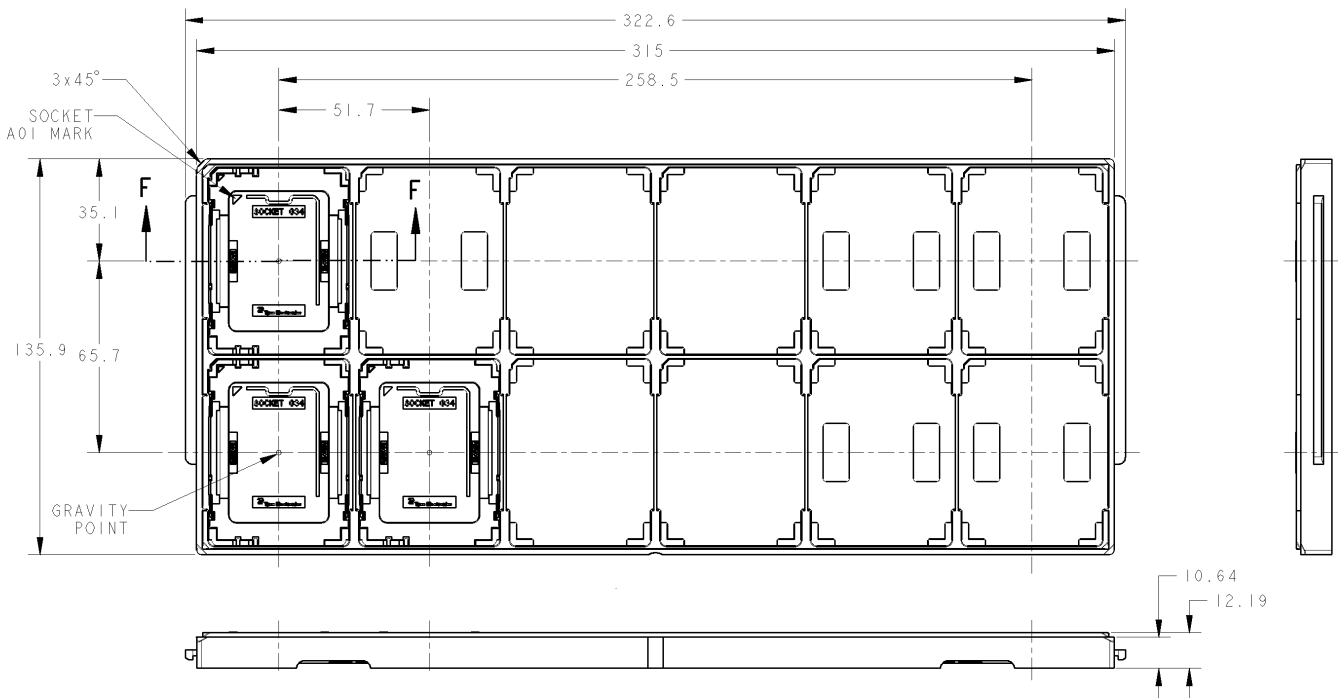
AMP 1470-19 REV 31MAR2000



THIS DRAWING IS UNPUBLISHED. RELEASED FOR PUBLICATION 20  
 © COPYRIGHT 20 BY TYCO ELECTRONICS CORPORATION. ALL RIGHTS RESERVED.

LOC	DIST	REVISIONS			
F	LTR	DESCRIPTION	DATE	DWN	APVD
-	-	SEE SHEET 1	-	-	-

HARD TRAY LAYOUT



<small>THIS DRAWING IS A CONTROLLED DOCUMENT FOR TYCO ELECTRONICS CORPORATION. IT IS SUBJECT TO CHANGE AND THE CONTROLLING ENGINEERING ORGANIZATION SHOULD BE CONTACTED FOR THE LATEST REVISION.</small>		DWN	-	Tyco Electronics Corporation Kawasaki, Japan	
DIMENSIONS: mm		CHK	-	NAME	
TOLERANCES UNLESS OTHERWISE SPECIFIED: 0 PLC ±- 1 PLC ±- 2 PLC ±- 3 PLC ±- 4 PLC ±- ANGLES ±-		APVD	-	SOCKET ASSY LGA SOCKET 1944 (G34)	
MATERIAL		PRODUCT SPEC	-	SIZE	CAGE CODE
FINISH		APPLICATION SPEC	-	A3	00779
		WEIGHT	-	DRAWING NO	C-2069189
CUSTOMER DRAWING			SCALE	NONE	RESTRICTED TO
			SHEET	4	4
			REV	A	

AMP 1470-19 REV 31MAR2000