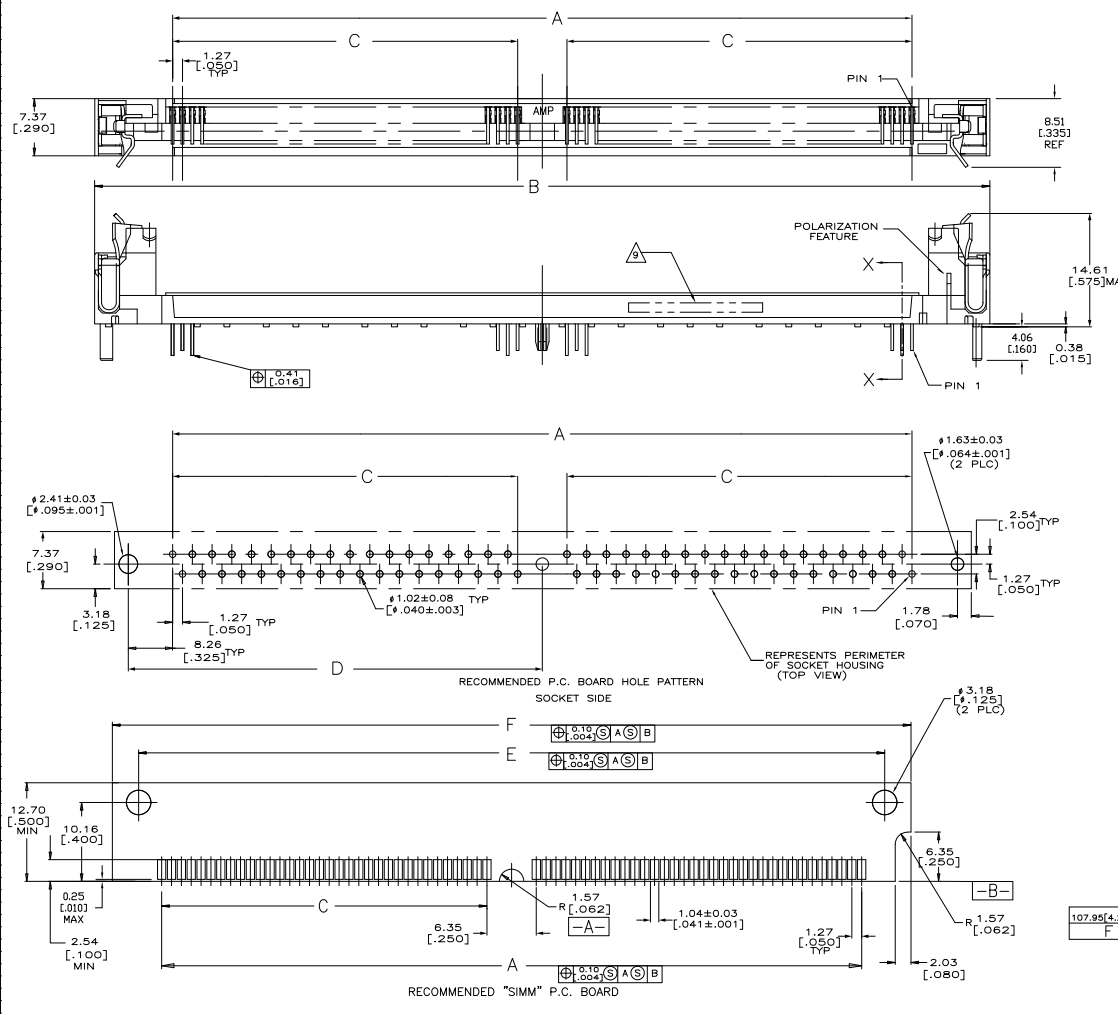
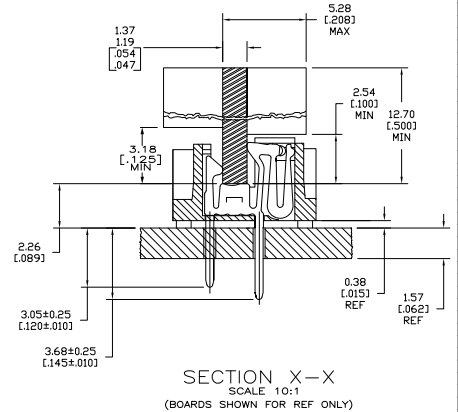


REV	DATE	DESCRIPTION	BY	CHKD
00				
B		REVISED PER ECO-04-00242		



- △ HOUSING-MATERIAL : LIQUID-CRYSTAL-POLYMER.
- △ CONTACT-MATERIAL : PHOS. BRONZE.
- △ LATCH-MATERIAL : BRASS, NICKEL PLATE.
- △ CONTACT-PLATE 0.00127 [.000050] MIN NICKEL ALL OVER.
- △ CONTACT-PLATE 0.00076[.000030] MIN. GOLD AT CONTACT PTS.
- △ CONTACT SOLDERTAILS-PLATE 0.00508[.000200] MIN MATTE TIN.
- 7. IN ADDITION TO THOSE RECOMMENDED "SIMM" P.C. BOARD DIMENSIONS AND TOLERANCES SHOWN, ALL JEDEC SPECIFICATIONS APPLY AS SHOWN ON MO-116, ISSUE A.
- 8. RECOMMENDED MATING S.I.M.M. TAB METALLURGY:
 BASE METAL-COPPER, PLATING TO BE 0.00076[.000030] MIN GOLD OVER 0.00127[.000050] MIN NICKEL.
- △ DATE CODE: (YEAR WEEK) XXXX FORMAT, LOCATED APPROXIMATELY AS SHOWN ON OPPOSITE SIDE.



107.95[4.250]	101.19[3.984]	55.88[2.200]	44.45[1.750]	115.57[4.550]	95.25[3.750]	72	5822032-4
F	E	D	C	B	A	NO. OF PINS	PART NO.

THIS DRAWING IS A CONTROLLED DOCUMENT. THE NATIONAL ARCHIVE

DESIGNER: M. WILSON
 CHECKED: M. WILSON
 DATE: 11/15/88
 DRAWING NO: A100779
 REV: 1
 SHEET: 1 OF 1

THIS DRAWING IS A CONTROLLED DOCUMENT. THE NATIONAL ARCHIVE
 DATE: 11/15/88
 DRAWING NO: A100779
 REV: 1
 SHEET: 1 OF 1