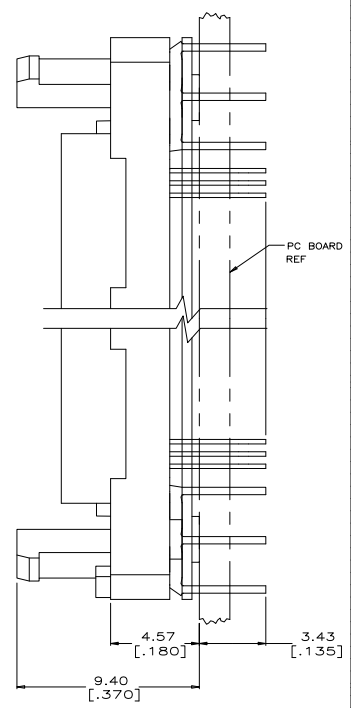
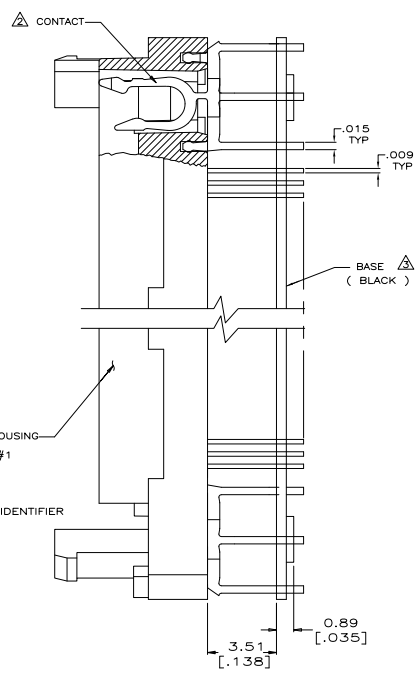


SUB-ASSEMBLY SHOWN AS SHIPPED

SUB-ASSEMBLY SHOWN IN FINAL POSITION



- △ HOUSING MATERIAL SHALL BE LIQUID CRYSTAL POLYMER. (BLACK)
- △ CONTACT MATERIAL SHALL BE PHOS. BRONZE. PLATING SHALL BE .000200 [0.00508] MIN. TIN/LEAD OVER .000050 [0.00127] MIN. NICKEL ALL OVER.
- △ BASE MATERIAL SHALL BE LIQUID CRYSTAL POLYMER. (BLACK)
- △ CONTACT MATERIAL SHALL BE PHOS. BRONZE. PLATING SHALL BE .000200 [0.00508] MIN. TIN (LEAD FREE) OVER .000050 [0.00127] MIN. NICKEL ALL OVER.

822115-4	△	6.43 [.253]	25.35 [.998]	38.20 [1.504]	2-822114-4	160
822115-3	△	7.73 [.304]	22.76 [.896]	38.20 [1.504]	2-822114-3	144
822115-4	△	6.43 [.253]	25.35 [.998]	38.20 [1.504]	822114-4	160
822115-3	△	7.73 [.304]	22.76 [.896]	38.20 [1.504]	822114-3	144
MATING COVER PART NO.	FINISH	C	B	A	PART NO.	POSN.

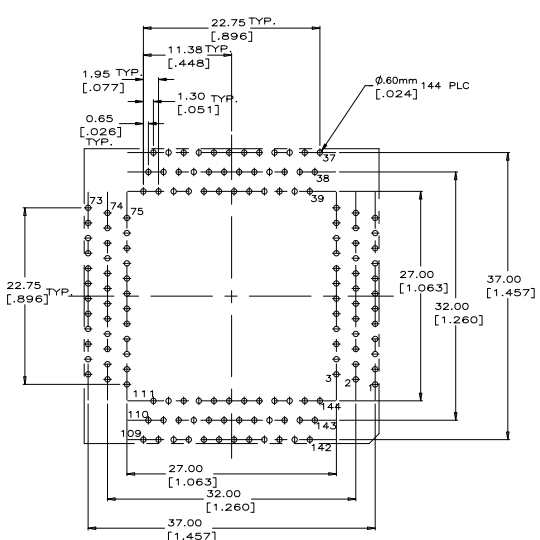
THIS DRAWING IS A CONTROLLED DOCUMENT. **STE** TE Connectivity

DESIGNER	DATE	REVISED BY	DATE
APPROVED BY	DATE	REVISED BY	DATE

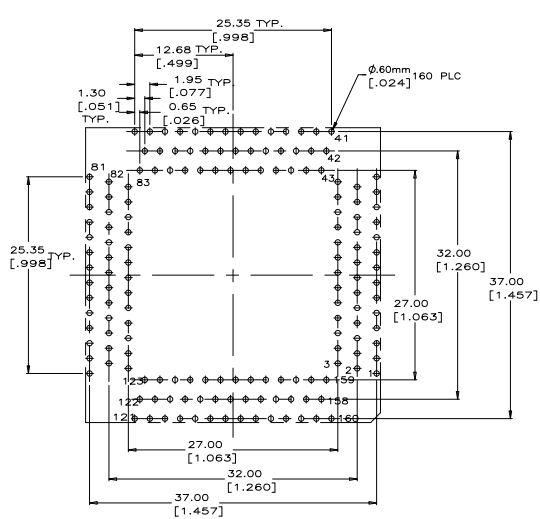
DESCRIPTION: MICRO-PITCH SOCKET, METRIC HOUSING SUB-ASSEMBLY FOR 28mm SQUARE, .65 PITCH POPP

DATE: 7/10/01 DRAWING NO: A100779 (G) 822114

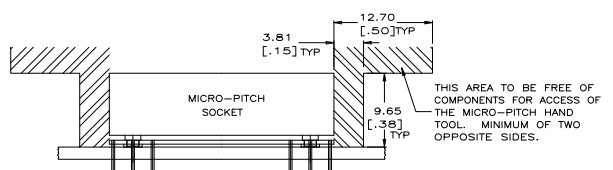
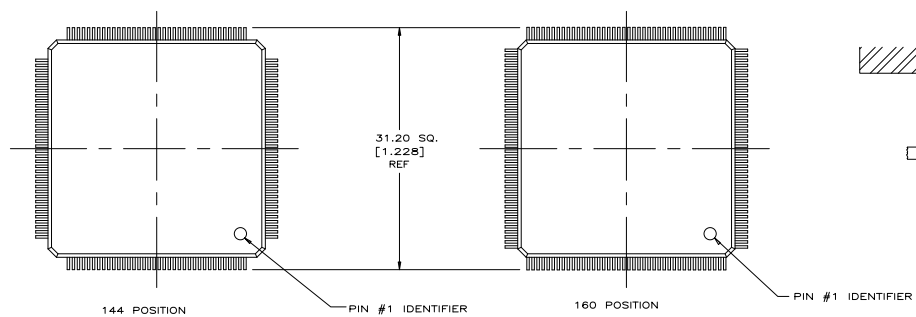
CUSTOMER DRAWING



RECOMMENDED P.C. BOARD HOLE PATTERN  
 SOCKET SIDE  
 144 POSN.



RECOMMENDED P.C. BOARD HOLE PATTERN  
 SOCKET SIDE  
 160 POSN.



THIS DRAWING IS A CONTROLLED DOCUMENT.		REV. SHEET	3-1-11
DESIGNED BY		DESIGNED BY	3-1-11
CHECKED BY		CHECKED BY	3-1-11
APPROVED BY		APPROVED BY	3-1-11
DATE		DATE	3-1-11
PROJECT		PROJECT	3-1-11
CUSTOMER DRAWING		CUSTOMER DRAWING	

**STE** TE Connectivity  
 MICRO-PITCH SOCKET, METRIC  
 HOUSING SUB-ASSEMBLY FOR  
 20mm SQUARE, 65 PITCH P2PFP  
 SEE DATE CODE DRAWING NO. A100779G-822114  
 REVISIONS TO: 10:1 2 2 E1