

4

3

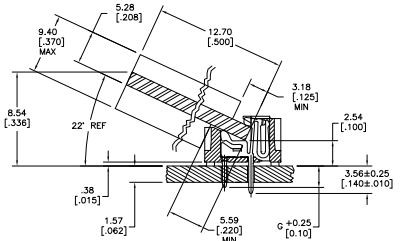
2

1

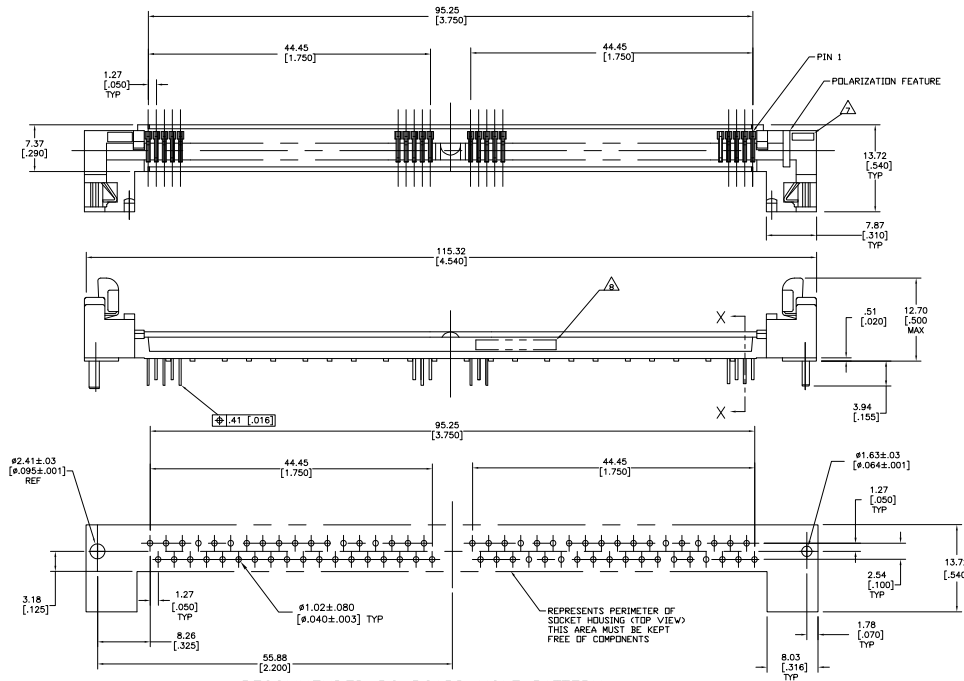
THIS DRAWING IS UNPUBLISHED. RELEASED FOR PUBLICATION
 BY TYCO ELECTRONICS CORPORATION. ALL RIGHTS RESERVED.

LOC	DIST	REVISIONS			
F	LTR	DESCRIPTION	DATE	BY	APP'D
GP	00	B	REVISED PER ECO-06-007841	19JUL06	JDP MB

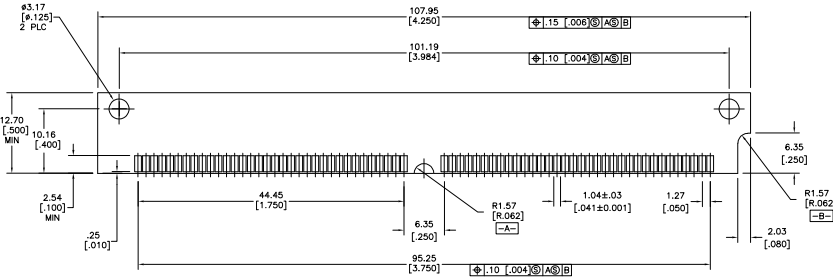
- △ HOUSING MATERIAL: LIQUID CRYSTAL POLYMER.
- △ CONTACT MATERIAL: PHOS. BRONZE.
- △ LATCH MATERIAL: STAINLESS STEEL.
- △ CONTACT PLATE: .00508 [.000200] MIN MATTE TIN OVER .00127 [.000050] MIN NICKEL.
- 5. IN ADDITION TO THOSE RECOMMENDED "SMM" PC BOARD DIMENSIONS AND TOLERANCES SHOWN, ALL JEDEC SPECIFICATIONS APPLY AS SHOWN ON MO-116, ISSUE A.
- 6. RECOMMENDED MATING SIMM TAB METALLURGY: .00762 [.000300] MIN TIN/LEAD OVER .00127 [.000050] MIN NICKEL.
- △ "S" IDENTIFICATION SHALL BE LOCATED IN APPROX LOCATION SHOWN.
- △ DATE CODE INFORMATION (YEAR WEEK), LOCATED APPROXIMATELY AS SHOWN ON OPPOSITE SIDE.



SECTION X-X
 SCALE 5:1
 (BOARD SHOWN FOR REF ONLY)



RECOMMENDED PC BOARD HOLE PATTERN
 SOCKET SIDE



3.56 [140]	72	5822330-4
2.92 [115]	72	5822330-3
G± 0.25 [010]	NO. OF POSNS	PART NUMBER

THIS DRAWING IS A CONTROLLED DOCUMENT.		BY: S. MCMASTER	DATE: 06/20/05	Tyco Electronics Corporation Harrisburg, PA 17105-3608
DIMENSIONS: mm [MCHES]		CHK: M. YEOMANS	DATE: 06/20/05	
TOLERANCES UNLESS OTHERWISE SPECIFIED:		APP'D: M. YEOMANS		CONNECTOR, MICRO-EDGE, .050 LP, TIN PL. W/ METAL LATCH
0 PLC ± .	1 PLC ± .	PRODUCT SPEC:		
2 PLC ± .	3 PLC ± .	APPLICATION SPEC:		SIZE: A2
4 PLC ± .	ANGLES ± .	WEIGHT:		CAGE CODE: 00779
MATERIAL: 1 2 3		FINISH: 3 4		DRAWING NO: C=5822330
CUSTOMER DRAWING		SCALE: 4:1		SHEET: 1 of 1

AMP 1471-9 REV 31MM2000

5822330

A