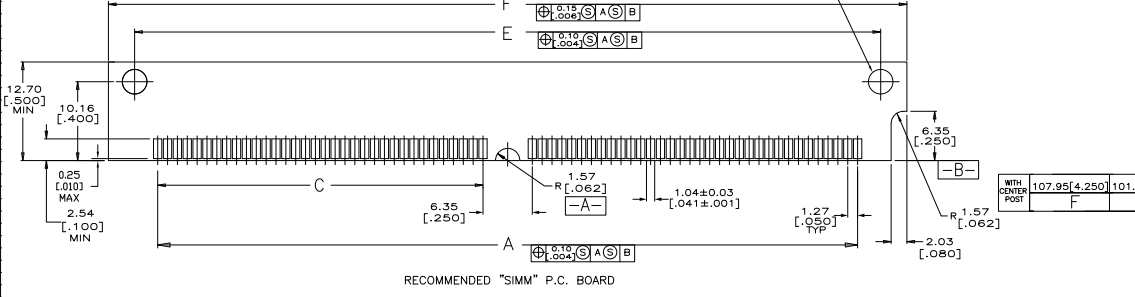
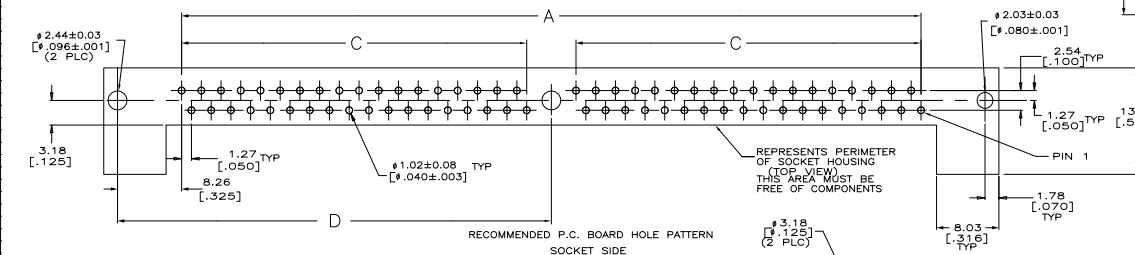
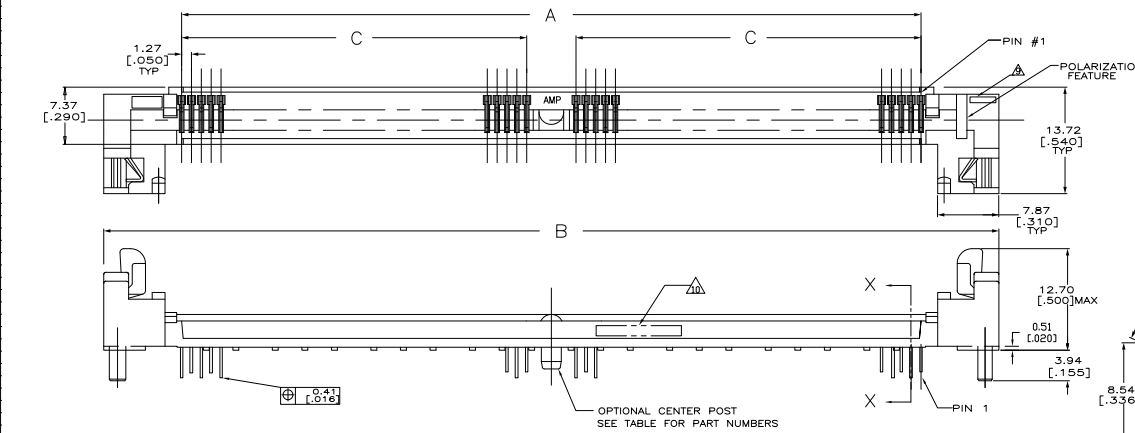
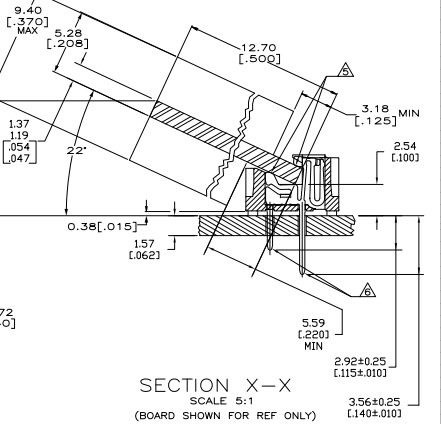


REV	DATE	DESCRIPTION	BY	CHK	APP
AC	00				
B1		REVISED PER EDD-11-005033			



- ▲ HOUSING-MATERIAL : LIQUID-CRYSTAL-POLYMER.
- ▲ CONTACT-MATERIAL : PHOS. BRONZE.
- ▲ LATCH-MATERIAL : STAINLESS STEEL.
- ▲ CONTACT-PLATE 0.00127 [.000050] MIN NICKEL ALL OVER.
- ▲ CONTACT-PLATE 0.00076[.000030] MIN. GOLD AT CONTACT PTS.
- ▲ CONTACT SOLDERTAILS-PLATE 0.00508[.000200] MIN MATTE TIN.
- 7. IN ADDITION TO THOSE RECOMMENDED "SIMM" P.C. BOARD DIMENSIONS AND TOLERANCES SHOWN, ALL JEDEC SPECIFICATIONS APPLY AS SHOWN ON MO-116, ISSUE A.
- 8. RECOMMENDED MATING S.I.M.M. TAB METALLURGY: BASE METAL-COPPER, PLATING TO BE 0.00076[.000030] MIN GOLD OVER 0.00127[.000050] MIN NICKEL.
- ▲ 'S' IDENTIFIER LOCATED APPROXIMATELY AS SHOWN.
- ▲ DATE CODE INFORMATION (YEAR WEEK), LOCATED APPROXIMATELY AS SHOWN ON OPPOSITE SIDE ONLY.



WITH CENTER POST	F	E	D	C	B	A	No. OF POS	PART NO
	107.95[4.250]	101.19[3.984]	55.88[2.200]	44.45[1.750]	115.32[4.540]	95.25[3.750]	72	5822097-3

THIS DRAWING IS A CONTROLLED DOCUMENT. SEARCH FOR REVISIONS. SEARCH FOR DIMENSIONS. SEARCH FOR TOLERANCES. SEARCH FOR MATERIALS. SEARCH FOR PARTS. SEARCH FOR SPECIFICATIONS. SEARCH FOR CUSTOMER SPEC. SEARCH FOR CUSTOMER DRAWING.

TE Connectivity
 CONNECTOR, MICRO-EDGE, .050, LP, GOLD PL, W/METAL LATCH
 SIZE: A1 00779 G=5822097
 DATE: 4.1 1 1 B1