

THIS DRAWING IS UNPUBLISHED
 ALL RIGHTS RESERVED
 © 2015 ELECTRONICS CORPORATION

REV	DATE	DESCRIPTION	BY	CHK
AD 00				
A	EC 023C 0868 04		BSV	KW
AT	REVISED PER ECO-09-024606		270CT09	KK AEG

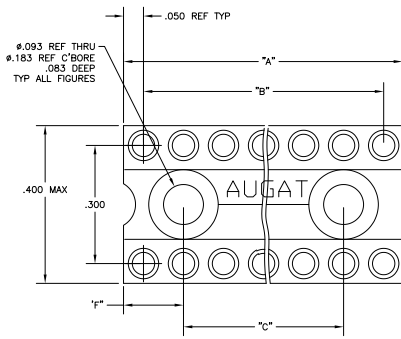


FIG. 1

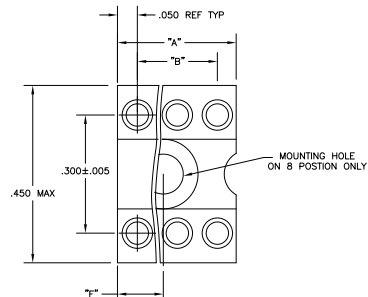


FIG. 2

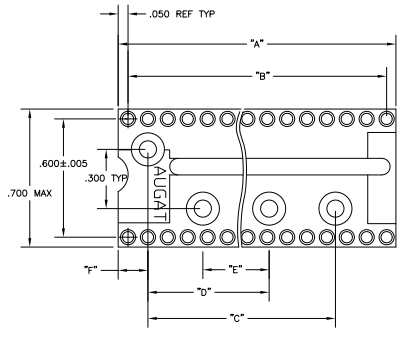
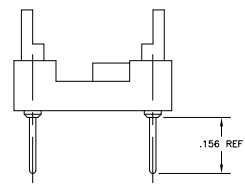
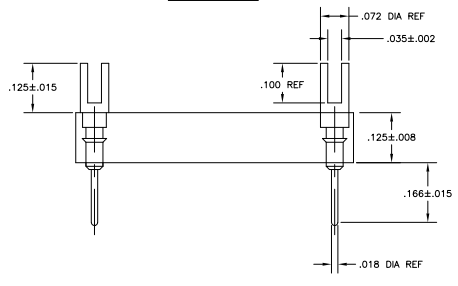


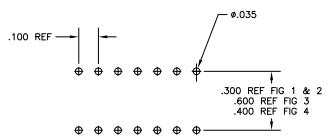
FIG. 3



- INSULATOR MATERIAL - THERMOPLASTIC POLYESTER, PCT, BLK, UL94 V-0.
- CONTACT PLATING - .000180-.000340 THK TIN (LEAD FREE) OVER .000050-.000180 THK COPPER.

⚠ OBSOLETE PARTS: OBSOLETE CIS STREAMLINING PER D.RENAUD/D.SINISI

FIG	"F"	"E"	"D"	"C"	"B"	"A" MAX	NO. OF POSN	PART NO.
OBSOLETE	3	.150	.500	.900	1.500	1.900	2.000	40 1-1571549-1
	3	.150	.500	.900	1.500	1.700	1.800	36 1-1571549-6
	3	.150	.500	.900	-	1.500	1.600	32 1571549-9
	3	.150	.500	.900	-	1.300	1.400	28 1571549-8
OBSOLETE	4	.175	-	-	.800	1.000	1.150	22 1571549-7
	1	.250	-	-	.500	.900	1.000	20 1571549-5
OBSOLETE	1	.150	-	-	.600	.800	.900	18 1571549-4
	1	.150	-	-	.500	.700	.800	16 1571549-3
OBSOLETE	1	.150	-	-	.400	.600	.700	14 1571549-2
	2	.200	-	-	.300	.400	.400	8 1571549-1



P.C.B HOLE LAYOUT
 TOLERANCE ±.003

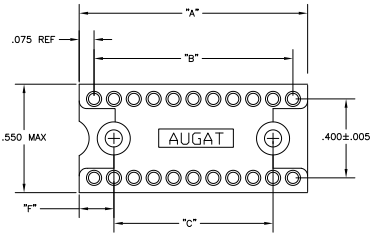


FIG. 4

THIS DRAWING IS A CONTROLLED DOCUMENT. **KEYBELL** **KEYBELL** **KEYBELL**
 DRAWING NO. **1571549-1** **1571549-1** **1571549-1**
 DATE **09/02/06** **09/02/06** **09/02/06**
 DRAWN BY **BSV** **BSV** **BSV**
 CHECKED BY **KW** **KW** **KW**
 APPROVED BY **KK** **KK** **KK**
 CUSTOMER DRAWING **AT** **AT** **AT**
 TITLE **DIP ADAPTER, FORK TOP PIN, LEAD FREE (REF AUGAT 600 SERIES ADAPTER)**
 SIZE **A1** **A1** **A1**
 SHEET **1** **1** **1** OF **1** **1** **1**