

4

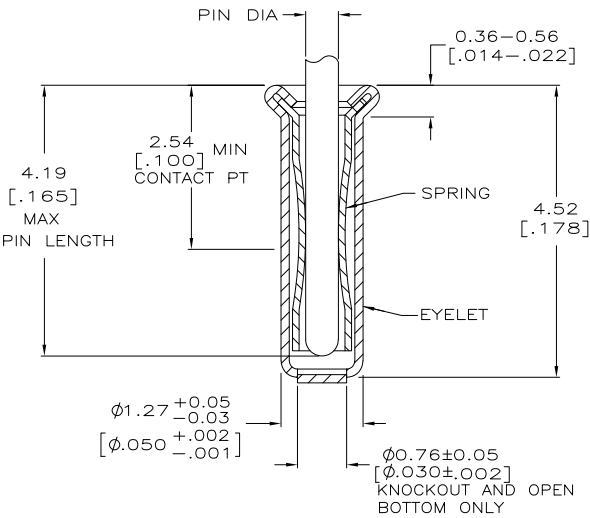
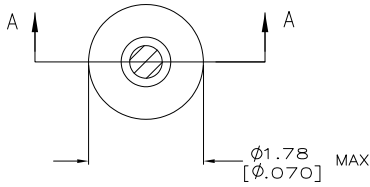
3

2

1

THIS DRAWING IS UNPUBLISHED. RELEASED FOR PUBLICATION
 © COPYRIGHT - By - ALL RIGHTS RESERVED.

LOC	DIST	REVISIONS			
P	LTR	DESCRIPTION	DATE	DWN	APVD
GP	00				
	AG2	REVISED PER ECO-11-004835	11MAR11	RK	HMR



SECTION A-A

- 1. TIN PER MIL-T-10727 OR TIN LEAD .00254 [.000100] MIN THK.
- 2. GOLD PER MIL-G-45204, TYPE II, 0.00076 [.000030] MIN THK OVER NICKEL PER QQ-N-290 0.00028 [.000011] MIN THK ON CONTACT AREA.
- 3. GOLD FLASH PER MIL-G-45204, TYPE II, 0.13µm [.000005] MIN THK. OVER NICKEL PLATE PER QQ-N-290 0.51µm-1.52µm [.000020-.000060] EXT THK.
- 4. GOLD PER MIL-G-45204, TYPE II, 0.00127 [.000050] MIN THK.
- 5. GOLD PER MIL-G-45204, TYPE II, 0.00127 [.000050] MIN THK OVER NICKEL PER QQ-N-290 0.00127 [.000050] MIN THK ON CONTACT AREA.
- 6. RECOMMENDED HOLE SIZE, PLATED OR UNPLATED:
 MACHINE INSERTION: 1.32 $\begin{matrix} +0.08 \\ -0.05 \end{matrix}$ [.052 $\begin{matrix} +.003 \\ -.002 \end{matrix}$]
 HAND INSERTION: 1.32 $\begin{matrix} +0.10 \\ -0.00 \end{matrix}$ [.052 $\begin{matrix} +.004 \\ -.000 \end{matrix}$]
- 7. APPLICATION TOOL PART NUMBER:
 MACHINE NO. 682127-3
 INSERTION HEAD NO. 682039-2
- 8. TO INSURE PROPER SPRING TENSION DO NOT EXCEED A 0.10 [.004] DIFFERENCE IN PIN DIA WHEN CHANGING TO A SMALLER PIN.
- 9. BOTTOM PLUG KNOCKOUT TOOL PART NUMBER 69729 WITH TIP PART NUMBER 69728.
- 10. TIN PER ASTM B545, 0.00254 [.000100] MIN THK.
- 11. MATERIAL: SPRING: BERYLLIUM COPPER QQ-C-533
 EYELET: COPPER, QQ-C-576

SUSPSD BY	BOTTOM TYPE	RECOMMENDED PIN DIA	FINISH		PART NO
			EYELET	SPRING	
50462-8	CLOSED	0.36-0.66 [.014-.026]	TIN 10	TIN 10	6-50462-7
	OPEN		GOLD 4	GOLD 5	1-50462-5
OBSOLETE	CLOSED	0.36-0.66 [.014-.026]	TIN 1	GOLD 2	1-50462-4
	KNOCKOUT		GOLD 3	TIN 1	50462-8
OBSOLETE	KNOCKOUT	0.36-0.66 [.014-.026]	TIN 1	TIN 1	50462-7
	OPEN		GOLD 3	GOLD 2	50462-6
OBSOLETE	OPEN	0.36-0.66 [.014-.026]	GOLD 3	GOLD 2	50462-5
	OPEN		GOLD 3	GOLD 2	50462-4
OBSOLETE	OPEN	0.36-0.66 [.014-.026]	GOLD 3	GOLD 2	50462-2
	OPEN		GOLD 3	GOLD 2	50462

THIS DRAWING IS A CONTROLLED DOCUMENT.		DWN R. TALLEY 4-5-91	TE Connectivity	
DIMENSIONS: mm [INCHES]		CHK -	MINIATURE SPRING SOCKET ASSEMBLY, SERIES 2	
TOLERANCES UNLESS OTHERWISE SPECIFIED:		APVD -	NAME -	
0 PLC ± -		PRODUCT SPEC -	RESTRICTED TO -	
1 PLC ± -		APPLICATION SPEC -	SIZE A3	CAGE CODE 00779
2 PLC ± -		WEIGHT -	DRAWING NO C=50462	SCALE 20:1
3 PLC ± 0.20 [.008]				SHEET 1 of 1
4 PLC ± -				REV AG2
ANGLES ± -				
MATERIAL 11				
FINISH -				