

4

3

2

1

THIS DRAWING IS UNPUBLISHED. RELEASED FOR PUBLICATION. ALL RIGHTS RESERVED.

LOC	DIST	REVISIONS		
P	LTR	DESCRIPTION	DATE	BY
FT	64			
P		REVISED PER ECO-11-004835	11MAR11	RK HMR

- 1 TIN PLATE PER ASTM B 545 .000254 [.000100] MIN THICK.
 2 GOLD PLATE PER ASTM B 488, 0.00076 [.000030] MIN THICK OVER NICKEL PLATE PER QQ-N-290 0.00028 [.000011] MIN THICK ON CONTACT AREA.

3. RECOMMENDED HOLE SIZE, PLATED OR UNPLATED:
 MACHINE INSERTION: 1.04±0.05 [.041±.002]
 HAND INSERTION: 1.02 ^{+0.10} _{-0.00} [.040 ^{+0.004} _{-.000}]

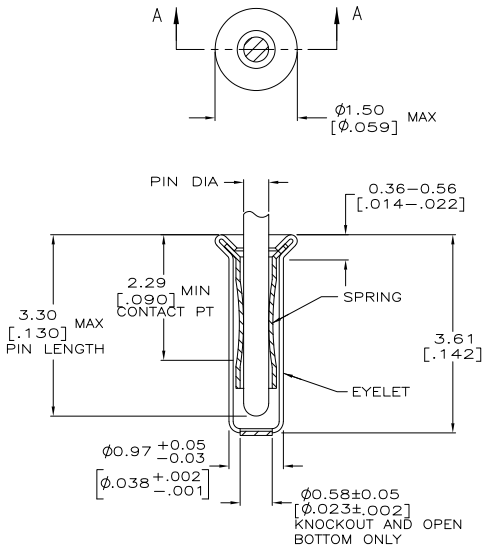
4. APPLICATION TOOL PART NUMBER:
 MACHINE NO. 682127-2
 INSERTION HEAD NO. 682039-1

- 5 TO INSURE PROPER SPRING TENSION DO NOT EXCEED A 0.10 [.004] DIFFERENCE IN PIN DIA WHEN CHANGING TO A SMALLER PIN.

6. BOTTOM PLUG KNOCKOUT TOOL PART NUMBER 69729 WITH TIP PART NUMBER 69728.

- 7 MATERIAL:
 SPRING: BERYLLIUM COPPER PER ASTM B 194
 EYELET: COPPER PER ASTM B 152

- 8 OBSOLETE PARTS: OBSOLETE CIS STREAMLINING PER D.RENAUD/D.SINISI



SECTION A-A

OBVIOUS	OPEN	0.46-0.51 [.018-.020]	TIN	GOLD	6-5330808-0
	CLOSED	0.33-0.51 [.013-.020]			6-5330808-5
	OPEN	0.25-0.33 [.010-.013]			5-5330808-6
	KNOCKOUT	0.33-0.51 [.013-.020]			5-5330808-4
	CLOSED	0.25-0.33 [.010-.013]			5-5330808-3
	OPEN	0.33-0.51 [.013-.020]			5-5330808-0
	CLOSED	0.33-0.51 [.013-.020]			4-5330808-7
	BOTTOM TYPE	RECOMMENDED PIN DIA	EYELET	SPRING	2-5330808-7
			FINISH		PART NO

SUPERSEDED BY 5-5330808-4

OBVIOUS

THIS DRAWING IS A CONTROLLED DOCUMENT.		BY: A. FERNANDEZ	DATE: 20APR2005
DIMENSIONS: INCHES		CHK: J. HAVENER	DATE: 20APR2005
MATERIAL: SEE TABLE		APP: J. HAVENER	DATE: 20APR2005
FINISH: SEE TABLE		PRODUCT SPEC: 108-14008	NAME: MINIATURE SPRING SOCKET ASSEMBLY SERIES 1
		APPLICATION SPEC: 114-13152	SIZE: A2
		WEIGHT: -	CAGE CODE: 00779
		CUSTOMER DRAWING	DRAWING NO: C-5330808
			RESTRICTED TO: -
			SCALE: 20:1
			SHEET: 1 of 1
			REV: P

1471-9 (3/11)

5330808

A