

4

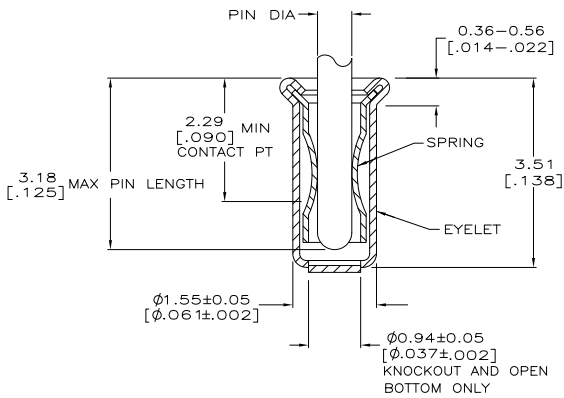
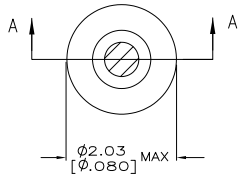
3

2

1

THIS DRAWING IS UNPUBLISHED. RELEASED FOR PUBLICATION. ALL RIGHTS RESERVED.

REV	DATE	BY	CHKD	DESCRIPTION
P	07MAR11	RK	HMR	REVISED PER ECO-11-004835



SECTION A-A

- △ TIN PLATE PER ASTM B 545 0.00254 [.000100] MIN THICK.
- △ GOLD PLATE PER ASTM B 488 0.00076 [.000030] MIN THICK OVER NICKEL PLATE PER QQ-N-290 0.00028 [.000011] MIN THICK ON CONTACT AREA.
- 3. RECOMMENDED HOLE SIZE, PLATED OR UNPLATED:
  - MACHINE INSERTION: 1.57  $\begin{matrix} +0.10 \\ -0.08 \end{matrix}$   $\begin{bmatrix} .062 & +.004 \\ & -.003 \end{bmatrix}$
  - HAND INSERTION: 1.60  $\begin{matrix} +0.10 \\ -0.00 \end{matrix}$   $\begin{bmatrix} .063 & +.004 \\ & -.000 \end{bmatrix}$
- 4. APPLICATION TOOL PART NUMBER: MACHINE NO. 682127-4 INSERTION HEAD NO. 682039-3
- △ TO INSURE PROPER SPRING TENSION DO NOT EXCEED A 0.05 [.002] DIFFERENCE IN PIN DIA WHEN CHANGING TO A SMALLER PIN.
- 6. BOTTOM PLUG KNOCKOUT TOOL PART NUMBER 69728 WITH TIP PART NUMBER 69728-1.
- 7. MATERIAL: BERYLLIUM COPPER PER ASTM B 184 EYELET: COPPER PER ASTM B 152
- △ OBSOLETE PARTS: OBSOLETE CIS STREAMLINING PER D.RENAUD/D.SINISI

△ OBSOLETE	TYPE	MIN	MAX	TOLERANCE	FINISH	SPRING	PART NO
	OPEN	0.76	0.84	[.030-.033]	TIN △	GOLD △	7-5331677-4
	CLOSED	0.66	0.74	[.026-.029]			3-5331677-8
	KNOCKOUT	0.76	0.84	[.030-.033]			3-5331677-4
	OPEN	0.66	0.74	[.026-.029]			2-5331677-2
		0.76	0.84	[.030-.033]			2-5331677-2
	CLOSED	0.56	0.64	[.022-.025]		TIN △	1-5331677-8
		0.76	0.84	[.030-.033]			1-5331677-6
	BOTTOM TYPE	RECOMMENDED PIN DIA			EYELET	SPRING	

THIS DRAWING IS A CONTROLLED DOCUMENT.		OWN	J. FERNANDEZ-1002005	22APR2005
DRAWN BY		CHK	J. HAVENER	22APR2005
DIMENSIONS: mm [INCHES]		APPROVED	J. HAVENER	22APR2005
TOLERANCES UNLESS OTHERWISE SPECIFIED:		NAME	STE TE Connectivity	
0 P/LC	±	PRODUCT SPEC	MINIATURE SPRING SOCKET ASSEMBLY	
1 P/LC	±	APPLICATION SPEC	-	
2 P/LC	±	SIZE	A2	
3 P/LC	± 0.20 [0.008]	WEIGHT	114-13152	
4 P/LC	± *	SCALE	20:1	
MATERIAL	NOTE 7	CUSTOMER DRAWING	SIZE	00779
	SEE TABLE		DRAWING NO	5331677
			RESTRICTED TO	-
			SHEET	1 of 1
			REV	P