

4

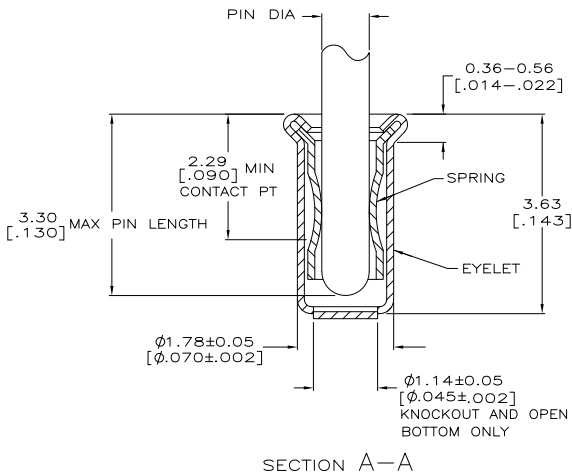
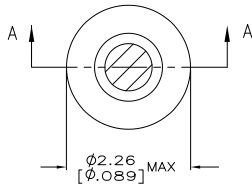
3

2

1

THIS DRAWING IS UNPUBLISHED. RELEASED FOR PUBLICATION. ALL RIGHTS RESERVED.

LOC	DIST	REVISIONS		
P	LTR	DESCRIPTION	DATE	BY
FT	64			
	A1	REVISED PER ECO-11-004835	11MAR11	RK HMR



SECTION A-A

- △ TIN PLATE PER ASTM B 545 0.00254 [.000100] MIN THICK.
- △ NICKEL UNDERPLATE ALL OVER, MATING SURFACE PLATED TO MEET PERFORMANCE REQUIREMENTS OF TE CONNECTIVITY PRODUCT SPECIFICATION 108-14008.
- 3. RECOMMENDED HOLE SIZE, PLATED OR UNPLATED:
 - MACHINE INSERTION: $1.83^{+0.10}_{-0.08}$ [$.072^{+0.004}_{-0.003}$]
 - HAND INSERTION: $1.83^{+0.10}_{-0.00}$ [$.072^{+0.004}_{-0.000}$]
- 4. APPLICATION TOOL PART NUMBER: MACHINE NO. 682127-5
INSERTION HEAD NO. 682039-4
- △ TO INSURE PROPER SPRING TENSION DO NOT EXCEED A 0.05 [.002] DIFFERENCE IN PIN DIA WHEN CHANGING TO A SMALLER PIN.
- 6. BOTTOM PLUG KNOCKOUT TOOL PART NUMBER 69729 WITH TIP PART NUMBER 69728-2.
- △ MATERIAL:
SPRING: BERYLLIUM COPPER PER ASTM B 194
EYELET: COPPER PER ASTM B 152

OBSOLETE

OPEN	0.71-0.84 [.028-.033]	TIN △	GOLD △	4-5332070-4
KNOCKOUT	0.94-1.02 [.037-.040]		TIN △	3-5332070-5
OPEN	0.94-1.02 [.037-.040]	TIN △	GOLD △	2-5332070-9
	0.86-0.94 [.034-.037]		TIN △	2-5332070-8
CLOSED	0.76-0.84 [.030-.033]	TIN △	GOLD △	2-5332070-6
	0.94-1.02 [.037-.040]		TIN △	2-5332070-5
BOTTOM TYPE	0.86-0.94 [.034-.037]	TIN △	GOLD △	2-5332070-3
	RECOMMENDED PIN DIA △		GOLD △	2-5332070-2
			SPRING △	2-5332070-1
			FINISH	PART NO

THIS DRAWING IS A CONTROLLED DOCUMENT.		BY: A. FERNANDEZ 23APR2005	TE Connectivity	
DIMENSIONS: INCHES		CHK: J. HAVENER 23APR2005	TE Connectivity	
TOLERANCES UNLESS OTHERWISE SPECIFIED:		APPC: J. HAVENER 23APR2005	MINIATURE SPRING SOCKET ASSEMBLY SERIES 4	
Ø F.L.C. ± .005		PRODUCT SPEC: 108-14008	SIZE: A2	CAGE CODE: 00779
Ø F.L.C. ± .005		APPLICATION SPEC: 114-13152	DRAWING NO: C=5332070	RESTRICTED TO: -
Ø F.L.C. ± .020 (0.008)		WEIGHT: -	SCALE: 20:1	SHEET: 1 of 1
MATERIAL: △		FINISH: SEE TABLE	CUSTOMER DRAWING	REV: A1

1471-9 (3/11)

5332070

B

A