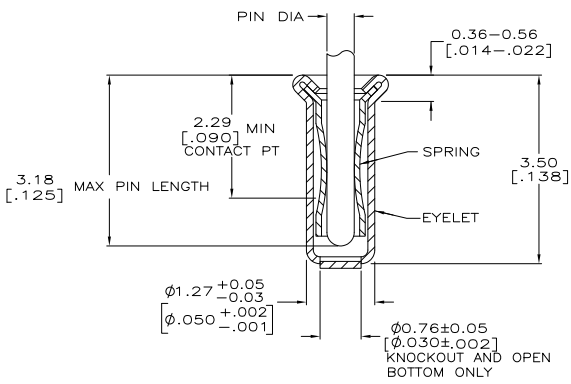
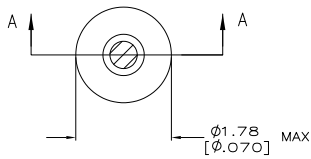


THE DRAWING IS UNPUBLISHED.
 © COPYRIGHT - By -
 RELEASED FOR PUBLICATION
 ALL RIGHTS RESERVED.

LUC		DST		REVISIONS			
FT	64	TR	LR	DESCRIPTION	DATE	DRN	APPD
		P		REVISED PER ECO-11-004835	11MAR11	RK	HMR



SECTION A-A

- △ TIN PLATE PER ASTM B 545 .000254 [.000100] MIN THICK.
- △ GOLD PLATE PER ASTM B 488 0.00076 [.000030] MIN THICK OVER NICKEL PLATE PER QQ-N-290 0.00028 [.000011] MIN THICK ON CONTACT AREA.
- 3. RECOMMENDED HOLE SIZE, PLATED OR UNPLATED:
 MACHINE INSERTION: 1.32±0.05 [.052±.002]
 HAND INSERTION: 1.32 +0.10 / -0.00 [.052 +.004 / -.000]
- 4. APPLICATION TOOL PART NUMBER:
 MACHINE NO. 682127-3
 INSERTION HEAD NO. 682039-2
- △ TO INSURE PROPER SPRING TENSION DO NOT EXCEED A 0.05 [.002] DIFFERENCE IN PIN DIA WHEN CHANGING TO A SMALLER PIN.
- 6. BOTTOM PLUG KNOCKOUT TOOL PART NUMBER 69729 WITH TIP PART NUMBER 69728.
- △ MATERIAL:
 SPRING: BERYLLIUM COPPER PER ASTM B 194
 EYELET: COPPER PER ASTM B 152
- △ OBSOLETE PARTS: OBSOLETE CIS STREAMLINING PER D.RENAUD/D.SINISI

OBSOLETE	OPEN	0.56-0.64 [.022-.025] 0.46-0.53 [.018-.021]	TIN △ 1	GOLD △ 2	4-5331272-3 3-5331272-9 3-5331272-5
	KNOCKOUT	0.56-0.64 [.022-.025] 0.46-0.53 [.018-.021]		TIN △ 1	3-5331272-3
	CLOSED			GOLD △ 2	2-5331272-7 2-5331272-5 2-5331272-3
	BOTTOM TYPE	RECOMMENDED PIN DIA △ 5		EYELET △ 5	SPRING △ 2
THIS DRAWING IS A CONTROLLED DOCUMENT.		DRN A FERNANDEZ-ROCKS 2049F2003	TE Connectivity		
DIMENSIONS: TO DIMENSIONS UNLESS OTHERWISE SPECIFIED:		APPD J. HAVENER 2049F2003	MINIATURE SPRING SOCKET ASSEMBLY SERIES 2		
MATERIAL △ 7		PRODUCT SPEC 108-14008	SIZE A2	CAGE CODE 00779	DRAWING NO C=5331272
FINISH SEE TABLE		WEIGHT -	CUSTOMER DRAWING		RESTRICTED TO -
		SCALE 20:1	SHEET 1 of 1		REV P