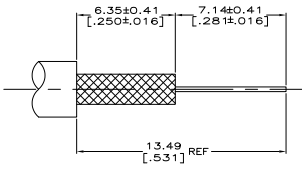
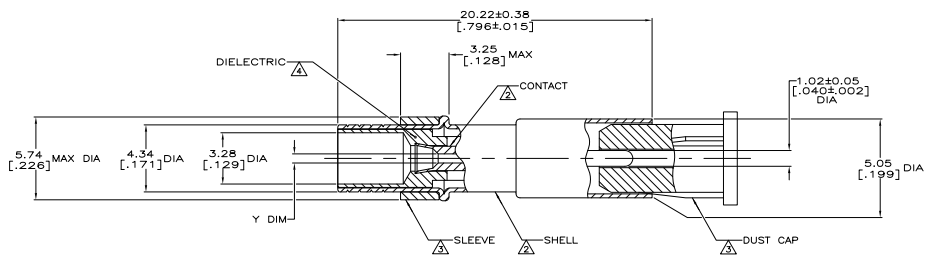


THIS DRAWING IS UNPUBLISHED
 ALL RIGHTS RESERVED

REV	DATE	DESCRIPTION	BY	CHK	APP
AJ	16				
BL1		REVISED PER EDD-11-005030		11MMR11	RK HMR

- SEE IS 1770
- BRASS PER QQ-B-626
- NYLON PER ASTM-D-4066, NATURAL
- POLYMETHYLPENTENE GENERAL PURPOSE
- .000030 MINIMUM GOLD PER MIL-G-45204
- .000100 MINIMUM GOLD PER MIL-G-45204



RECOMMENDED STRIP LENGTH

OBSELETE	CONTACT PLATING	SHELL PLATING	"Y" DIM	PART NUMBER
△	△	△	△	0.42±0.03
△	△	△	△	1-201146-0
△	△	△	△	0.42±0.03
△	△	△	△	201146-9
△	△	△	△	0.23±0.03
△	△	△	△	201146-8
△	△	△	△	0.42±0.03
△	△	△	△	201146-4
△	△	△	△	0.23±0.03
△	△	△	△	201146-2
△	△	△	△	0.42±0.03
△	△	△	△	201146-1

THIS DRAWING IS A CONTROLLED DOCUMENT.

UNLESS OTHERWISE SPECIFIED, DIMENSIONS ARE IN INCHES.

FINISHES: 1. POLISH 2. PLATE 3. ANNEAL 4. BURNISH 5. POLISH 6. PLATE 7. ANNEAL 8. BURNISH 9. POLISH 10. PLATE 11. ANNEAL 12. BURNISH

OPERATION SPEC: 1. POLISH 2. PLATE 3. ANNEAL 4. BURNISH 5. POLISH 6. PLATE 7. ANNEAL 8. BURNISH 9. POLISH 10. PLATE 11. ANNEAL 12. BURNISH

DATE: 10/07/99 DRAWING NO: 201146

CUSTOMER DRAWING

SIZE: 8.1 1 1

TE Connectivity SOCKET, MINATURE SERIES