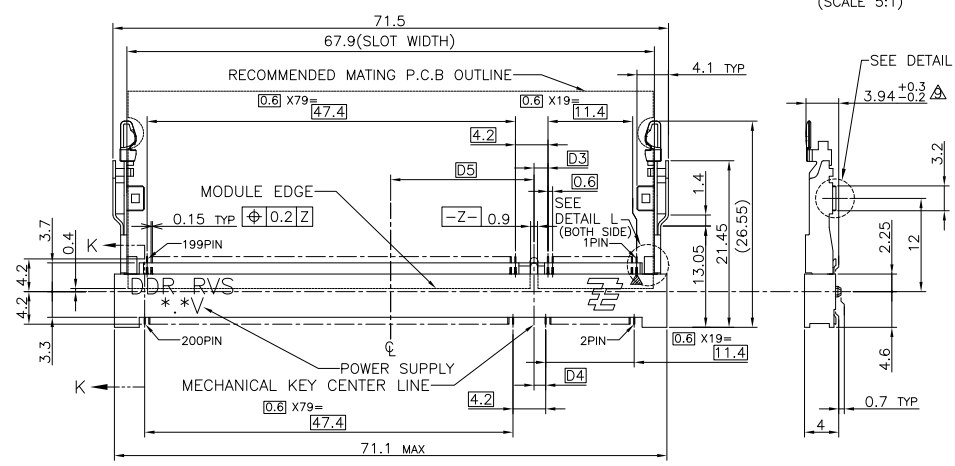
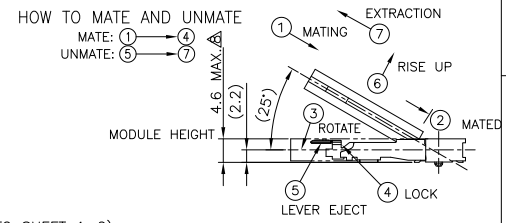
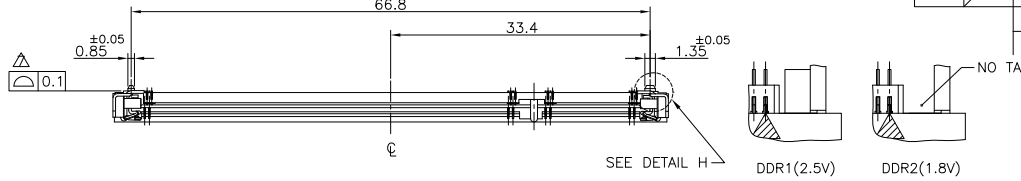
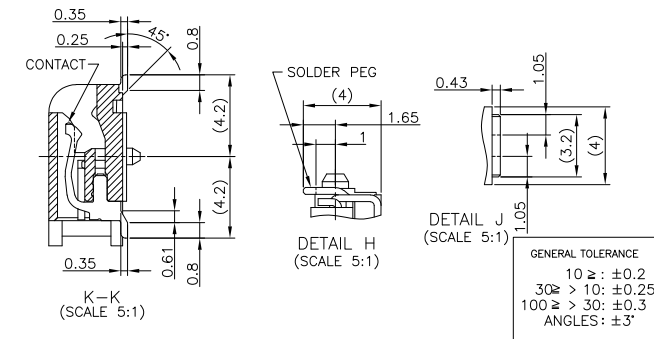


THIS DRAWING IS UNPUBLISHED. RELEASED FOR PUBLICATION SEP. 2003. ALL RIGHTS RESERVED. COPYRIGHT 2003 BY -

LOC	DIST	REVISIONS			
P	LTR	DESCRIPTION	DATE	DWN	APVD
E2		REVISED PER ECO-11-005033	28MAR11	RK	HMR



(APPLIED TO SHEET 1-2)  
 1. MATERIAL ; HOUSING: HIGH TEMPERATURE THERMO PLASTIC UL94V-0  
 CONTACT: COPPER ARROY  
 LOCK LEVER: STAINLESS STEEL  
 SOLDER PEG: COPPER ARROY  
 2. FINISH ; CONTACT AREA: GOLD FLASH ON 0.0013MIN ALL OVER NICKEL.  
 SOLDERING AREA: GOLD FLASH PLT.  
 SOLDER PEG: TIN PLATING.  
 MECHANICAL KEY POSITION OF CONNECTOR SEE TABLE.  
 TOLERANCES NON-CUMULATIVE.  
 NOT TO SCALE.  
 INSIDE MUST BE RESIST COAT EXCEPT SOLDER PATTERN.  
 COPLANARITY : 0.1 MAX.  
 THE FLOATING VALUE BY SOLDERING IS NOT INCLUDED.  
 NOT MATING CONDITION.  
 IF THE MODULE DOESN'T INSERT AND LOCK IN THE LATCH SMOOTHLY,  
 OPEN WIDE BOTH LATCHES BY MANUAL. AND THE MODULE MUST BE  
 INSERTED AND LOCKED IN THE LATCH.



AVAILABLE	—H—	1.8V (DDR2)	17.55	2.4	2.7	200	1-1717833-4
AVAILABLE	—H—	1.8V (DDR2)	17.55	2.4	2.7	200	1717833-4
AVAILABLE	—H—	2.5V (DDR1)	18.45	1.5	1.8	200	1717833-1
TOOLING STATUS	REMARK	POWE SUPPLY (TYPE)	D5	D4	D3	POS	PART NO.

THIS DRAWING IS A CONTROLLED DOCUMENT.		DWN B.WONG 20JUL10	TE Connectivity DDR1 & DDR2 SODIMM SOCKET 0.6mm PITCH 200POS LOW PROFILE REVERSE TYPE (LATCH DIRECT SOLDERING TYPE)
DIMENSIONS: MM		CHK C.WANG 20JUL10	
TOLERANCES UNLESS OTHERWISE SPECIFIED:		APVD S.YAO 20JUL10	
0 PLC ± 1 PLC ± 2 PLC ± 3 PLC ± 4 PLC ± ANGLES ±		NAME	
GENERAL TOLERANCE		PRODUCT SPEC	SIZE
10 ≥ : ±0.2 30 ≥ > 10: ±0.25 100 ≥ > 30: ±0.3 ANGLES : ±3°		APPLICATION SPEC	CAGE CODE
MATERIAL		WEIGHT	DRAWING NO
FINISH		3.2g	00779
		CUSTOMER DRAWING	DRAWING NO
			1717833
		SCALE	RESTRICTED TO
		2:1	E2
		SHEET	
		1 of 4	
		REV	



4

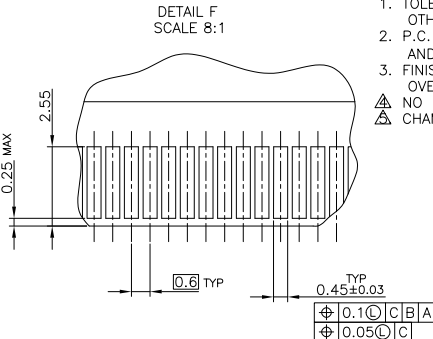
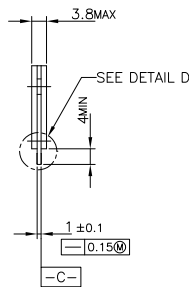
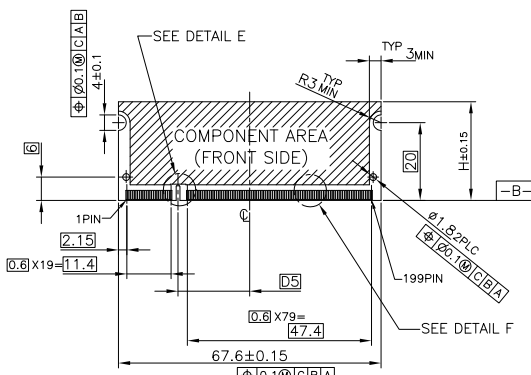
3

2

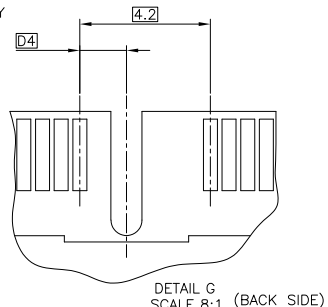
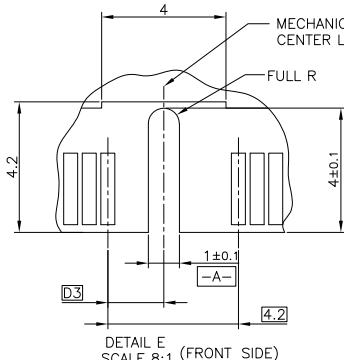
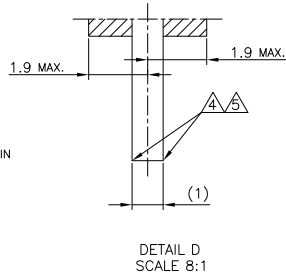
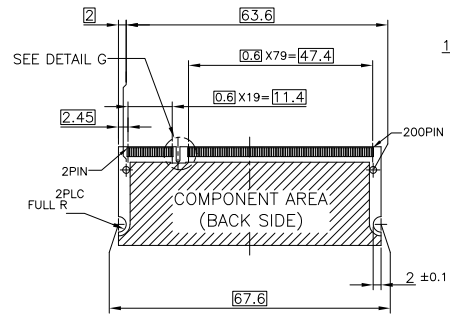
1

THIS DRAWING IS UNPUBLISHED. RELEASED FOR PUBLICATION SEP. 2003.  
 ALL RIGHTS RESERVED. COPYRIGHT 2003 By -

LOC	DIST	REVISIONS				
P	LTR	DESCRIPTION	DATE	DWN	APVD	
-	-	SEE SHEET 1	-	-	-	



- (APPLIED TO SHEET 3)
- TOLERANCES ON ALL DIMENSIONS ±0.15 UNLESS OTHERWISE SPECIFIED.
  - P.C. BOARD THICKNESS APPLIES ACROSS TABS AND INCLUDES PLATING AND/OR METALIZATION.
  - FINISH OF PAD : GOLD PLATING 0.00076 MIN. OVER Ni PLATING 0.002MIN.
- NO BURR  
 CHAMFER 0.25 MAX x 45° IF EXIST.



推奨基板仕様  
 RECOMMENDED MATING P.C.B CONFIGURATION

31.75	1.8V	17.55	2.4	2.7
25.4	2.5V	18.45	1.5	1.8
H	POWER SUPPLY	D5	D4	D3

THIS DRAWING IS A CONTROLLED DOCUMENT.

DIMENSIONS: MM	TOLERANCES UNLESS OTHERWISE SPECIFIED:	DWN	CHK	APVD	NAME
0 PLC ±	1 PLC ±				TE Connectivity
2 PLC ±	3 PLC ±				DDR1 & DDR2 SODIMM SOCKET 0.6mm PITCH
4 PLC ±	ANGLES ±				200POS LOW PROFILE REVERSE TYPE (LATCH DIRECT SOLDERING TYPE)
MATERIAL	FINISH	PRODUCT SPEC	APPLICATION SPEC	WEIGHT	SIZE
					A3
					CAGE CODE
					00779
					DRAWING NO
					1717833
					RESTRICTED TO
					CUSTOMER DRAWING
					SCALE
					2:1
					SHEET
					3 of 4
					REV
					E2

4

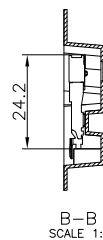
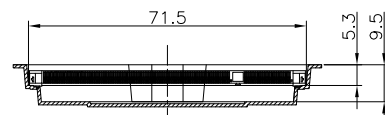
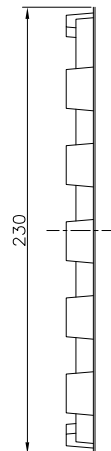
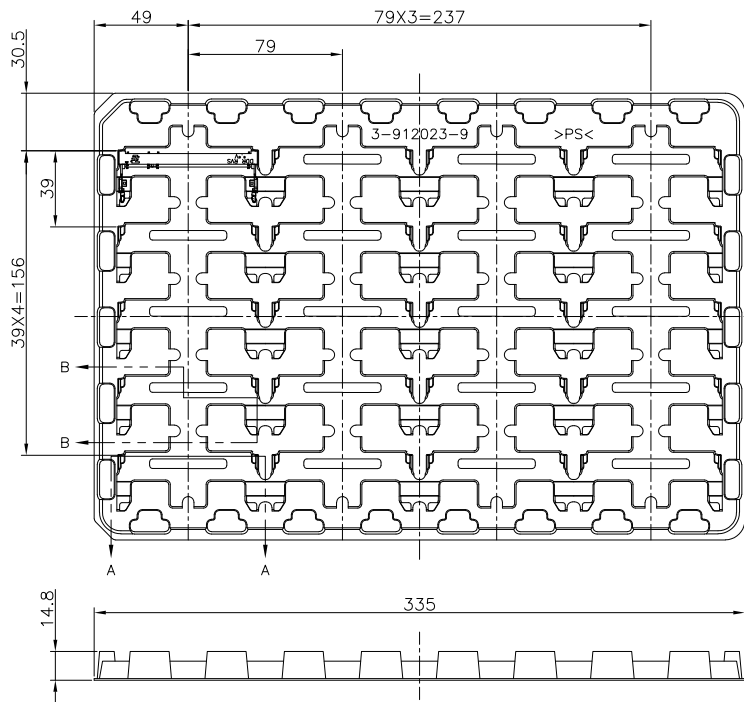
3

2

1

THIS DRAWING IS UNPUBLISHED. RELEASED FOR PUBLICATION SEP. 2003.  
 © COPYRIGHT 2003 By - ALL RIGHTS RESERVED.

LOC	DIST	REVISIONS				
P	LTR	DESCRIPTION	DATE	DWN	APVD	
-	-	SEE SHEET 1	-	-	-	



1. THE DIRECTION OF EACH CONNECTOR ON A TRAY IS REFERRED TO THIS DRAWING.
2. GENERAL TOLERANCE : ±0.5

20EA/TRAY	1-1717833-4
20EA/TRAY	1717833-4
20EA/TRAY	1717833-1
QTY	P/N

THIS DRAWING IS A CONTROLLED DOCUMENT.		DWN	<b>TE</b> TE Connectivity	
DIMENSIONS: MM		CHK		
TOLERANCES UNLESS OTHERWISE SPECIFIED:		APVD	NAME	
0 PLC	±	PRODUCT SPEC	DDR1 & DDR2 SODIMM SOCKET 0.6mm PITCH	
1 PLC	±	APPLICATION SPEC	200POS LOW PROFILE REVERSE TYPE	
2 PLC	±	WEIGHT	(LATCH DIRECT SOLDERING TYPE)	
3 PLC	±	SIZE	A3	RESTRICTED TO
4 PLC	±	CAGE CODE	00779	
ANGLES	±	DRAWING NO	C-1717833	
MATERIAL	FINISH	CUSTOMER DRAWING	SCALE	1:2
			SHEET	4 of 4
			REV	E2