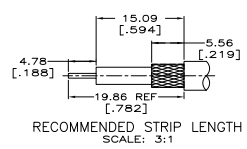
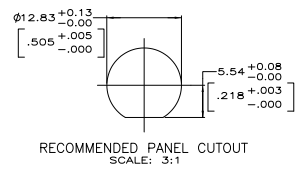
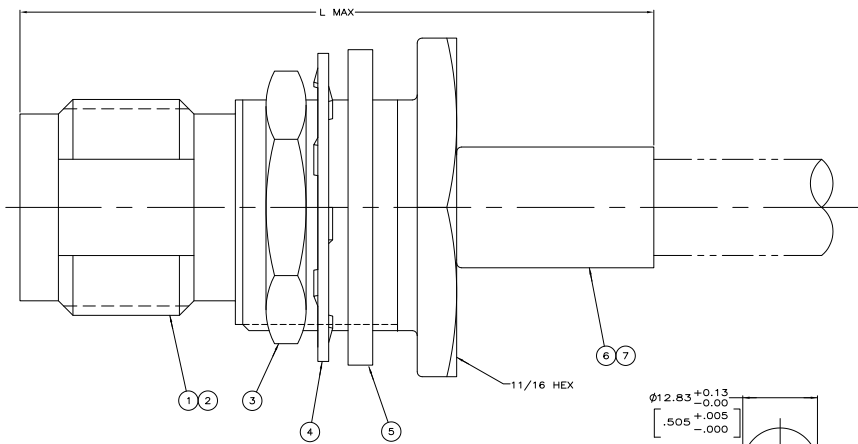


THIS DRAWING IS UNPUBLISHED  
 ALL RIGHTS RESERVED  
 © 2008 BY THE ELECTRONICS CORPORATION

REV	DATE	DESCRIPTION	BY	CHK	APP
0		REV PER EC-0514-0496-04	GA	JL	
01		REVISED PER EC-09-024927	10NOV09	KK	AEG

- △ USE HAND TOOL: 354940-1
- 2. MAXIMUM PANEL THICKNESS: 6.10 [.240]
- 3. SEE I.S. 9051
- △ OBSOLETE PARTS: OBSOLETE CIS STREAMLINING PER D.RENAUD/D.SINISI



FOR USE WITH CABLE	L	DIE SET	7	BUSHING	6	FERRULE	5	GASKET	4	LOCKWASHER	3	JAM NUT	2	CONTACT	1	JACK ASSEMBLY	PART NUMBER
RG-55/U, 55A/U, 55B/U, 223/U	34.93	1.375	220189-1	-	9-329099-0	329633	1-329632-2	1-329631-2	221149-6	414169-1	5414168-8						
RG-142/U, 142A/U, 142B/U, 400/U	34.93	1.375	220189-1	-	9-225352-0	329633	1-329632-2	1-329631-2	2-221149-6	414169-1	5414168-5						
RG-188/U, 316/U TYPE DOUBLE BRAID	34.93	1.375	58330-1	21427-4	9-329049-0	329633	1-329632-2	1-329631-2	2-221149-0	414169-3	5414168-4						
RG-174/U, 188/U, 316/U	34.93	1.375	220210-1	21427-4	9-328666-0	329633	1-329632-2	1-329631-2	2-221149-0	414169-3	5414168-3						
RG-58/U, 58A/U, 58B/U, 58C/U, 141/U, 141A/U	34.93	1.375	220189-1	-	9-50427-1	329633	1-329632-2	1-329631-2	221149-6	414169-1	5414168-1						

THIS DRAWING IS A CONTROLLED DOCUMENT.

DESIGNER	DATE	REVISED	DATE
BY	108-12047	BY	
CHECKED		CHECKED	
APPROVED		APPROVED	

ATTACH: \_\_\_\_\_  
 APPROVED: \_\_\_\_\_  
 DATE: \_\_\_\_\_  
 CUSTOMER DRAWING: A100779 Q=5414168  
 SIZE: 10.1 INCHES  
 SHEET: 1 OF 1